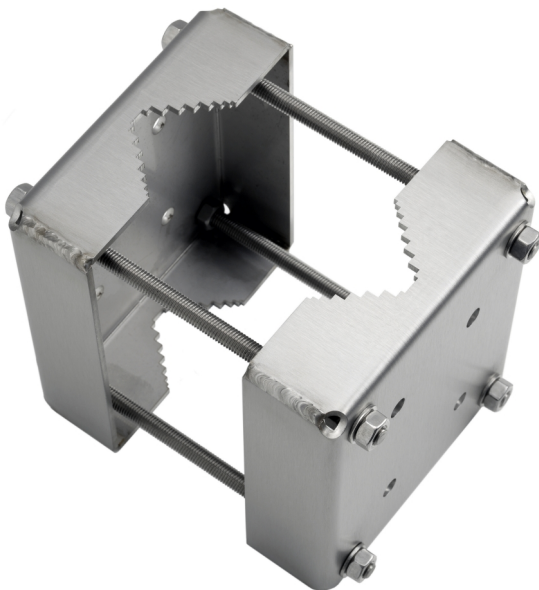


Pole Mount ExCam XF

For explosion-protected fixed network cameras

Pole Mount ExCam XF is designed for ExCam XF explosion-protected fixed network cameras. Together with the required Wall Mount ExCam XF, it allows the camera to be mounted on poles. Pole Mount ExCam XF is suitable for pole diameters between 50 to 105 mm (2.0 to 4.1 in). It is ideal for onshore, offshore, marine, and heavy industrial applications.

- > **Made of stainless steel EN 1.4404 (ASTM 316L)**
- > **For pole diameters from 50 to 105 mm (2.0 to 4.1 in)**
- > **Resistant to corrosion**
- > **Sturdy and safe**
- > **Compatible with ExCam XF cameras**



Pole Mount ExCam XF

General		Included accessories	Mounting material
Supported products	Wall Mount ExCam XF	Required accessories	Wall Mount ExCam XF
Pole diameter	50–105 mm (2.0–4.1 in)	Optional accessories	For more accessories, see axis.com
Maximum load	200 kg (441 lb)	Warranty	Axis 3-year warranty, see axis.com/warranty
Casing	Stainless steel, EN 1.4404 (ASTM 316L)	Environmental responsibility: www.axis.com/environmental-responsibility	
Dimensions	180 x 160 x 210 mm (7.1 x 6.3 x 8.3 in)		
Weight	3.8 kg (8.4 lb)		