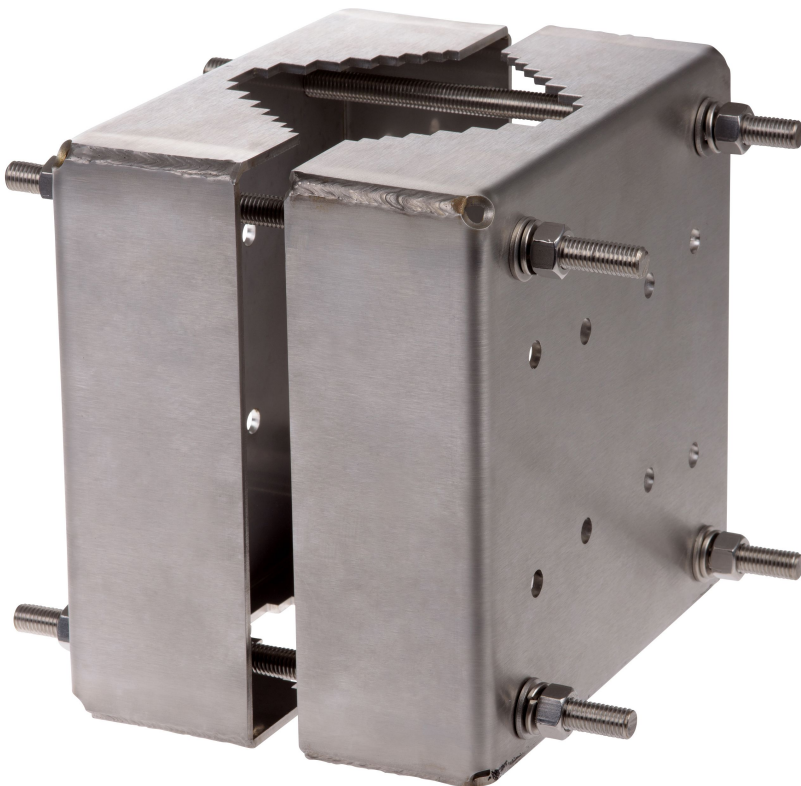


Pole Mount ExCam XPT

Pole mount for explosion-protected PTZ network cameras

Pole Mount ExCam XPT is made of stainless steel and designed for ExCam XPT Q6055 Explosion-Protected PTZ Network Camera. Together with the required Wall Mount ExCam XPT, it allows the camera to be mounted on poles. Pole Mount ExCam XPT is suitable for pole diameters between 110 to 150 mm (4.3 to 5.9 in). The pole mount is ideal for onshore, offshore, marine, and heavy industrial applications.

- > **Made of stainless steel EN 1.4404 (ASTM 316L)**
- > **For pole diameters from 110 to 150 mm (4.3 to 5.9 in)**
- > **Resistant to corrosion**
- > **Sturdy and safe**
- > **Compatible with ExCam XPT Q6055**



Pole Mount ExCam XPT

| General | |
|--------------------|---|
| Supported products | ExCam XPT Q6055 Explosion-Protected PTZ Network Camera |
| Material | Stainless steel EN 1.4404 (ASTM 316L) |
| Maximum load | 50 kg (110 lb) |
| Dimensions | 228 x 376 x 155 mm (9 x 14 13/16 x 6 1/8 in) without pole |
| Weight | 3.5 kg (7.7 lb) |

| | |
|----------------------|--|
| Required accessories | Wall Mount ExCam XPT |
| Optional accessories | For more accessories, see axis.com |
| Warranty | Axis 3-year warranty, see axis.com/warranty |

Environmental responsibility:
www.axis.com/environmental-responsibility