

ZD220/ZD230

What is Included:



Printer
Impresora
Imprimante



Power Supply
Fuente de alimentación eléctrica
Bloc d'alimentation



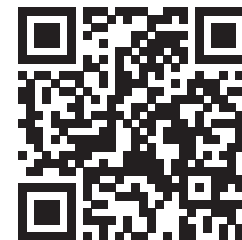
USB Cable
Cable USB
Câble USB

Not Included:



Labels
Etiquetas
Étiquettes

Genuine Zebra Supplies
Suministros Zebra genuinos
Consommables de marque Zebra
www.zebra.com/supplies



Scan for Help



www.zebra.com/zd200d-info



ZEBRA

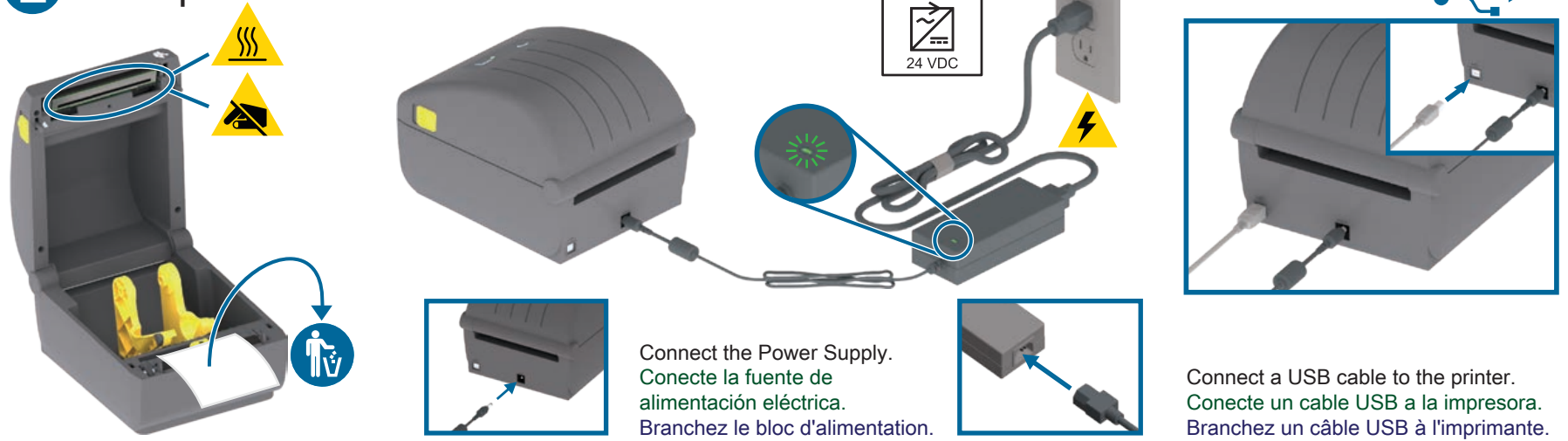
1 Install
Software

www.zebra.com/setup



Download and Install Zebra Setup Utilities
Includes Windows Printer Driver Files
Descargue e instale Zebra Setup Utilities (Utilidades de configuración de Zebra)
Incluye archivos del controlador de la impresora de Windows
Téléchargez et installez Zebra Setup Utilities.
Fichiers des pilotes d'impression Windows inclus.

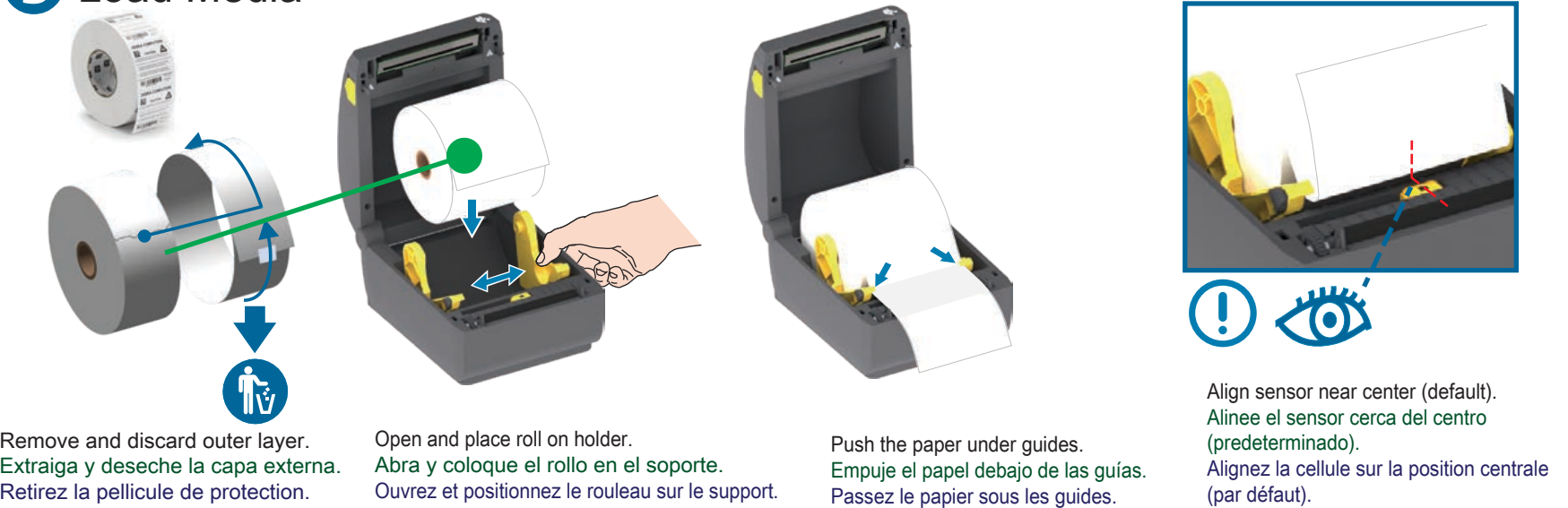
2 Set Up Your Printer



Connect the Power Supply.
Conecte la fuente de alimentación eléctrica.
Branchez le bloc d'alimentation.

Connect a USB cable to the printer.
Conecte un cable USB a la impresora.
Branchez un câble USB à l'imprimante.

3 Load Media



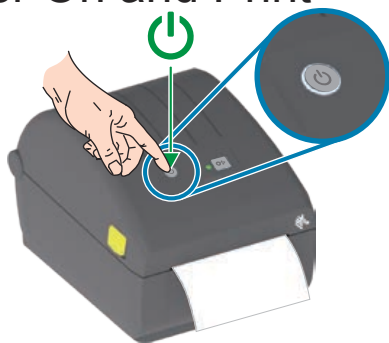
Remove and discard outer layer.
Extraiga y deseche la capa externa.
Retirez la pellicule de protection.

Open and place roll on holder.
Abra y coloque el rollo en el soporte.
Ouvrez et positionnez le rouleau sur le support.

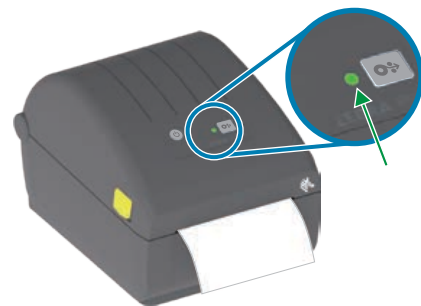
Push the paper under guides.
Empuje el papel debajo de las guías.
Passez le papier sous les guides.

Align sensor near center (default).
Alinee el sensor cerca del centro (predeterminado).
Alignez la cellule sur la position centrale (par défaut).

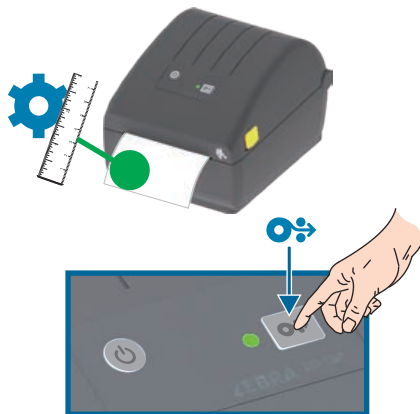
4 Power On and Print



Press and release Power Button. Lights will cycle.
Presione y libere el botón de encendido. Las luces se prenderán y apagarán.
Appuyez sur le bouton marche/arrêt, puis relâchez-le. Les voyants s'initialisent.



Printer Ready when Status Light is steady Green.
La impresora estará lista cuando la luz de estado se mantenga en verde fijo.
L'imprimante est prête lorsque le voyant d'état reste vert.



Perform Media Calibration:

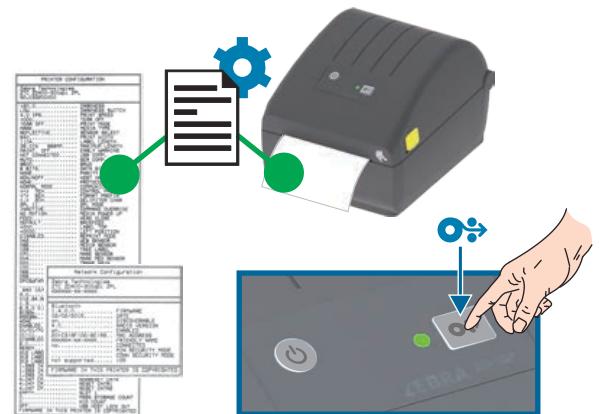
Press and hold the FEED button until the Status Light blinks off and on TWICE, then release.

Realice la calibración del papel:

Mantenga presionado el botón ALIMENTACIÓN hasta que la luz de estado se apague y se prenda DOS VECES y luego libérela.

Calibrez le papier :

Appuyez sur le bouton AVANCE et maintenez-le enfoncé jusqu'à ce que le voyant d'état clignote DEUX FOIS, puis relâchez-le.



Test Print Configuration Report:

Press and hold the FEED button until the Status Light blinks off and on ONCE, then release.

Informe de configuración de la impresión de prueba:

Mantenga presionado el botón ALIMENTACIÓN hasta que la luz de estado se apague y se prenda UNA VEZ, luego libérela.

Rapport de configuration du test d'impression :

Appuyez sur le bouton AVANCE et maintenez-le enfoncé jusqu'à ce que le voyant d'état clignote UNE FOIS, puis relâchez-le.

5



Register / Regístrate / S'enregistrer

www.zebra.com/register



This is a Zebra QuickHelp QR Code

Este es un código QR de Zebra QuickHelp

Voici un code QR permettant d'accéder à une page d'aide rapide Zebra

You will find them on your Zebra product and documentation. Open the camera app on your smart mobile device and point it at the QR code to view helpful content in a browser.

Los encontrará en su producto y documentación de Zebra. Abra la aplicación de cámara en su dispositivo móvil inteligente y apúntelo al código QR para ver contenido útil en un navegador.

Vous en trouverez un sur la documentation et sur votre produit Zebra. Pour afficher le contenu de l'aide dans un navigateur, activez la caméra de votre appareil mobile et visez le code QR.

Get Help: Obtenga ayuda: www.zebra.com/zd200d-info Obtenir de l'aide:

The screenshot shows the Zebra support website interface. At the top, there are navigation tabs: How-To Videos, Drivers, Firmware, Software, Developer Tools, Manuals, and Knowledge Articles. Below the tabs, the 'HOW-TO VIDEOS' section features three video thumbnails: 'Unpacking your printer', 'Identifying the features of your printer', and 'Getting Started'. The 'DRIVERS' section includes a 'RECOMMENDED' driver: 'ZebraDesigner driver 32/64 bit. Certified for Windows. Version 5.1' with a 'Download 27 MB' button. Below that, it lists 'OPERATING SYSTEM' compatibility: Windows 10, Windows 7, Windows Server 2016, Windows 8.1, Windows Server 2012, Windows 2008, Windows Vista. The 'MANUALS' section shows a dropdown menu for 'English (United States)' and two manual entries: 'ZD620 and ZD420 Users Guide (en)' (212485-003) with a 'Download 22 MB' button, and 'Wired/Wireless Print Servers User Guide (en)' (P1043301.006) with a 'Download 2 MB' button. The 'KNOWLEDGE ARTICLES' section lists 'Types of Printer Profile Manager Enterprise (PPME) Licenses Available' and 'Zebra Setup Utilities (ZSU) Download', with a 'Search All Articles' button. At the bottom, there are two sections: 'ZEBRA ONECARE' with a cloud icon and text about productivity, and 'REQUEST A REPAIR' with an icon of two people and text about repair services.



NA and Corporate Headquarters
+1 800 423 0442
inquiry4@zebra.com

Asia-Pacific Headquarters
+65 6858 0722
contact.apac@zebra.com

EMEA Headquarters
zebra.com/locations
contact.emea@zebra.com

Latin America Headquarters
+1 847 955 2283
la.contactme@zebra.com

Printed In China



www.zebra.com/locations

Zebra and the stylized Zebra head are trademarks of Zebra Technologies Corporation, registered in many jurisdictions worldwide. All other trademarks are the property of their respective owners. ©2019 Zebra Technologies Corporation and/or its affiliates. All rights reserved.



212096-101