



FS-1100

FS-1300D

PF-100

PARTS LIST

Published in February 2008

2HSPL071

Revision 1

NOTES

1. Indicate parts number and parts description together with the machine model name when placing an order.

e.g.	Parts Number	Parts Name	Machine Model	Quantity
	302H508011	BASE BYPASS	FS-1100	1
	302HS08050	BASE MPF	FS-1300D	1

2. Symbols in the "Parts Number" column.

- Parts with "•" are component parts or sub-assemblies of the assembly appearing immediately above them.

e.g.	Parts Number	Parts Name	Parts Number	Parts Name
	302HS93081	CT-130	•302F909031	LEVER BASE CAS REAR
			•302F909040	SPRING BASE CAS REAR

- Parts with "••" are component parts or sub-assembly with "•" appearing immediately above them.

e.g.	Parts Number	Parts Name	Parts Number	Parts Name
	•302HS94000	PLATE BOTTOM ASSY	••302F909210	PAD BOTTOM
			••302HS09110	PLATE BOTTOM

- Parts with "⊙" indicate regular maintenance parts.

———— CONTENTS ————

FIG. 1	Covers.....	2
FIG. 2	Frames (Simplex model).....	4
FIG. 2	Frames (Duplex model).....	6
FIG. 3	Paper Cassette	8
FIG. 4	Paper Feed Section 1	10
FIG. 5	Paper Feed Section 2 (Simplex model)	12
FIG. 5	Paper Feed Section 2 (Duplex model)	14
FIG. 6	Image Formation Section	16
FIG. 7	Developing Section	18
FIG. 8	Fuser Section	20
FIG. 9	Drive Section (Simplex model).....	22
FIG. 9	Drive Section (Duplex model)	24
FIG. 10	Duplex Section (Duplex model).....	26
FIG. 11	Electrical Components	28
FIG. 12	Parts Package.....	30
	• INDEX	31

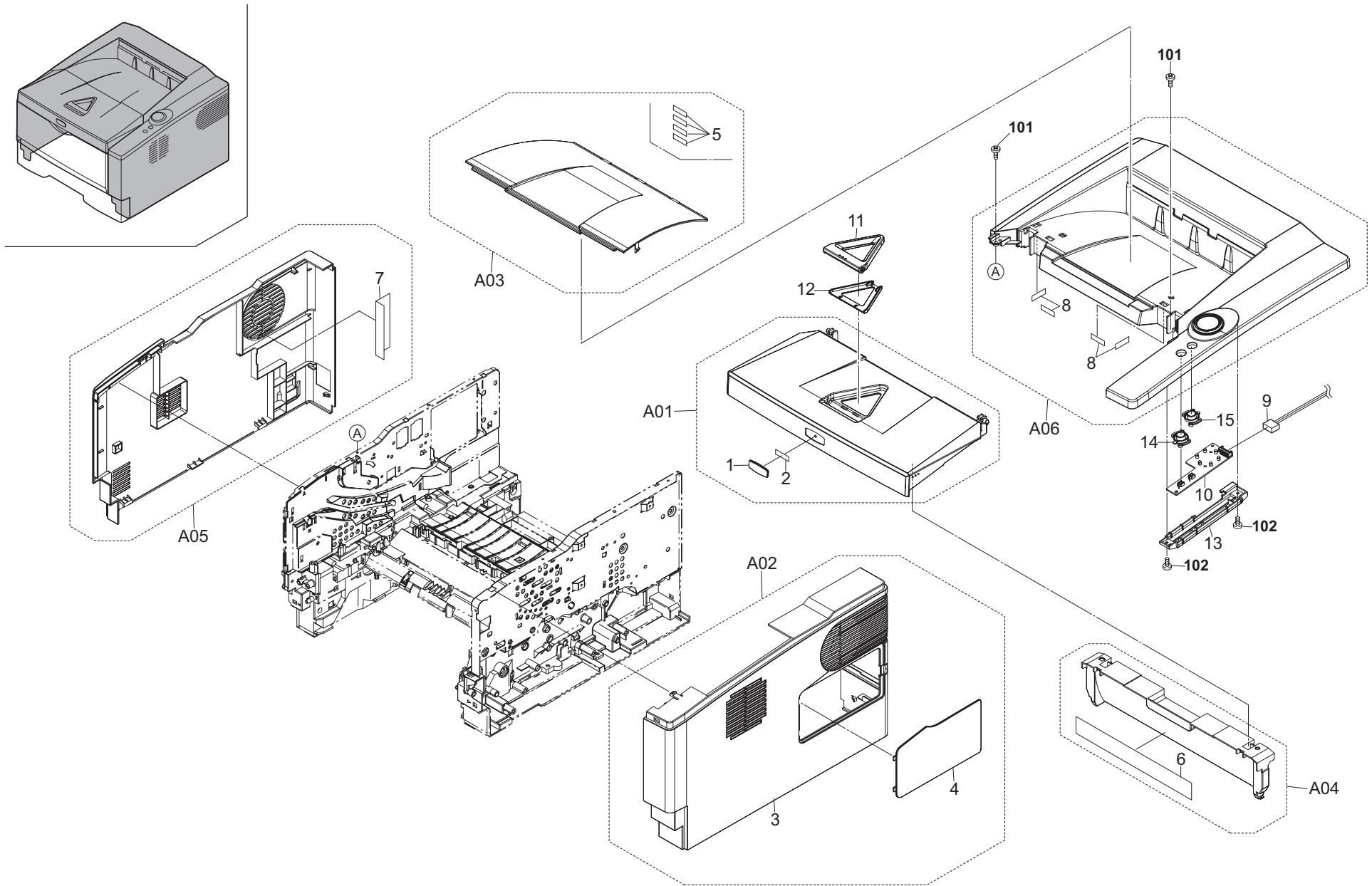


FIG. 1 Covers

2H5/2HS-1

Ref. No.	Part.No.	Alternative.	Description	Quantity			
				110	120	230	240
⊙ A01	302HS94020	2HS94020	LID TOP ASSY	1	1	1	1
1	*302F904120	2F904120	EMBLEM KYOCERA	1	1	1	1
2	*302F904130	2F904130	TAPE EMBLEM	1	1	1	1
⊙ A02	302HS00030	2HS00030	COVER RIGHT ASSY (Duplex model)	1	1	1	1
⊙ A02	302HS00010	2HS00010	COVER RIGHT ASSY (Simplex model)	1	1	1	1
3	*302HS04040	2HS04040	COVER RIGHT (Duplex model)	1	1	1	1
3	*302HS04010	2HS04010	COVER RIGHT (Simplex model)	1	1	1	1
4	*302HS04060	2HS04060	COVER DIMM	1	1	1	1
⊙ A03	302HS94140	2HS94140	COVER TOP B KIT SP	1	1	1	1
5	*302HS04170	2HS04170	SHEET TOP COVER	4	4	4	4
⊙ A04	302HS94120	2HS94120	COVER FRONT ASSY (2HS) SP (Duplex model)	1	1	1	1
⊙ A04	302HS94020	2HS94020	COVER FRONT ASSY (2H5) SP (Simplex model)	1	1	1	1
6	*302HS534070	2HS534070	LABEL JAM OPERATION (Simplex model)	1	1	1	1
6	*302HS34080	2HS34080	LABEL JAM TK OPERATION (Duplex model)	1	1	1	1
⊙ A05	302HS94241	2HS94241	COVER LEFT ASSY SP	1	1	1	1
7	*302HS02660	2HS02660	SHEET FAN L	1	1	1	1
⊙ A06	302HS94010	2HS94010	COVER TOP ASSY	1	1	1	1
⊙ A06	302HS94250	2HS94250	COVER TOP ASSY SP (KMTW)	1	1	1	1
8	*302HS04170	2HS04170	SHEET TOP COVER	4	4	4	4
9	302HS46230	2HS46230	CONN.CORD ASSY PANEL-RELAY S03353	1	1	1	1
⊙ 10	302HS01030	2HS01030	P.W.B BOARD ASSY PANEL	1	1	1	1
⊙ 11	302HS04070	2HS04070	COVER RACK	1	1	1	1
⊙ 12	302HS04160	2HS04160	COVER RACK B	1	1	1	1
13	302HS04080	2HS04080	COVER PANEL	1	1	1	1
14	302HS04100	2HS04100	BUTTON ENTER	1	1	1	1
15	302HS04110	2HS04110	BUTTON CANCEL	1	1	1	1

Ref. No.	Part.No.	Alternative.	Description	Quantity			
				110	120	230	240
101	5MBTPB4010PW++R	B1A64100	BIND T.T SCREW(+)/ M4 X 10 CRFREE P-T				
102	5MBTPB3008PW++R	B1A63080	BIND T.T SCREW(+)/ M3 X 8 CRFREE P-T				

- Parts with "*" are component parts or sub-assemblies of the assembly appearing immediately above them.
- Parts with "⊙" indicate regular maintenance parts.

- Parts with "••" are component parts or sub-assembly with "•" appearing immediately above them.

FIG. 2 Frames (Simplex model)

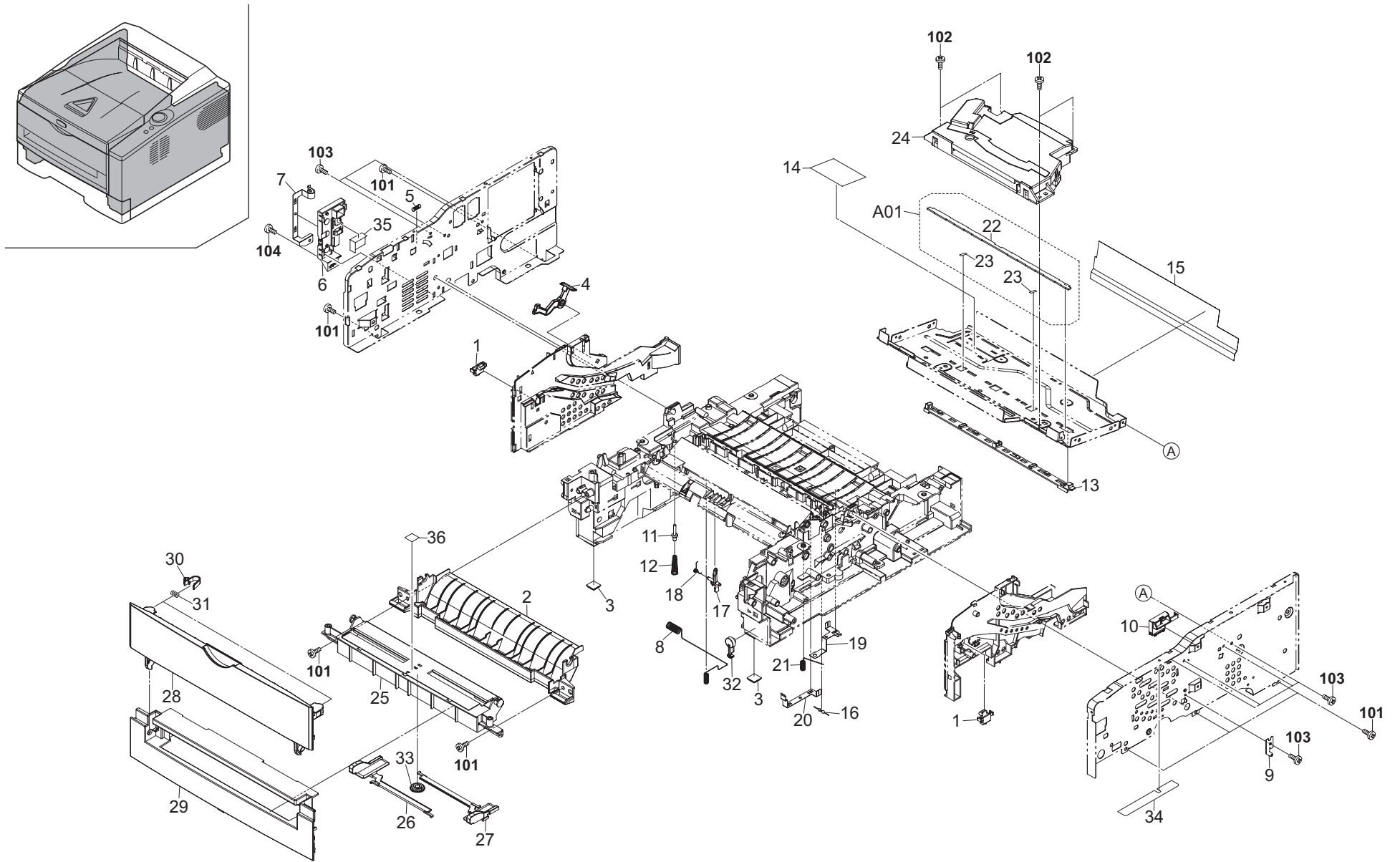


FIG. 2 Frames (Simplex model)

2H5/2HS-1

Ref. No.	Part.No.	Alternative.	Description	Quantity			
				110	120	230	240
1	302F902420	2F902420	LOCK COVER TOP R	2	2	2	2
2	302HS08040	2HS08040	GUIDE TURN MPF	1	1	1	1
3	5MVX221RB014	2BS03110	FOOT /43307C0007 A4	2	2	2	2
4	302HS02090	2HS02090	LEVER STOPPER DLP	1	1	1	1
5	302HS02100	2HS02100	SPRING STOPPER DLP	1	1	1	1
6	302HS02130	2HS02130	HOLDER MC	1	1	1	1
7	302HS02140	2HS02140	PLATE CONTACT MC	1	1	1	1
8	302HS02160	2HS02160	SPRING MC	1	1	1	1
9	302HS02291	2HS02291	PLATE EARTH DRUM	1	1	1	1
10	302HS02350	2HS02350	COVER CABLE B	1	1	1	1
11	302HS02460	2HS02460	PIN CONTACT BIAS	1	1	1	1
12	302HS02470	2HS02470	SPRING PIN BIAS	1	1	1	1
13	302HS02500	2HS02500	HOLDER ERASER	1	1	1	1
14	302HS02580	2HS02580	SHEET DUCT LSU	1	1	1	1
15	302HS02590	2HS02590	SHEET DUCT FD	1	1	1	1
16	7RHA2H10701+H01	RH043740	M.GLAZE R. 100MJ 1/2W	1	1	1	1
17	302HS24060	2HS24060	ACTUATOR REGIST	1	1	1	1
18	302HS24070	2HS24070	SPRING ACTUATOR REG	1	1	1	1
19	302HS24080	2HS24080	PLATE EARTH HV	1	1	1	1
20	302HS24110	2HS24110	PLATE ERATH PAPER CHUTE	1	1	1	1
21	302HS24300	2HS24300	SPRING CONTACT TC	1	1	1	1
A01	302HS94110	2HS94110	ERASER KIT	1	1	1	1
22	*302HS01050	2HS01050	P.W.BOARD ASSY /ERASER	1	1	1	1
23	*302HS02630	2HS02630	TAPE ERASER	2	2	2	2
24	302HS93090	2HS93090	LK-130	1	1	1	1
25	302H508011	2H508011	BASE BYPASS	1	1	1	1
26	302H508020	2H508020	GUIDE BYPASS L	1	1	1	1
27	302H508030	2H508030	GUIDE BYPASS R	1	1	1	1
28	302H508040	2H508040	COVER BYPASS UP	1	1	1	1
29	302H508051	2H508051	COVER BYPASS LOW	1	1	1	1
30	302F908200	2F908200	LOCK COVER	2	2	2	2
31	302HS08320	2HS08320	SPRING COVER MPF	2	2	2	2
32	302HS02650	2HS02650	HOOK PF	1	1	1	1
33	5MVG137DN032	2A806720	GEAR MPF /A-49 MPF A4	1	1	1	1
34	302HS02670	2HS02670	SHEET FAN R	1	1	1	1
35	302HS02680	2HS02680	SHEET MC CABLE	1	1	1	1
36	302H534100	2H534100	LABEL MANUAL FEED	1	1	1	1

Ref. No.	Part.No.	Alternative.	Description	Quantity			
				110	120	230	240
101	5MBTPB4010PW++R	B1A64100	BIND T.T SCREW(+)/ M4 X 10 CRFREE P-T				
102	7BB600308H	BB055190	+BIND SCREW M3X8 CRFREE SR				
103	5MBTPB3006TW++R	B1A53060	BIND T.T SCREW(+)/ M3 X 6 CRFREE S-T				
104	5MBTPB3008PW++R	B1A63080	BIND T.T SCREW(+)/ M3 X 8 CRFREE P-T				

- Parts with "*" are component parts or sub-assemblies of the assembly appearing immediately above them.
- Parts with "⊙" indicate regular maintenance parts.

- Parts with "••" are component parts or sub-assembly with "•" appearing immediately above them.

FIG. 2 Frames (Duplex model)

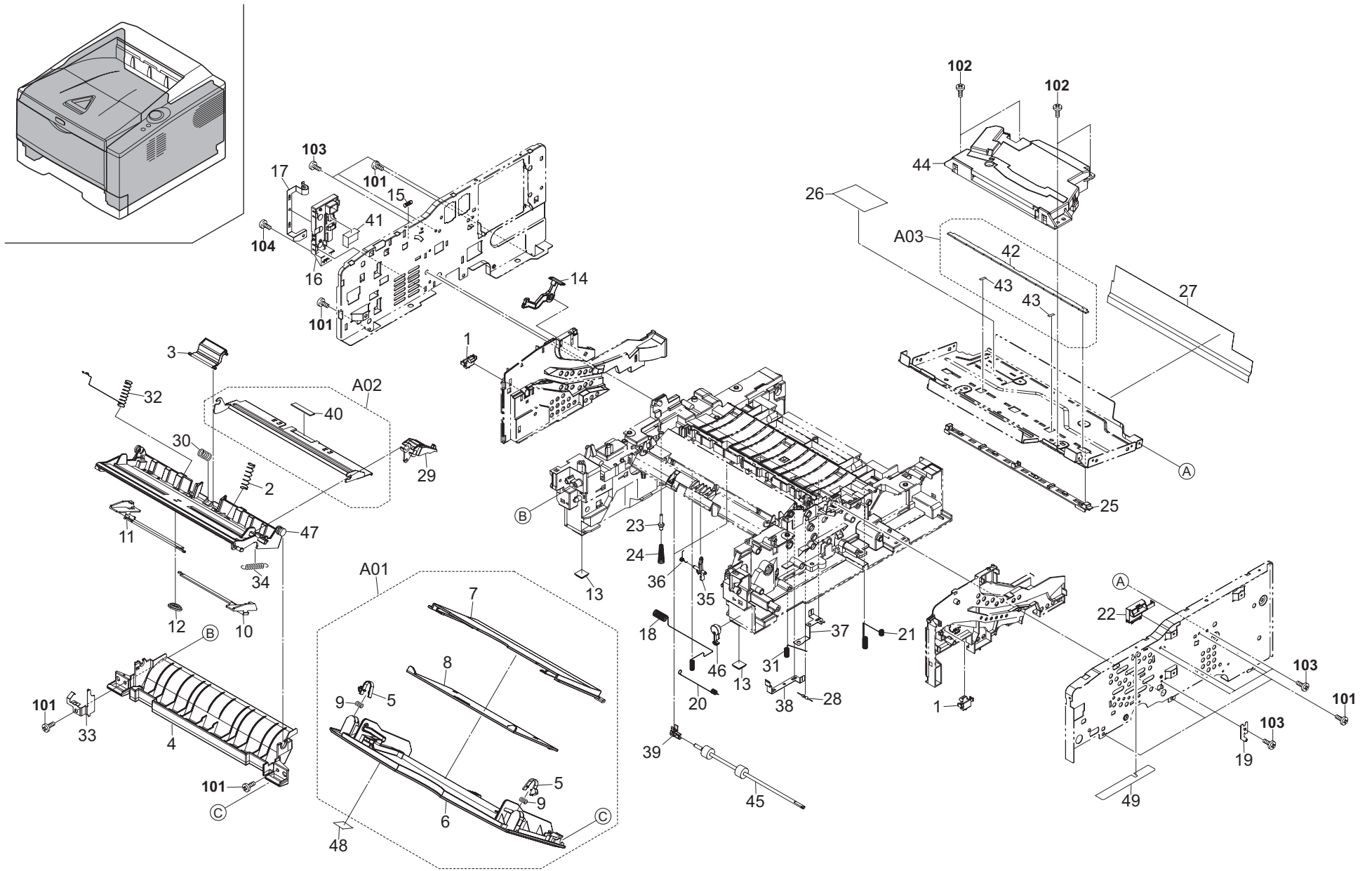


FIG. 2 Frames (Duplex model)

2H5/2HS-1

Ref. No.	Part.No.	Alternative.	Description	Quantity			
				110	120	230	240
1	302F902420	2F902420	LOCK COVER TOP R	2	2	2	2
2	302F908270	2F908270	SP BOTTOM MPF L	1	1	1	1
3	302HS94040	2HS94040	SEPARATOR MPF ASSY	1	1	1	1
4	302HS08040	2HS08040	GUIDE TURN MPF	1	1	1	1
5	302HS00010	2HS00010	TRAY MPF ASSY	1	1	1	1
5	*302F908200	2F908200	LOCK COVER	2	2	2	2
6	*302HS08020	2HS08020	COVER MPF KM	1	1	1	1
7	*302HS08060	2HS08060	TRAY MPF MID	1	1	1	1
8	*302HS08220	2HS08220	TRAY MPF TOP	1	1	1	1
9	*302HS08320	2HS08320	SPRING COVER MPF	2	2	2	2
10	302HS08241	2HS08241	GUIDE MPF R	1	1	1	1
11	302HS08251	2HS08251	GUIDE MPF L	1	1	1	1
12	5MVG137DN032	2A806720	GEAR MPF /A-49 MPF A4	1	1	1	1
13	5MVX221RB014	2BS03110	FOOT /43307C0007 A4	2	2	2	2
14	302HS02090	2HS02090	LEVER STOPPER DLP	1	1	1	1
15	302HS02100	2HS02100	SPRING STOPPER DLP	1	1	1	1
16	302HS02130	2HS02130	HOLDER MC	1	1	1	1
17	302HS02140	2HS02140	PLATE CONTACT MC	1	1	1	1
18	302HS02160	2HS02160	SPRING MC	1	1	1	1
19	302HS02291	2HS02291	PLATE EARTH DRUM	1	1	1	1
20	302HS02310	2HS02310	SPRING EARTH DU FEED	1	1	1	1
21	302HS02330	2HS02330	SPRING EARTH DU PLATE	1	1	1	1
22	302HS02350	2HS02350	COVER CABLE B	1	1	1	1
23	302HS02460	2HS02460	PIN CONTACT BIAS	1	1	1	1
24	302HS02470	2HS02470	SPRING PIN BIAS	1	1	1	1
25	302HS02500	2HS02500	HOLDER ERASER	1	1	1	1
26	302HS02580	2HS02580	SHEET DUCT LSU	1	1	1	1
27	302HS02590	2HS02590	SHEET DUCT FD	1	1	1	1
28	7RHA2H10701+H01	RH043740	M.GLAZE R. 100MJ 1/2W	1	1	1	1
29	302HS08100	2HS08100	BRACKET BOTTOM	1	1	1	1
30	302HS08170	2HS08170	SPRING SEPARATOR	1	1	1	1
31	302HS24300	2HS24300	SPRING CONTACT TC	1	1	1	1
32	302HS08210	2HS08210	SPRING EARTH MPF	1	1	1	1
33	302HS08230	2HS08230	PLATE EARTH BOTTOM	1	1	1	1
34	302HS08270	2HS08270	SPRING BRACKET	1	1	1	1
35	302HS24060	2HS24060	ACTUATOR REGIST	1	1	1	1
36	302HS24070	2HS24070	SPRING ACTUATOR REG	1	1	1	1
37	302HS24080	2HS24080	PLATE EARTH HV	1	1	1	1
38	302HS24110	2HS24110	PLATE ERATH PAPER CHUTE	1	1	1	1
39	302HS24130	2HS24130	BUSH 4 DU ROLL	2	2	2	2
40	302HS94050	2HS94050	PLATE BOTTOM MPF ASSY	1	1	1	1
40	*302F908310	2F908310	PAD FRICTION MPF	1	1	1	1
41	302HS02680	2HS02680	SHEET MC CABLE	1	1	1	1
42	302HS94110	2HS94110	ERASER KIT	1	1	1	1
43	*302HS01050	2HS01050	P.W.BOARD ASSY /ERASER	1	1	1	1
43	*302HS02630	2HS02630	TAPE ERASER	2	2	2	2
44	302HS93090	2HS93090	LK-130	1	1	1	1
45	302HS24160	2HS24160	ROLLER DU	2	2	2	2
46	302HS02650	2HS02650	HOOK PF	1	1	1	1
47	302HS08050	2HS08050	BASE MPF	1	1	1	1

Ref. No.	Part.No.	Alternative.	Description	Quantity			
				110	120	230	240
48	302G634070	2G634070	LABEL ENERGY STAR	1	1	1	1
49	302HS02670	2HS02670	SHEET FAN R	1	1	1	1
101	5MBTPB4010PW++R	B1A64100	BIND T.T SCREW(+)/ M4 X 10 CRFREE P-T				
102	7BB600308H	BB055190	+BIND SCREW M3X8 CRFREE SR				
103	5MBTPB3006TW++R	B1A53060	BIND T.T SCREW(+)/ M3 X 6 CRFREE S-T				
104	5MBTPB3008PW++R	B1A63080	BIND T.T SCREW(+)/ M3 X 8 CRFREE P-T				

- Parts with "*" are component parts or sub-assemblies of the assembly appearing immediately above them.
- Parts with "⊙" indicate regular maintenance parts.

- Parts with "••" are component parts or sub-assembly with "•" appearing immediately above them.

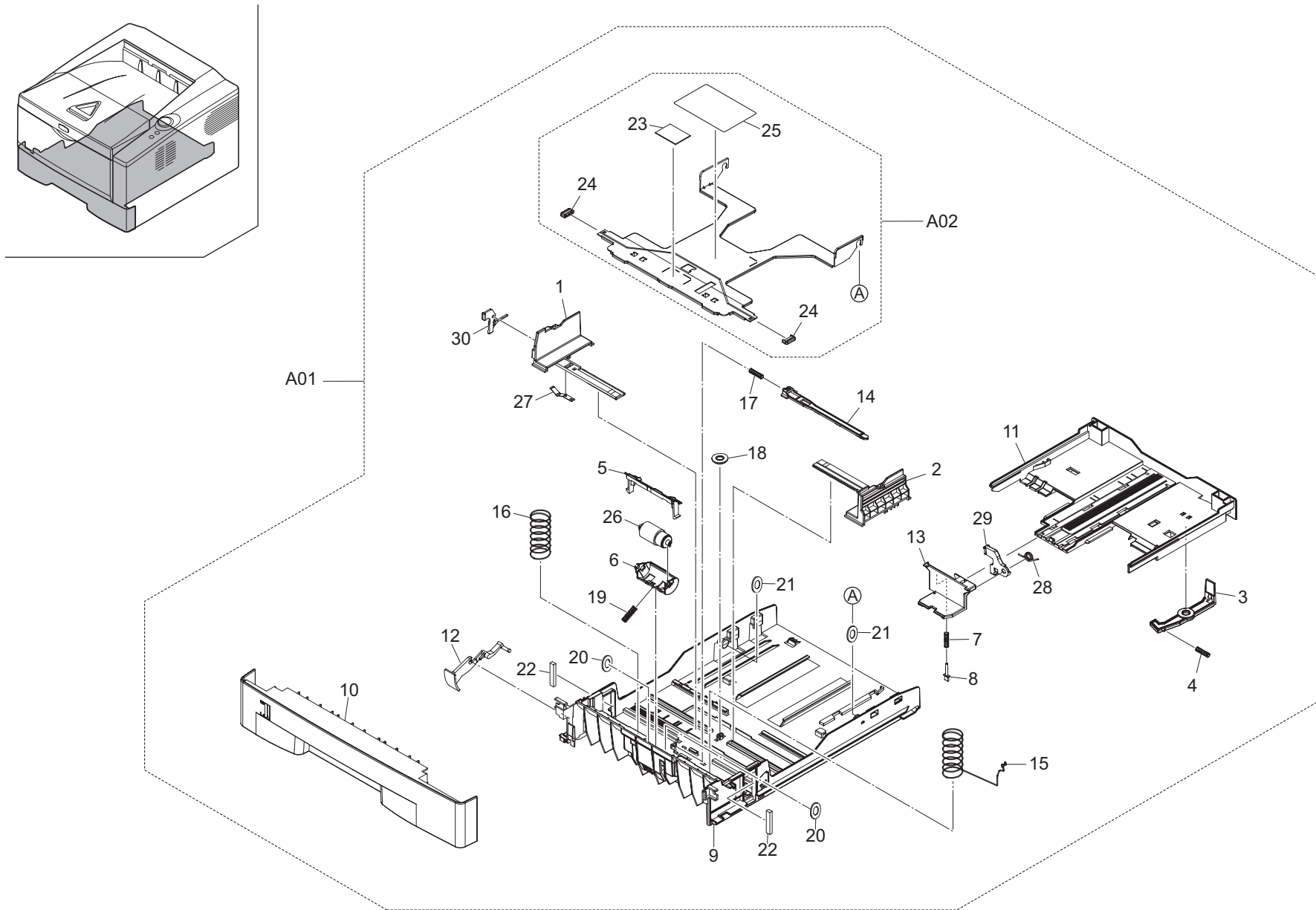


FIG. 3 Paper Cassette

2H5/2HS-1

Ref. No.	Part.No.	Alternative.	Description	Quantity			
				110	120	230	240
⊙ A01	302HS93082	2HS93082	CT-130	1	1	1	1
1	*2FM06010	5MVX765SH004	GUIDE SIDE L /B-11 CASSETTE A2	1	1	1	1
2	*2FM06020	5MVX765SH005	GUIDE SIDE R /B-11 CASSETTE A2	1	1	1	1
3	*302F909031	2F909031	LEVER BASE CAS REAR	1	1	1	1
4	*302F909040	2F909040	SPRING BASE CAS REAR	1	1	1	1
5	*302GJ09111	2GJ09111	GUIDE RETARD	1	1	1	1
6	*302GJ09120	2GJ09120	HOLDER RETARD	1	1	1	1
7	*302HN09190	2HN09190	SPRING FIX	1	1	1	1
8	*302HN09240	2HN09240	SIZE FIX	1	1	1	1
9	*302HS09011	2HS09011	BASE CASSETTE	1	1	1	1
⊙ 10	*302HS09020	2HS09020	COVER CASSETTE KM	1	1	1	1
11	*302HS09040	2HS09040	BASE CASSETTE REAR	1	1	1	1
12	*302HS09070	2HS09070	PAPER INDICATOR	1	1	1	1
13	*302HS09081	2HS09081	CURSOR END	1	1	1	1
14	*302HS09100	2HS09100	LOCK BOTTOM	1	1	1	1
15	*302HS09120	2HS09120	SPRING BOTTOM L	1	1	1	1
16	*302HS09130	2HS09130	SPRING BOTTOM R	1	1	1	1
17	*302HS09140	2HS09140	SPRING LOCK BOTTOM	1	1	1	1
18	*302HS09160	2HS09160	GEAR CASSETTE	1	1	1	1
19	*302HS09180	2HS09180	SPRING RETARD	1	1	1	1
20	*302HS09210	2HS09210	SEAL RETARD WASHER	2	2	2	2
21	*302HS09220	2HS09220	CUT POLYSLIDER 11_8	2	2	2	2
22	*302HS09231	2HS09231	SPONGE CASSETTE	2	2	2	2
⊙ A02	*302HS94000	2HS94000	PLATE BOTTOM ASSY	1	1	1	1
23	**302F909210	2F909210	PAD BOTTOM	1	1	1	1
24	**302HS09170	2HS09170	CAP BOTTOM	2	2	2	2
25	**302HS34030	2HS34030	LABEL OPERATION	1	1	1	1
⊙ 26	*5AAVROLL+052	2BR06520	RETARD ROLL ASSY /43487V0005 A4	1	1	1	1
27	*5MMP141LD002	2A807510	PLATE SIDE GUIDE /A49 CASSETTE A4	1	1	1	1
28	*5MMW171LD006	2A807530	SPRING STOPPER /A49 CASSETTE A4	1	1	1	1
29	*5MVX541DG002	2A807191	LEVER REAR /A-49 CASSETTE A3	1	1	1	1
30	*5MVX541DG003	2A807161	LEVER SIDE /A-49 CASSETTE A3	1	1	1	1

- Parts with "*" are component parts or sub-assemblies of the assembly appearing immediately above them.
- Parts with "⊙" indicate regular maintenance parts.

- Parts with "*•" are component parts or sub-assembly with "*" appearing immediately above them.

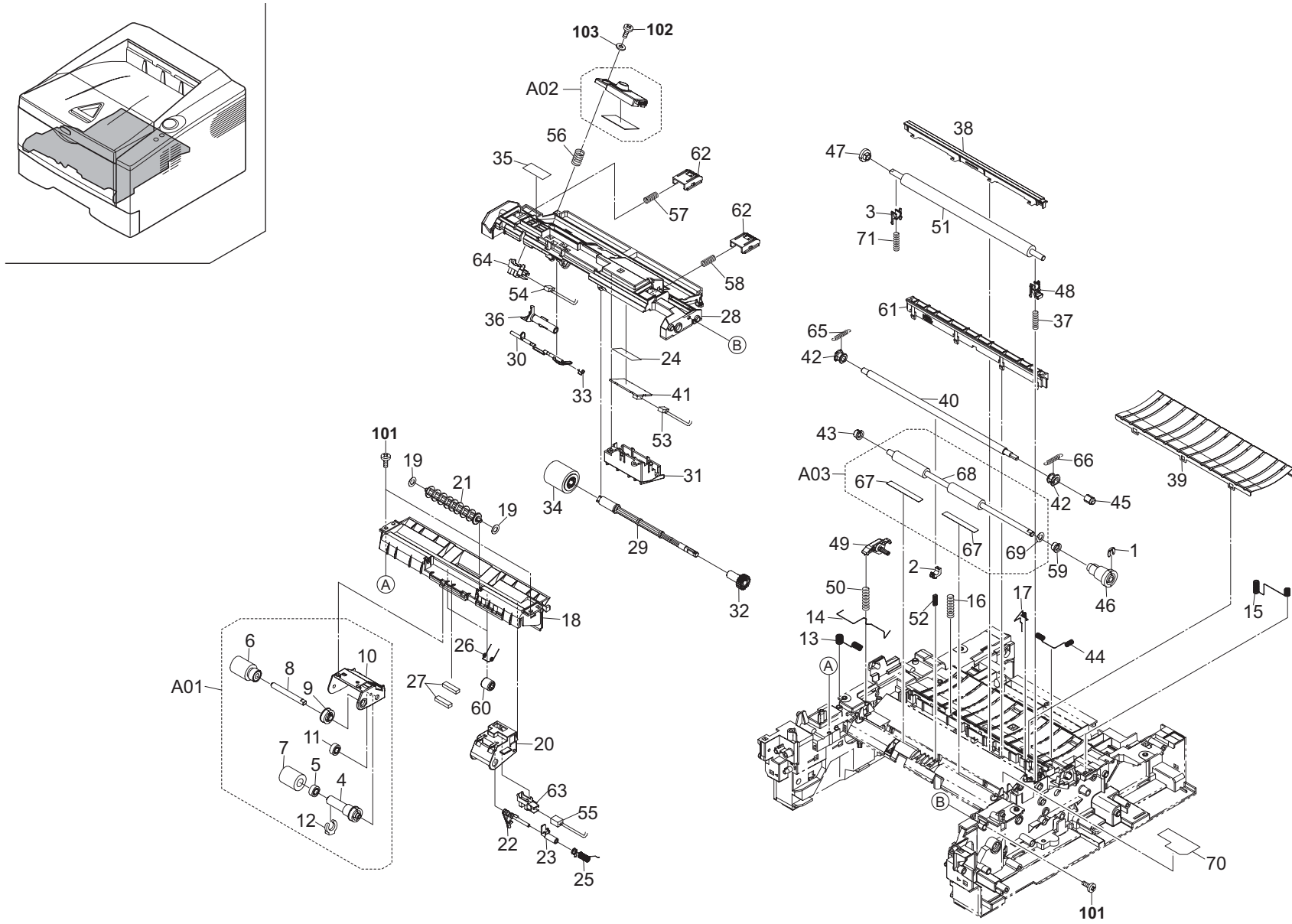


FIG. 4 Paper Feed Section 1

2H5/2HS-1

Ref. No.	Part.No.	Alternative.	Description	Quantity			
				110	120	230	240
1	5MVX111DN003	2A806250	RING STOPPER /A-49 FEED A4	1	1	1	1
2	2FM02180	5MVX221DN020	BUSH REGIST C /B-11 FRAME A3	1	1	1	1
3	302A816031	2A816031	BUSH TC R /A-49 FEED A4	1	1	1	1
⊙ A01	302HS94030	2HS94030	HOLDER FEED ASSY	1	1	1	1
4	*302F906170	2F906170	JOINT PICKUP A	1	1	1	1
5	*302F906180	2F906180	JOINT PICKUP B	1	1	1	1
6	*302F906230	2F906230	PULLEY FEED ASSY	1	1	1	1
7	*302F906240	2F906240	PULLEY PICKUP ASSY	1	1	1	1
8	*302F906270	2F906270	SHAFT FEED L	1	1	1	1
9	*302F906280	2F906280	GEAR FEED Z30H	1	1	1	1
10	*302HS06020	2HS06020	HOLDER FEED	1	1	1	1
11	*302HS06090	2HS06090	GEAR Z22S FEED	1	1	1	1
⊙	*5MVX111DN003	2A806250	RING STOPPER /A-49 FEED A4	1	1	1	1
13	302HS02250	2HS02250	SPRING EARTH REG UP	1	1	1	1
14	302HS02260	2HS02260	SPRING EARTH REG LOW	1	1	1	1
15	302HS02340	2HS02340	SPRING EARTH RIGHT	1	1	1	1
16	302HS02410	2HS02410	SPRING EARTH DU MID (Duplex model)	1	1	1	1
17	302HS02440	2HS02440	SPRING EARTH DLP PLATE	1	1	1	1
18	302HS06010	2HS06010	FRAME FEED	1	1	1	1
19	302HS06150	2HS06150	SEAL FEED PULLEY	2	2	2	2
20	302HS06040	2HS06040	GUIDE FEED R	1	1	1	1
21	302HS06050	2HS06050	PULLEY FEED	1	1	1	1
⊙	22	302HS06060	ACTUATOR EMPTY A	1	1	1	1
⊙	23	302HS06070	ACTUATOR EMPTY B	1	1	1	1
24	302HS19220	2HS19220	TAPE FFC	1	1	1	1
25	302HS06120	2HS06120	SPRING ACTUATOR	1	1	1	1
26	302HS06130	2HS06130	SPRING PULLEY (Duplex model)	2	2	2	2
27	302HS06140	2HS06140	SEAL FRAME FEED	2	2	2	2
28	302HS08010	2HS08010	FRAME MPF	1	1	1	1
29	302HS08080	2HS08080	SHAFT FEED MPF (Duplex model)	1	1	1	1
⊙	30	302HS08110	ACTUATOR MPF (Duplex model)	1	1	1	1
31	302HS08140	2HS08140	BASE IC PWB	1	1	1	1
⊙	32	302HS08160	GEAR Z20S MPF (Duplex model)	1	1	1	1
33	302HS08190	2HS08190	SPRING ACTUATOR (Duplex model)	1	1	1	1
⊙	34	302HS08260	ROLLER M/P ASSY (Duplex model)	1	1	1	1
35	302HS08290	2HS08290	FILM SENSOR (Duplex model)	1	1	1	1
36	302HS08300	2HS08300	HOLDER FEED M/P (Duplex model)	1	1	1	1
⊙	A02	302HS94150	EMPTY SENSOR KIT SP	1	1	1	1
37	302HS24400	2HS24400	SPRING TC R	1	1	1	1
38	302HS24010	2HS24010	GUIDE PAPER CHUTE	1	1	1	1
39	302HS24020	2HS24020	GUIDE EARTH	1	1	1	1
⊙	40	302HS24040	ROLLER REGIST UP	1	1	1	1
41	302HS01130	2HS01130	P.W.B RFID WITH SOFTWARE	1	1	1	1
42	302HS24120	2HS24120	BUSH REGIST	2	2	2	2
43	302HS24140	2HS24140	BUSH 6 EW	1	1	1	1
44	302HS24310	2HS24310	SPRING EARTH BRUSH	1	1	1	1
⊙	45	302HS24190	GEAR Z14R REG UP	1	1	1	1
⊙	46	302HS24200	GEAR Z21L-Z23L REG LOW	1	1	1	1
⊙	47	302HS24210	GEAR Z16L TC	1	1	1	1
⊙	48	302HS24250	BUSH TC R	1	1	1	1

- Parts with "*" are component parts or sub-assemblies of the assembly appearing immediately above them.
- Parts with "⊙" indicate regular maintenance parts.

Ref. No.	Part.No.	Alternative.	Description	Quantity			
				110	120	230	240
49	302HS24260	2HS24260	LEVER RELEASE TC L	1	1	1	1
50	302HS24280	2HS24280	SPRING RELEASE TC L	1	1	1	1
⊙	51	302HS24170	ROLLER TRANSFER E	1	1	1	1
⊙	51	302HS24340	ROLLER TRANSFER U	1	1	1	1
52	302HS24360	2HS24360	SPRING REGIST C	1	1	1	1
53	302HS46050	2HS46050	CONN.CORD ASSY CONTROL-RFID S03244	1	1	1	1
54	302HS46150	2HS46150	CONN.CORD ASSY CONTROL-MPFSEN SOR S03251 (Duplex model)	1	1	1	1
55	302HS46160	2HS46160	CONN.CORD ASSY CONTROL-P.SENSOR	1	1	1	1
56	5MMW261LD036	2A814570	SPRING TE SENSOR /A-49 DLP A4	1	1	1	1
57	5MMW261LD067	2FV02270	SPRING LEVER LOCK L	1	1	1	1
58	5MMW261LD068	2FV02280	SPRING LEVER LOCK R	1	1	1	1
59	302HS24460	2HS24460	BUSH REGIST R	1	1	1	1
60	5MVM273DB005	2A820100	PULLEY EXIT /A-49 FUSER A3 (Duplex model)	2	2	2	2
⊙	61	302HS94060	HOLDER DC BRUSH ASSY	1	1	1	1
⊙	62	5MVX431DN005	LEVER LOCK DLP	2	2	2	2
63	7NXSG2481+++H01	NX052600	SENSOR OPT.	1	1	1	1
64	7NXSG2481+++H01	NX052600	SENSOR OPT. (Duplex model)	1	1	1	1
⊙	65	302HS24350	SPRING REGIST L	1	1	1	1
⊙	66	302HS24240	SPRING REGIST R	1	1	1	1
⊙	A03	302HS94080	REGIST LOW KIT	1	1	1	1
67	*302HS24180	2HS24180	SHEET REGIST	2	2	2	2
68	*302HS24410	2HS24410	ROLLER REGIST LOW	1	1	1	1
69	*7BC460529080H01	BC059590	CUT WASHER 5.2X9.0X0.8T(BLACK)	1	1	1	1
70	302HS24420	2HS24420	FILM REGIST GUIDE	1	1	1	1
71	302HS24390	2HS24390	SPRING TC L	1	1	1	1
101	5MBTPB4010PW++R	B1A64100	BIND T.T SCREW(+)/ M4 X 10 CRFREE P-T				
102	BAA63080	BAA63080	+TP TAP-TITE P SCREW M3X08				
103	7BC00030A080H01	BC046150	WASHER M3X10X0.8T				

- Parts with "••" are component parts or sub-assembly with "•" appearing immediately above them.

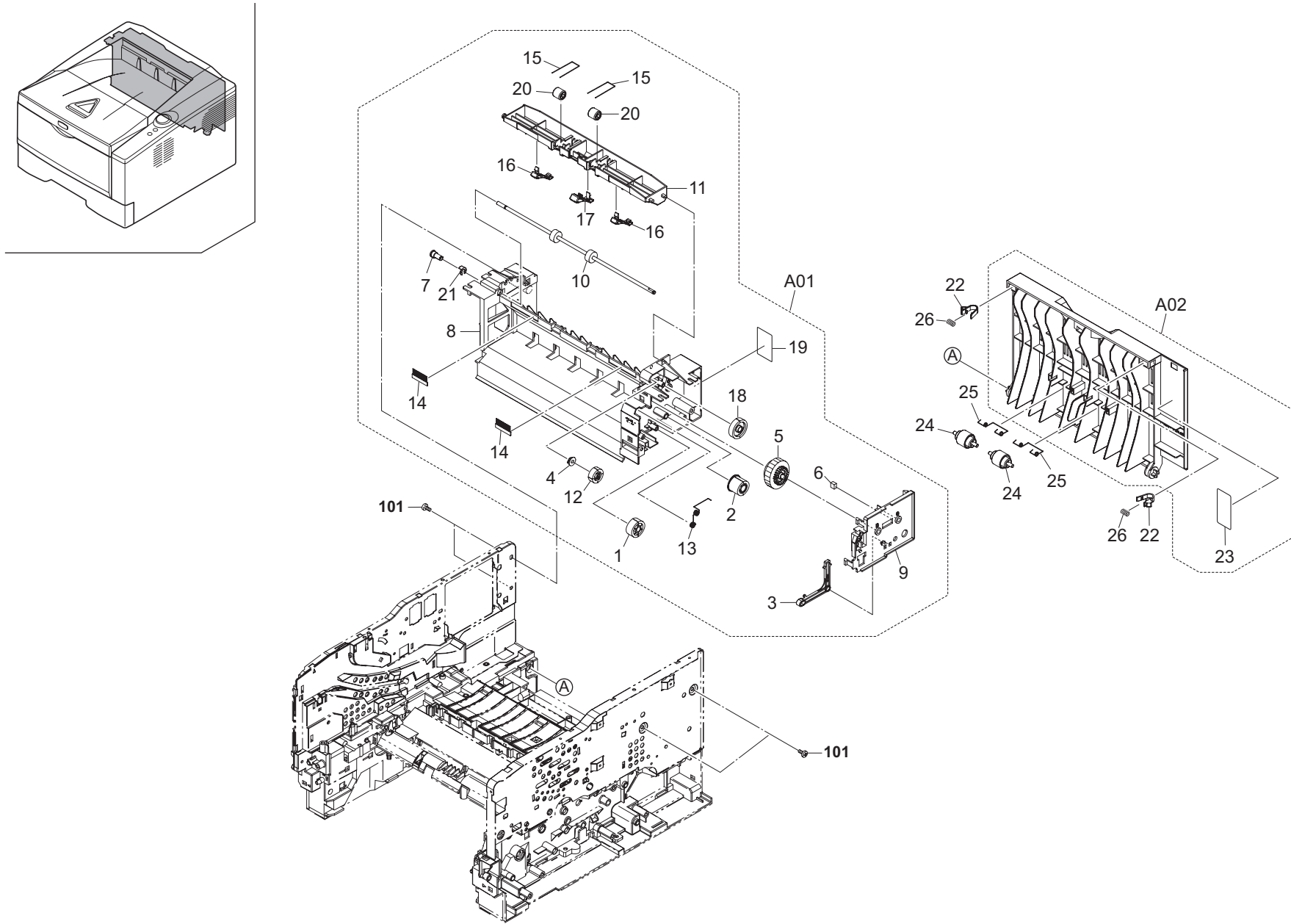


FIG. 5 Paper Feed Section 2 (Simplex model)

2H5/2HS-1

Ref. No.	Part.No.	Alternative.	Description	Quantity			
				110	120	230	240
⊙ A01	302H594031	2H594031	FD ASSY (2H5) SP	1	1	1	1
⊙ 1	*2BL06380	2BL06380	GEAR Z25 JOINT	1	1	1	1
⊙ 2	*2FM02350	5MVG133DN022	GEAR Z22 /B-11 FRAME A4	1	1	1	1
⊙ 3	*2FM20050	5MVX651DN001	LEVER SOLENOID /B-11 FD A3	1	1	1	1
⊙ 4	*302F929140	2F929140	BUSH DU	1	1	1	1
⊙ 5	*302FM94020	2FM94020	GEAR CLUTCH ASSY A SP	1	1	1	1
⊙ 6	*302H528010	2H528010	LEVER STOPPER	1	1	1	1
⊙ 7	*302HN29050	2HN29050	BUSH DU	1	1	1	1
⊙ 8	*302HS28012	2HS28012	FRAME FD	1	1	1	1
⊙ 9	*302HS28021	2HS28021	COVER FRAME FD	1	1	1	1
⊙ 10	*302HS28030	2HS28030	ROLLER FD UP	1	1	1	1
⊙ 11	*302HS28040	2HS28040	COVER FD	1	1	1	1
⊙ 12	*302HS28060	2HS28060	GEAR Z21S	1	1	1	1
⊙ 13	*302HS28110	2HS28110	SPRING EARTH	1	1	1	1
⊙ 14	*302HS28131	2HS28131	DISCHARGER FD	2	2	2	2
⊙ 15	*302HS28140	2HS28140	SPRING PULLEY	2	2	2	2
⊙ 16	*302HS28150	2HS28150	GUIDE FD SIDE	2	2	2	2
⊙ 17	*302HS28160	2HS28160	GUIDE FD CENTER	1	1	1	1
⊙ 18	*302HS28170	2HS28170	GEAR FD Z29S	1	1	1	1
⊙ 19	*302HS34010	2HS34010	LABEL FUSER CAUTION	1	1	1	1
⊙ 20	*5MVM273DB005	2A820100	PULLEY EXIT /A-49 FUSER A3	2	2	2	2
⊙ 21	*5MVX111DN007	2BT11070	STOPPER 3 /2BT1107 A4	1	1	1	1
⊙ 22	302F908200	2F908200	LOCK COVER	2	2	2	2
⊙ A02	302HS94160	2HS94160	COVER REAR ASSY SP	1	1	1	1
⊙ 23	*302HS34020	2HS34020	LABEL FUSER JAM	1	1	1	1
⊙ 24	302HS28070	2HS28070	PULLEY EXIT	2	2	2	2
⊙ 25	302HS28120	2HS28120	SPRING EXIT	2	2	2	2
⊙ 26	302HS08320	2HS08320	SPRING COVER MPF	2	2	2	2

Ref. No.	Part.No.	Alternative.	Description	Quantity			
				110	120	230	240
101	5MBTPB4010PW++R	B1A64100	BIND T.T SCREW(+)/ M4 X 10 CRFREE P-T				

- Parts with "*" are component parts or sub-assemblies of the assembly appearing immediately above them.
- Parts with "⊙" indicate regular maintenance parts.

- Parts with "••" are component parts or sub-assembly with "•" appearing immediately above them.

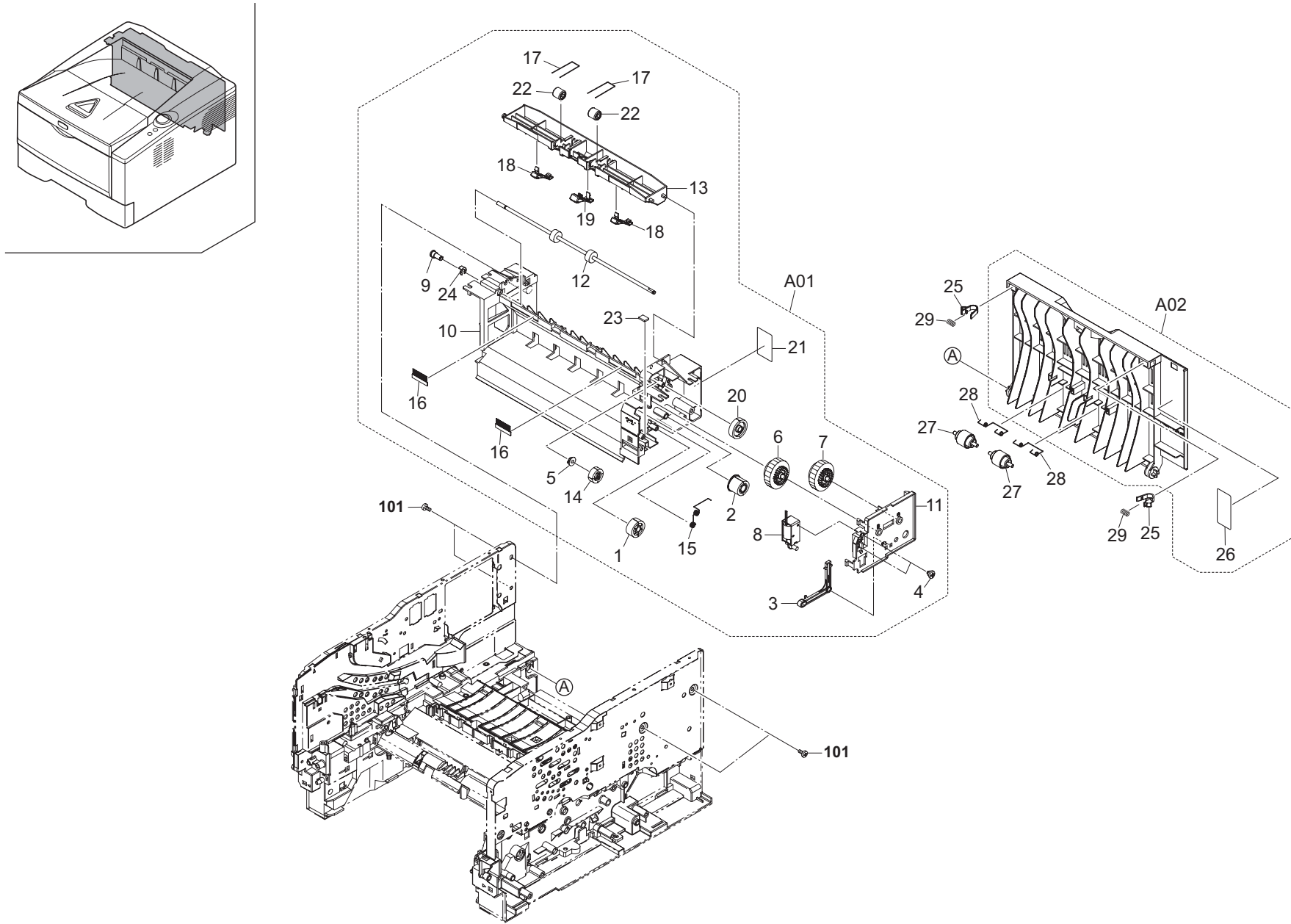


FIG. 5 Paper Feed Section 2 (Duplex model)

2H5/2HS-1

Ref. No.	Part.No.	Alternative.	Description	Quantity			
				110	120	230	240
⊙ A01	302HS94171	2HS94171	FD ASSY (2HS) SP	1	1	1	1
⊙ 1	*2BL06380	2BL06380	GEAR Z25 JOINT	1	1	1	1
⊙ 2	*2FM02350	5MVG133DN022	GEAR Z22 /B-11 FRAME A4	1	1	1	1
⊙ 3	*2FM20050	5MVX651DN001	LEVER SOLENOID /B-11 FD A3	1	1	1	1
⊙ 4	*302F325010	2F325010	STUD SCREW M3	2	2	2	2
⊙ 5	*302F929140	2F929140	BUSH DU	1	1	1	1
⊙ 6	*302FM94020	2FM94020	GEAR CLUTCH ASSY A SP	1	1	1	1
⊙ 7	*302FM94030	2FM94030	GEAR CLUTCH ASSY B SP	1	1	1	1
⊙ 8	*302G694070	2G694070	SOLENOID ASSY SP	1	1	1	1
⊙ 9	*302HN29050	2HN29050	BUSH DU	1	1	1	1
⊙ 10	*302HS28012	2HS28012	FRAME FD	1	1	1	1
⊙ 11	*302HS28021	2HS28021	COVER FRAME FD	1	1	1	1
⊙ 12	*302HS28030	2HS28030	ROLLER FD UP	1	1	1	1
⊙ 13	*302HS28040	2HS28040	COVER FD	1	1	1	1
⊙ 14	*302HS28060	2HS28060	GEAR Z21S	1	1	1	1
⊙ 15	*302HS28110	2HS28110	SPRING EARTH	1	1	1	1
⊙ 16	*302HS28131	2HS28131	DISCHARGER FD	2	2	2	2
⊙ 17	*302HS28140	2HS28140	SPRING PULLEY	2	2	2	2
⊙ 18	*302HS28150	2HS28150	GUIDE FD SIDE	2	2	2	2
⊙ 19	*302HS28160	2HS28160	GUIDE FD CENTER	1	1	1	1
⊙ 20	*302HS28170	2HS28170	GEAR FD Z29S	1	1	1	1
⊙ 21	*302HS34010	2HS34010	LABEL FUSER CAUTION	1	1	1	1
⊙ 22	*5MVM273DB005	2A820100	PULLEY EXIT /A-49 FUSER A3	2	2	2	2
⊙ 23	*5MVS217SN002	2A806280	PAD SOLENOID /FS-1000 A4	1	1	1	1
⊙ 24	*5MVX111DN007	2BT11070	STOPPER 3 /2BT1107 A4	1	1	1	1
⊙ 25	302F908200	2F908200	LOCK COVER	2	2	2	2
⊙ A02	302HS94160	2HS94160	COVER REAR ASSY SP	1	1	1	1
⊙ 26	*302HS34020	2HS34020	LABEL FUSER JAM	1	1	1	1
⊙ 27	302HS28070	2HS28070	PULLEY EXIT	2	2	2	2
⊙ 28	302HS28120	2HS28120	SPRING EXIT	2	2	2	2
⊙ 29	302HS08320	2HS08320	SPRING COVER MPF	2	2	2	2

Ref. No.	Part.No.	Alternative.	Description	Quantity			
				110	120	230	240
101	5MBTPB4010PW++R	B1A64100	BIND T.T SCREW(+)/ M4 X 10 CRFREE P-T				

- Parts with "*" are component parts or sub-assemblies of the assembly appearing immediately above them.
- Parts with "⊙" indicate regular maintenance parts.

- Parts with "••" are component parts or sub-assembly with "•" appearing immediately above them.

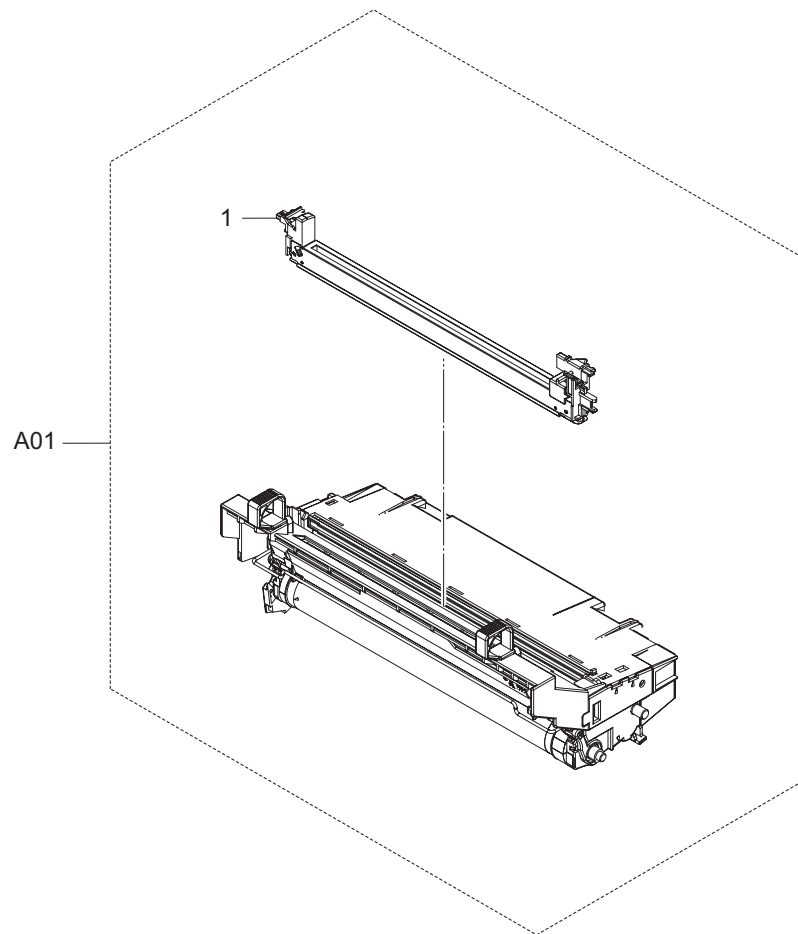
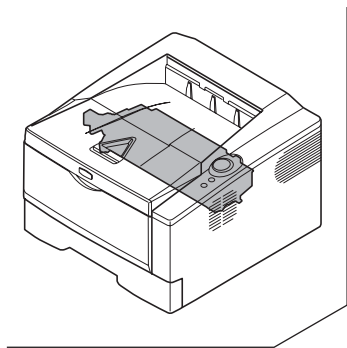


FIG. 6 Image Formation Section

2H5/2HS-1

	Ref. No.	Part.No.	Alternative.	Description	Quantity			
					110	120	230	240
⊙	A01	302HS93010	2HS93010	DK-130		1	1	1
⊙	A01	302HS93170	2HS93170	DK-130(ASIA)	1			
⊙	1	*302HS93070	2HS93070	MC-130	1	1	1	1

- Parts with "*" are component parts or sub-assemblies of the assembly appearing immediately above them.
- Parts with "⊙" indicate regular maintenance parts.

- Parts with "*•" are component parts or sub-assembly with "*" appearing immediately above them.

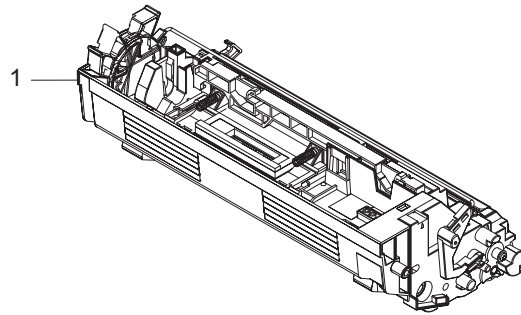
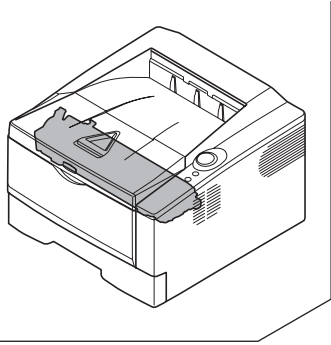


FIG. 7 Developing Section

2H5/2HS-1

	Ref. No.	Part.No.	Alternative.	Description	Quantity			
					110	120	230	240
⊙	1	302H593020	2H593020	DV-142(U) (Simplex model)		1		
⊙	1	302HS93100	2HS93100	DV-132(U) (Duplex model)		1		
⊙	1	302H593010	2H593010	DV-140(E) (Simplex model)			1	
⊙	1	302HS93020	2HS93020	DV-130(E) (Duplex model)			1	
⊙	1	302H593030	2H593030	DV-144(AO) (Simplex model)	1			1
⊙	1	302HS93140	2HS93140	DV-134(AO) (Duplex model)	1			1

- Parts with "•" are component parts or sub-assemblies of the assembly appearing immediately above them.
- Parts with "⊙" indicate regular maintenance parts.

- Parts with "••" are component parts or sub-assembly with "•" appearing immediately above them.

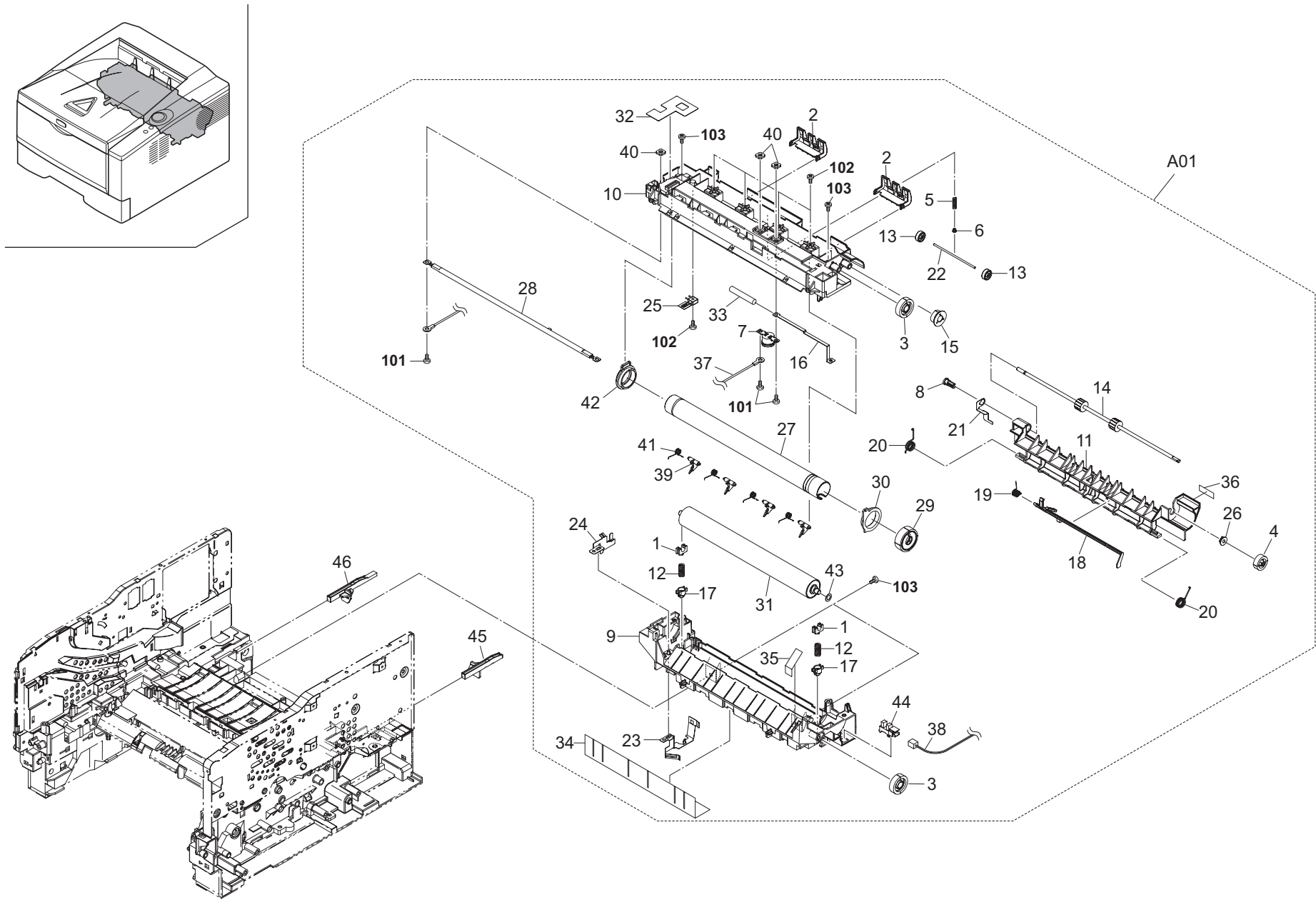


FIG. 8 Fuser Section

2H5/2HS-1

Ref. No.	Part.No.	Alternative.	Description	Quantity			
				110	120	230	240
⊙ A01	302HS93150	2HS93150	FK-130(TW)	1			
⊙ A01	302HS93050	2HS93050	FK-130(U)		1		
⊙ A01	302HS93040	2HS93040	FK-130(E)			1	1
⊙ 1	*2BY20070	5MVX221XN004	BUSH PRESS /49523A0152 A4	2	2	2	2
2	*2FM02190	5MVX532DN004	GUIDE CHANGE /B-11 FRAME A3	2	2	2	2
⊙ 3	*302F925080	2F925080	GEAR IDLE A Z29	2	2	2	2
⊙ 4	*302F925140	2F925140	GEAR EXIT Z21	1	1	1	1
5	*302F925340	2F925340	SPRING EXIT	1	1	1	1
6	*302F925901	2F925901	CAP SPRING EXIT	1	1	1	1
⊙ 7	*302GR25290	2GR25290	THERMOSTAT M FUSER	1	1	1	1
8	*302HN25450	2HN25450	BUSH EXIT	1	1	1	1
9	*302HS25010	2HS25010	FRAME FUSER LOW	1	1	1	1
10	*302HS25021	2HS25021	FRAME FUSER UP	1	1	1	1
11	*302HS25030	2HS25030	GUIDE EXIT LOW	1	1	1	1
12	*302HS25040	2HS25040	SPRING PRESSURE	2	2	2	2
13	*302HS25050	2HS25050	PULLEY EXIT FUSER	2	2	2	2
⊙ 14	*302HS25060	2HS25060	ROLLER EXIT	1	1	1	1
⊙ 15	*302HS25070	2HS25070	GEAR Z18S IDLE	1	1	1	1
16	*302HS25080	2HS25080	PLATE CODE	1	1	1	1
17	*302HS25100	2HS25100	HOLDER SPRING PRESS	2	2	2	2
18	*302HS25110	2HS25110	ACTUATOR FUSER	1	1	1	1
19	*302HS25120	2HS25120	SPRING ACTUATOR	1	1	1	1
20	*302HS25130	2HS25130	SPRING EXIT L	2	2	2	2
21	*302HS25140	2HS25140	PLATE EARTH EXIT	1	1	1	1
22	*302HS25150	2HS25150	SHAFT EXIT	1	1	1	1
23	*302HS25160	2HS25160	PLATE EARTH L	1	1	1	1
24	*302HS25170	2HS25170	PLATE EARTH ROLLER	1	1	1	1
⊙ 25	*302HS25190	2HS25190	THERMISTOR FUSER	1	1	1	1
26	*302HS25220	2HS25220	BUSH FUSER	1	1	1	1
⊙ 27	*302HS25230	2HS25230	ROLLER HEAT	1	1	1	1
⊙ 28	*302HS25240	2HS25240	HEATER LAMP E			1	1
⊙ 28	*302HS25300	2HS25300	HEATER LAMP U		1		
⊙ 28	*302HS25390	2HS25390	HEATER LAMP 110	1			
⊙ 29	*302HS25260	2HS25260	GEAR Z36S HEAT	1	1	1	1
⊙ 30	*302HS25280	2HS25280	BUSH HEAT R	1	1	1	1
⊙ 31	*302HS25360	2HS25360	ROLLER PRESS	1	1	1	1
32	*302HS25400	2HS25400	SHEET FUSER	1	1	1	1
33	*302HS25410	2HS25410	TUBE PLATE CODE	1	1	1	1
34	*302HS25440	2HS25440	FILM FUSER LOW	1	1	1	1
35	*302HS25450	2HS25450	FILM GATE COVER	1	1	1	1
36	*302HS34120	2HS34120	LABEL FUSER OPERATION	1	1	1	1
37	*302HS46100	2HS46100	CONN.CORD ASSY PWS-HEATER(E) S033			1	1
37	*302HS46110	2HS46110	CONN.CORD ASSY PWS-HEATER(U) S033	1	1		
38	*302HS46140	2HS46140	CONN.CORD ASSY CONTROL-EXITSENSOR	1	1	1	1
⊙ 39	*5AAVSEPR015	2A820360	SEPARATOR ASSY /FS-1000 A4	4	4	4	4
40	*5MMS111SL002	2BY20050	NUT FUSER A /FS-1800/3800 A4	3	3	3	3
41	*5MMW261LD055	2A820350	SPRING SEPARATOR /FS-1000 A4	4	4	4	4
⊙ 42	*5MVX441XN001	2BR20180	BUSH HEAT L /43307P0003 A4	1	1	1	1
43	*7BC04060A050H01	BC057930	FLAT A WASHER M6X10X0.5T SUS	1	1	1	1
44	*7NXSG2481+++H01	NX052600	SENSOR OPT.	1	1	1	1

Ref. No.	Part.No.	Alternative.	Description	Quantity			
				110	120	230	240
45	302HS25200	2HS25200	LEVER FUSER R	1	1	1	1
46	302HS25210	2HS25210	LEVER FUSER L	1	1	1	1
101	5MBSP43006NW++R	B4A03060	TP HEAD SCREW(+)/ M3 X 6 DRFREE				
102	5MBTPB3012PW++R	B1A63120	BIND T.T SCREW(+)/ M3 X 12 CRFREE P-T				
103	5MBTPB4010PW++R	B1A64100	BIND T.T SCREW(+)/ M4 X 10 CRFREE P-T				

- Parts with "*" are component parts or sub-assemblies of the assembly appearing immediately above them.
- Parts with "⊙" indicate regular maintenance parts.

- Parts with "••" are component parts or sub-assembly with "•" appearing immediately above them.

FIG. 9 Drive Section (Simplex model)

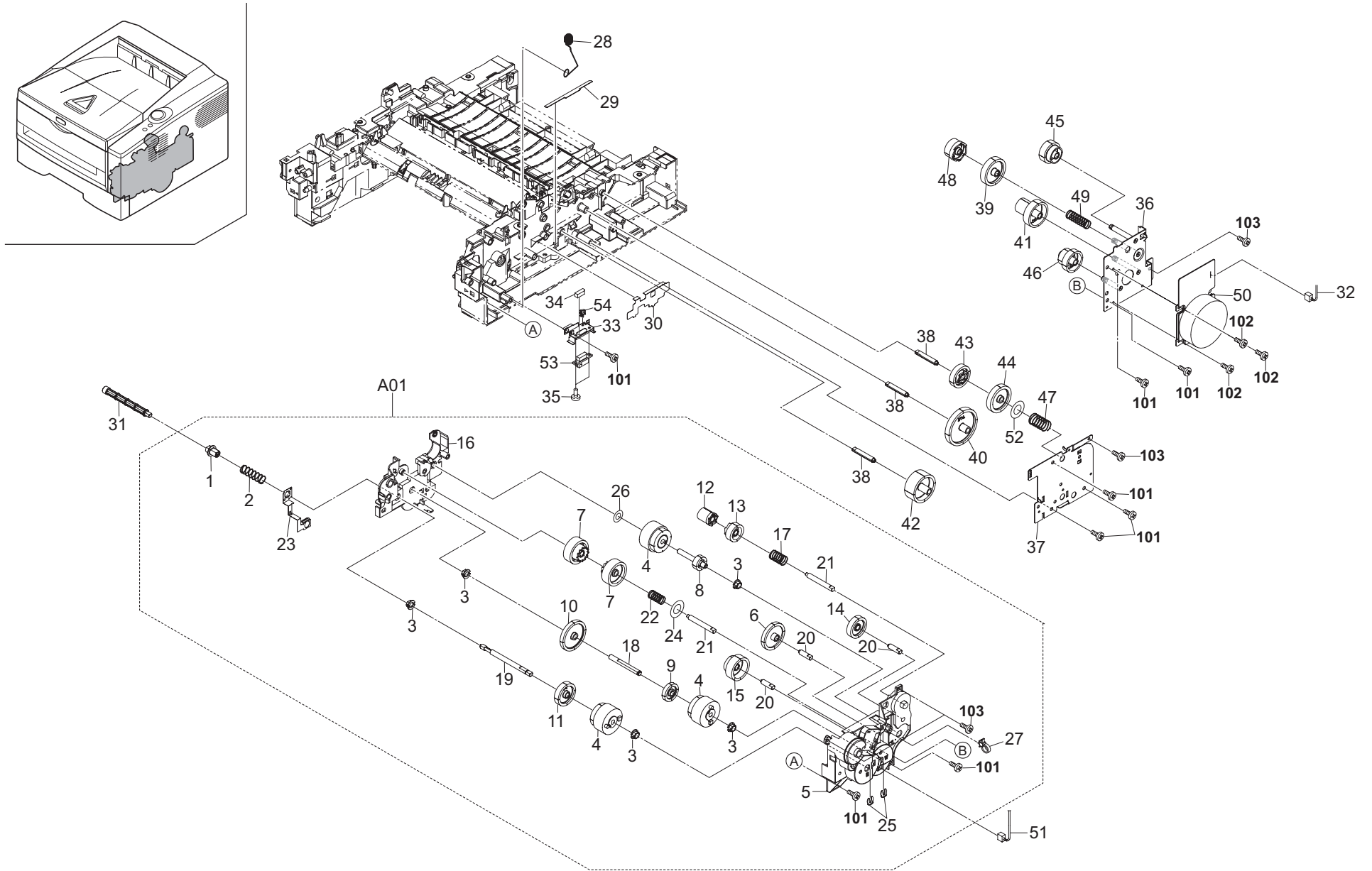


FIG. 9 Drive Section (Simplex model)

2H5/2HS-1

Ref. No.	Part.No.	Alternative.	Description	Quantity			
				110	120	230	240
⊙ A01	302H593040	2H593040	DR-140	1	1	1	1
1	*302F931350	2F931350	JOINT SHAFT CASSETTE	1	1	1	1
2	*302F931450	2F931450	SPRING FEED	1	1	1	1
3	*302F931490	2F931490	BUSH FEED DRIVE	5	5	5	5
⊙ 4	*302HN44110	2HN44110	CLUTCH FEED	3	3	3	3
⊙ 5	*302HS31030	2HS31030	DRIVE HOLDER	1	1	1	1
⊙ 6	*302HS31080	2HS31080	GEAR Z42R	1	1	1	1
⊙ 7	*302HS31090	2HS31090	GEAR Z37L FREE	2	2	2	2
⊙ 8	*302HS31100	2HS31100	GEAR Z20L CLUTCH	1	1	1	1
⊙ 9	*302HS31120	2HS31120	GEAR Z27L CLUTCH	1	1	1	1
⊙ 10	*302HS31130	2HS31130	GEAR Z45R CLUTCH	1	1	1	1
⊙ 11	*302HS31140	2HS31140	GEAR Z35R IDLE	1	1	1	1
⊙ 12	*302HS31190	2HS31190	GEAR Z17R FREE	1	1	1	1
⊙ 13	*302HS31200	2HS31200	GEAR Z26L FREE	1	1	1	1
⊙ 14	*302HS31260	2HS31260	GEAR Z32R	1	1	1	1
⊙ 15	*302HS31270	2HS31270	GEAR Z34L-Z24L	1	1	1	1
16	*302HS31290	2HS31290	DRIVE HOLDER COVER	1	1	1	1
17	*302HS31320	2HS31320	SPRING FREE MAG	1	1	1	1
18	*302HS31330	2HS31330	PIN CLUTCH	1	1	1	1
19	*302HS31340	2HS31340	SHAFT CASSETTE	1	1	1	1
20	*302HS31360	2HS31360	PIN HOLDER A	3	3	3	3
21	*302HS31370	2HS31370	PIN HOLDER B	2	2	2	2
22	*302HS31410	2HS31410	SPRING FREE Z37L	1	1	1	1
23	*302HS31420	2HS31420	EARTH PLATE DRIVE	1	1	1	1
24	*302HS31430	2HS31430	POLYSLIDER 9.5	1	1	1	1
⊙ 25	*5MVX111DN003	2A806250	RING STOPPER /A-49 FEED A4	2	2	2	2
26	*7BC06062C020H01	BC045240	POLY SLIDER WASHER M6.2X12X0.2T	1	1	1	1
27	*M2107250	M2107250	BAND,RSG-100(KITAGAWA)	1	1	1	1
28	302HS02370	2HS02370	SPRING EARTH CASSETTE	1	1	1	1
29	302HS02520	2HS02520	COVER CABLE E	1	1	1	1
30	302HS02530	2HS02530	COVER CABLE F	1	1	1	1
31	302HS06110	2HS06110	SHAFT FEED	1	1	1	1
32	302HS46040	2HS46040	CONN.CORD ASSY CONTROL-MAIN MOT	1	1	1	1
33	302HS02380	2HS02380	PLATE PF CONNECTOR	1	1	1	1
34	302HS46030	2HS46030	CONN.CORD ASSY CONTROL-PF S03247	1	1	1	1
35	302HS02540	2HS02540	PIN DRAWER	2	2	2	2
⊙ 36	302HS31020	2HS31020	PLATE DRIVE	1	1	1	1
37	302HS31040	2HS31040	PLATE GEAR DRIVE	1	1	1	1
38	302HS31060	2HS31060	PIN GEAR DRIVE	3	3	3	3
⊙ 39	302HS31070	2HS31070	GEAR Z42R FREE 2	1	1	1	1
⊙ 40	302HS31110	2HS31110	GEAR Z58L	1	1	1	1
⊙ 41	302HS31170	2HS31170	GEAR Z64R-Z21L	1	1	1	1
⊙ 42	302HS31180	2HS31180	GEAR Z44R	1	1	1	1
⊙ 43	302HS31210	2HS31210	GEAR Z35S FREE	1	1	1	1
⊙ 44	302HS31220	2HS31220	GEAR Z42R FREE	1	1	1	1
⊙ 45	302HS31240	2HS31240	GEAR Z32L DRUM	1	1	1	1
⊙ 46	302HS31250	2HS31250	GEAR Z54R-Z24R	1	1	1	1
47	302HS31310	2HS31310	SPRING FREE FUSER	1	1	1	1
⊙ 48	302HS31390	2HS31390	GEAR Z27R FREE 2	1	1	1	1
49	302HS31400	2HS31400	SPRING FREE DRUM	1	1	1	1

Ref. No.	Part.No.	Alternative.	Description	Quantity			
				110	120	230	240
⊙ 50	302HS44010	2HS44010	MOTOR MAIN	1	1	1	1
51	302HS46210	2HS46210	CONN.CORD ASSY CONTROL-F/RCLUTCH	1	1	1	1
52	302HS31430	2HS31430	POLYSLIDER 9.5	1	1	1	1
53	7YCC08B1112+H01	YC058670	CONNECTOR	1	1	1	1
54	7YZM610007++H01	YZ023340	ACCESS.SADDLE	1	1	1	1
101	5MBTPB4010PW++R	B1A64100	BIND T.T SCREW(+)/ M4 X 10 CRFREE P-T				
102	BAB53060	BAB53060	+TP TAP-TITE S SCREW M3X06				
103	5MBTPB3006TW++R	B1A53060	BIND T.T SCREW(+)/ M3 X 6 CRFREE S-T				

- Parts with "*" are component parts or sub-assemblies of the assembly appearing immediately above them.
- Parts with "⊙" indicate regular maintenance parts.

- Parts with "••" are component parts or sub-assembly with "•" appearing immediately above them.

FIG. 9 Drive Section (Duplex model)

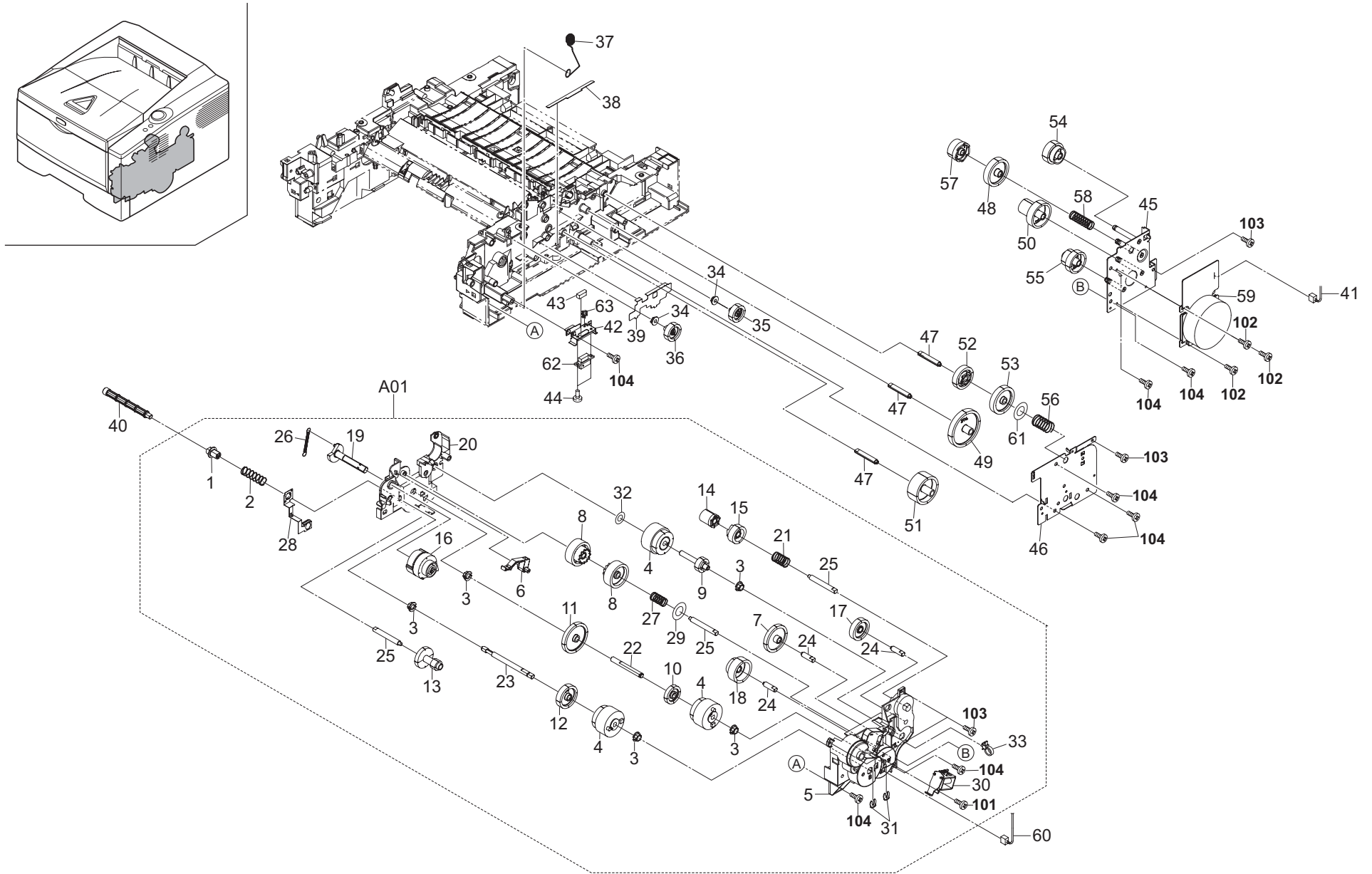


FIG. 9 Drive Section (Duplex model)

2H5/2HS-1

Ref. No.	Part.No.	Alternative.	Description	Quantity			
				110	120	230	240
⊙ A01	302HS93060	2HS93060	DR-130	1	1	1	1
1	*302F931350	2F931350	JOINT SHAFT CASSETTE	1	1	1	1
2	*302F931450	2F931450	SPRING FEED	1	1	1	1
3	*302F931490	2F931490	BUSH FEED DRIVE	5	5	5	5
⊙ 4	*302HN44110	2HN44110	CLUTCH FEED	3	3	3	3
5	*302HS31030	2HS31030	DRIVE HOLDER	1	1	1	1
6	*302HS31050	2HS31050	LEVER LIFT BOTTOM	1	1	1	1
⊙ 7	*302HS31080	2HS31080	GEAR Z42R	1	1	1	1
⊙ 8	*302HS31090	2HS31090	GEAR Z37L FREE	2	2	2	2
⊙ 9	*302HS31100	2HS31100	GEAR Z20L CLUTCH	1	1	1	1
⊙ 10	*302HS31120	2HS31120	GEAR Z27L CLUTCH	1	1	1	1
⊙ 11	*302HS31130	2HS31130	GEAR Z45R CLUTCH	1	1	1	1
⊙ 12	*302HS31140	2HS31140	GEAR Z35R IDLE	1	1	1	1
⊙ 13	*302HS31150	2HS31150	GEAR Z31L-Z14S	1	1	1	1
⊙ 14	*302HS31190	2HS31190	GEAR Z17R FREE	1	1	1	1
⊙ 15	*302HS31200	2HS31200	GEAR Z26L FREE	1	1	1	1
⊙ 16	*302HS31230	2HS31230	GEAR Z38S MPF	1	1	1	1
⊙ 17	*302HS31260	2HS31260	GEAR Z32R	1	1	1	1
⊙ 18	*302HS31270	2HS31270	GEAR Z34L-Z24L	1	1	1	1
19	*302HS31281	2HS31281	LIFT BOTTOM	1	1	1	1
20	*302HS31290	2HS31290	DRIVE HOLDER COVER	1	1	1	1
21	*302HS31320	2HS31320	SPRING FREE MAG	1	1	1	1
22	*302HS31330	2HS31330	PIN CLUTCH	1	1	1	1
23	*302HS31340	2HS31340	SHAFT CASSETTE	1	1	1	1
24	*302HS31360	2HS31360	PIN HOLDER A	3	3	3	3
25	*302HS31370	2HS31370	PIN HOLDER B	3	3	3	3
26	*302HS31380	2HS31380	SPRING LIFT BOTTOM	1	1	1	1
27	*302HS31410	2HS31410	SPRING FREE Z37L	1	1	1	1
28	*302HS31420	2HS31420	EARTH PLATE DRIVE	1	1	1	1
29	*302HS31430	2HS31430	POLYSLIDER 9.5	1	1	1	1
⊙ 30	*302HS44020	2HS44020	SOLENOID MPF	1	1	1	1
⊙ 31	*5MVX111DN003	2A806250	RING STOPPER /A-49 FEED A4	2	2	2	2
32	*7BC06062C020H01	BC045240	POLY SLIDER WASHER M6.2X12X0.2T	1	1	1	1
33	*M2107250	M2107250	BAND,RSG-100(KITAGAWA)	1	1	1	1
34	302F929140	2F929140	BUSH DU	2	2	2	2
⊙ 35	302HS24220	2HS24220	GEAR Z25R DU FEED	1	1	1	1
⊙ 36	302HS24230	2HS24230	GEAR Z26L DU MID	1	1	1	1
37	302HS02370	2HS02370	SPRING EARTH CASSETTE	1	1	1	1
38	302HS02520	2HS02520	COVER CABLE E	1	1	1	1
39	302HS02530	2HS02530	COVER CABLE F	1	1	1	1
40	302HS06110	2HS06110	SHAFT FEED	1	1	1	1
41	302HS46040	2HS46040	CONN.CORD ASSY CONTROL-MAIN MOT	1	1	1	1
42	302HS02380	2HS02380	PLATE PF CONNECTOR	1	1	1	1
43	302HS46030	2HS46030	CONN.CORD ASSY CONTROL-PF S03247	1	1	1	1
44	302HS02540	2HS02540	PIN DRAWER	2	2	2	2
⊙ 45	302HS31020	2HS31020	PLATE DRIVE	1	1	1	1
46	302HS31040	2HS31040	PLATE GEAR DRIVE	1	1	1	1
47	302HS31060	2HS31060	PIN GEAR DRIVE	3	3	3	3
⊙ 48	302HS31070	2HS31070	GEAR Z42R FREE 2	1	1	1	1
⊙ 49	302HS31110	2HS31110	GEAR Z58L	1	1	1	1

- Parts with "*" are component parts or sub-assemblies of the assembly appearing immediately above them.
- Parts with "⊙" indicate regular maintenance parts.

Ref. No.	Part.No.	Alternative.	Description	Quantity			
				110	120	230	240
⊙ 50	302HS31170	2HS31170	GEAR Z64R-Z21L	1	1	1	1
⊙ 51	302HS31180	2HS31180	GEAR Z44R	1	1	1	1
⊙ 52	302HS31210	2HS31210	GEAR Z35S FREE	1	1	1	1
⊙ 53	302HS31220	2HS31220	GEAR Z42R FREE	1	1	1	1
⊙ 54	302HS31240	2HS31240	GEAR Z32L DRUM	1	1	1	1
⊙ 55	302HS31250	2HS31250	GEAR Z54R-Z24R	1	1	1	1
56	302HS31310	2HS31310	SPRING FREE FUSER	1	1	1	1
⊙ 57	302HS31390	2HS31390	GEAR Z27R FREE 2	1	1	1	1
58	302HS31400	2HS31400	SPRING FREE DRUM	1	1	1	1
⊙ 59	302HS44010	2HS44010	MOTOR MAIN	1	1	1	1
60	302HS46210	2HS46210	CONN.CORD ASSY CONTROL-F/RCLUTCH	1	1	1	1
61	302HS31430	2HS31430	POLYSLIDER 9.5	1	1	1	1
62	7YCC08B1112+H01	YC058670	CONNECTOR	1	1	1	1
63	7YZM610007++H01	YZ023340	ACCESS.SADDLE	1	1	1	1
101	5MBTPB3008PW++R	B1A63080	BIND T.T SCREW(+)/ M3 X 8 CRFREE P-T				
102	BAB53060	BAB53060	+TP TAP-TITE S SCREW M3X06				
103	5MBTPB3006TW++R	B1A53060	BIND T.T SCREW(+)/ M3 X 6 CRFREE S-T				
104	5MBTPB4010PW++R	B1A64100	BIND T.T SCREW(+)/ M4 X 10 CRFREE P-T				

- Parts with "••" are component parts or sub-assembly with "•" appearing immediately above them.

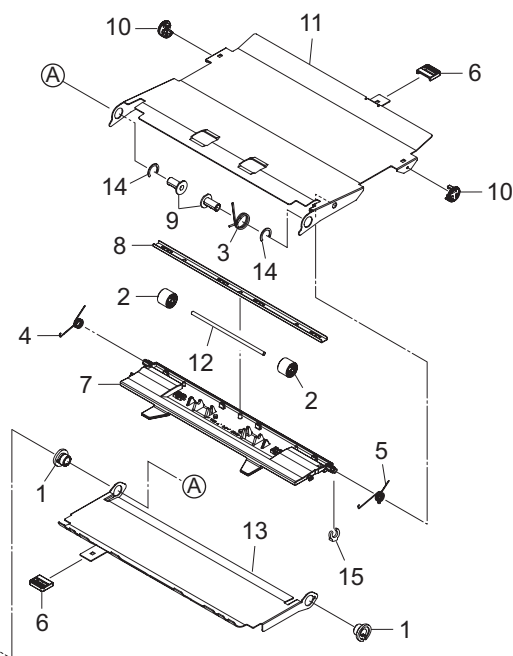
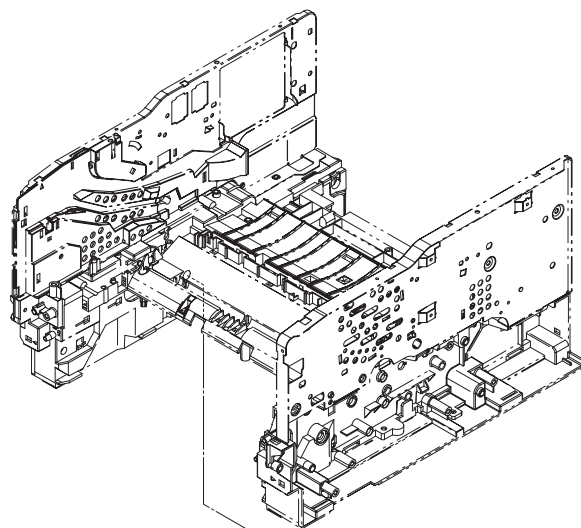
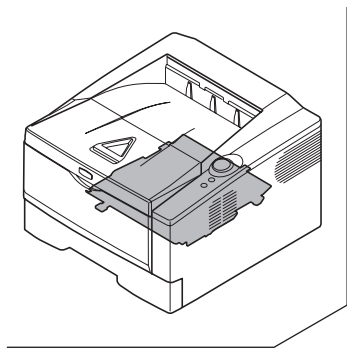


FIG. 10 Duplex Section (Duplex model)

2H5/2HS-1

Ref. No.	Part.No.	Alternative.	Description	Quantity				
				110	120	230	240	
⊙	1	2FM02140	5MVM786XB001	BUSH DU /B-11 FRAME A3	2	2	2	2
	2	2FM02210	5MVM274DN002	PULLEY MID /B-11 FRAME A4	2	2	2	2
	3	2FM02500	5MMW176SD002	SPRING DU R /B-11 FRAME A4	1	1	1	1
	4	2FM02510	5MMW166SD002	SPRING HOLDER L /B-11 FRAME A4	1	1	1	1
	5	2FM02520	5MMW166SD003	SPRING HOLDER R /B-11 FRAME A4	1	1	1	1
	6	2FM02690	5MVX221DG002	LEVER DU /B-11 DU A3	2	2	2	2
	7	2FM21010	5MVX861XB001	HOLDER DU /B-11 DU A1	1	1	1	1
	8	2FM21020	5MML821SD009	STAY DU /B-11 DU A3	1	1	1	1
	9	2FM21030	5MVM276DN017	STOPPER BUSH /B-11 DU A4	2	2	2	2
	10	2FM21050	5MVX173DN001	COLLER DU /B-11 DU A3	2	2	2	2
	11	302HS29020	2HS29020	PLATE COVER DU B	1	1	1	1
	12	302FM02421	2FM02421	SHAFT PULLEY /B-11 FRAME A4	1	1	1	1
	13	302HS29010	2HS29010	PLATE COVER DU	1	1	1	1
	⊙	14	5MBCK9560XSC	D4103700	C STOP RING /X9.5 X 0.6T S-CR	2	2	2
15		5MVX111DN003	2A806250	RING STOPPER /A-49 FEED A4	1	1	1	1

- Parts with "•" are component parts or sub-assemblies of the assembly appearing immediately above them.
- Parts with "⊙" indicate regular maintenance parts.

- Parts with "••" are component parts or sub-assembly with "•" appearing immediately above them.

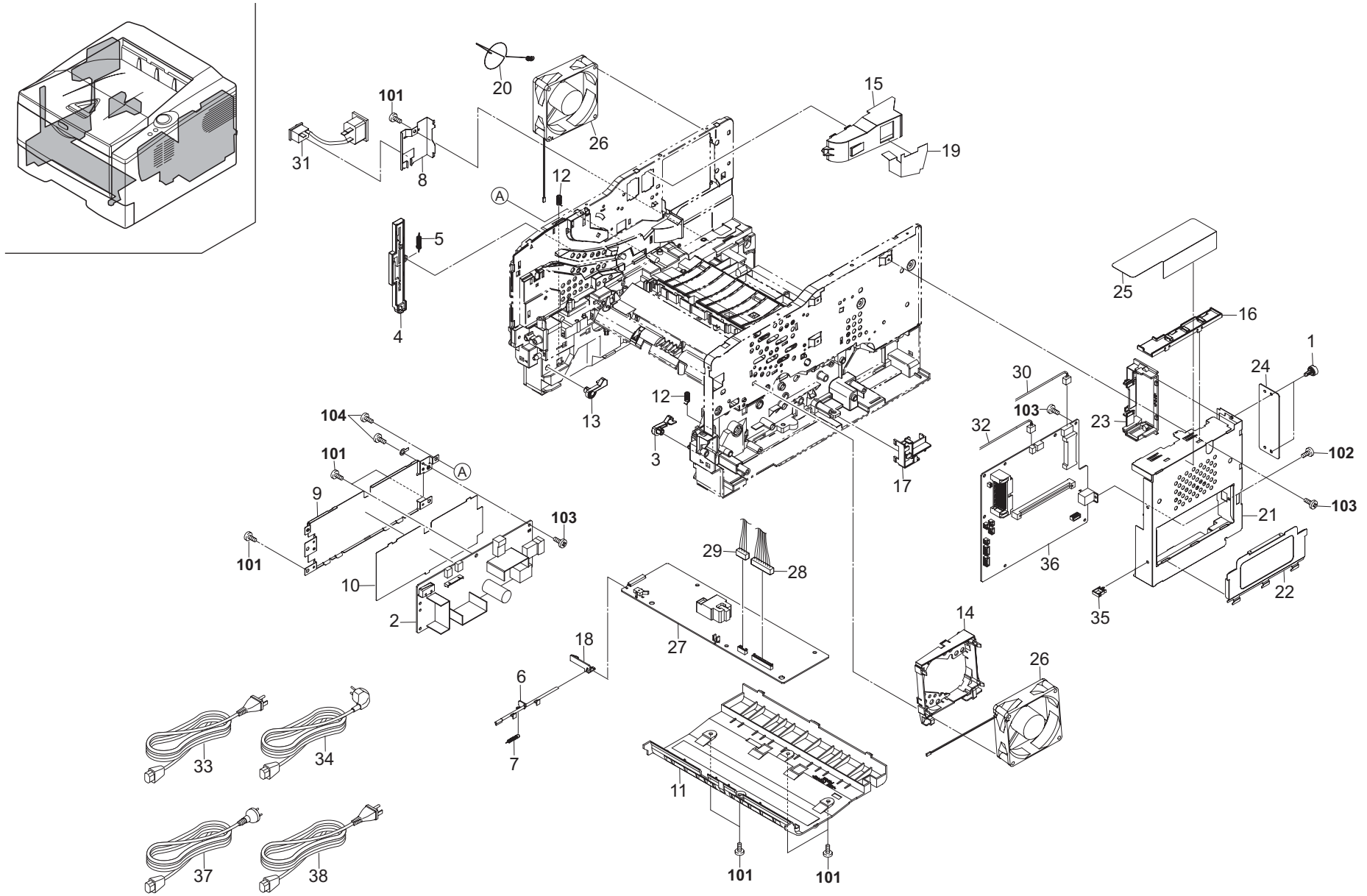


FIG. 11 Electrical Components

2H5/2HS-1

Ref. No.	Part.No.	Alternative.	Description	Quantity			
				110	120	230	240
1	302F939081	2F939081	SCREW BOX	2	2	2	2
2	302HS45020	2HS45020	SWITCHING REGULATOR 120V	1	1		
2	302HS45010	2HS45010	SWITCHING REGULATOR 230V			1	1
3	302HS02070	2HS02070	LEVER LOCK CASSETTE	1	1	1	1
4	302HS02110	2HS02110	LEVER INTERLOCK SW	1	1	1	1
5	302HS02120	2HS02120	SPRING INTERLOCK SW	1	1	1	1
6	302HS02180	2HS02180	PIN CASSETTE	1	1	1	1
7	302HS02190	2HS02190	SPRING PIN CASSETTE	1	1	1	1
8	302HS02200	2HS02200	PLATE MAIN SW	1	1	1	1
9	302HS02210	2HS02210	PLATE POWER SUPPLY	1	1	1	1
10	302HS02240	2HS02240	FILM POWER SUPPLY	1	1	1	1
11	302HS02280	2HS02280	COVER BASE LOW	1	1	1	1
12	302HS02360	2HS02360	SPRING LOCK CASSETTE	2	2	2	2
13	302HS02390	2HS02390	LEVER LOCK CASSETTE L	1	1	1	1
14	302HS02420	2HS02420	BKT FAN R	1	1	1	1
15	302HS02450	2HS02450	BKT FAN L	1	1	1	1
16	302HS02490	2HS02490	COVER CABLE C	1	1	1	1
17	302HS02510	2HS02510	COVER CABLE D	1	1	1	1
18	302HS02560	2HS02560	HOLDER PIN CASSETTE	1	1	1	1
19	302HS02610	2HS02610	SHEET DUCT BKT FAN	1	1	1	1
20	302HS02620	2HS02620	SPRING EARTH FAN	1	1	1	1
21	302HS39011	2HS39011	BOX CONTROLLER	1	1	1	1
22	302HS39021	2HS39021	COVER BOX	1	1	1	1
23	302HS39030	2HS39030	GUIDE OPTION SLOT	1	1	1	1
24	302HS39040	2HS39040	PLATE OPTION	1	1	1	1
25	302HS39050	2HS39050	FILM COVER CABLE	1	1	1	1
26	302HS44050	2HS44050	MOTOR FAN 80	2	2	2	2
27	302HS45030	2HS45030	HIGH VOLTAGE UNIT	1	1	1	1
28	302HS46060	2HS46060	CONN.CORD ASSY CONTROL-H.V.UNIT S0	1	1	1	1
29	302HS46070	2HS46070	CONN.CORD ASSY CONTROL-H.V.UNIT S0	1	1	1	1
30	302HS46090	2HS46090	CONN.CORD ASSY CONTROL-RELAY S03	1	1	1	1
31	302HS46120	2HS46120	CONN.CORD ASSY PWS-INLET S03238		1	1	1
31	302HS46120	2HS46120	CONN.CORD ASSY PWS-INLET S03238	1			
32	302HS46130	2HS46130	CONN.CORD ASSY CONTROL-ERASER S0	1	1	1	1
33	2DC27410	2DC27410	AC CORD 120 ASSY		1		
34	302FV45020	2FV45020	AC CORD ASSY			1	
35	7YZM610008++H01	YZ037940	ACCESS.SADDLE	1	1	1	1
36	302HS94090	2HS94090	P.W.BOARD ASSY CONTROL WITH SOFT WARE(SP) (Duplex model)	1	1	1	1
36	302H594010	2H594010	P.W.BOARD ASSY CONTROL WITH SOFT WARE(SP) (Simplex model)	1	1	1	1
37	302FV45040	2FV45040	AC CORD ASSY				1
38	3065027601	65027601	POWER CORD 110	1			

Ref. No.	Part.No.	Alternative.	Description	Quantity			
				110	120	230	240
101	5MBTPB4010PW++R	B1A64100	BIND T.T SCREW(+)/ M4 X 10 CRFREE P-T				
102	5MBSPB3006NW++R	B1B03060	BIND HEAD SCREW(+)/ M3 X 6 CRFREE				
103	5MBTPB3006TW++R	B1A53060	BIND T.T SCREW(+)/ M3 X 6 CRFREE S-T				
104	5MBTPB4006TW++R	B1A54060	BIND T.T SCREW(+)/ M4 X 6 CRFREE S-T				

- Parts with "*" are component parts or sub-assemblies of the assembly appearing immediately above them.
- Parts with "⊙" indicate regular maintenance parts.

- Parts with "••" are component parts or sub-assembly with "•" appearing immediately above them.

FIG. 12 Parts Package

	Ref. No.	Part.No.	Alternative.	Description	Quantity			
					110	120	230	240
		302HS80020	2HS80020	PACKING ASSY (Duplex model)	1	1	1	1
		302H580010	2H580010	PACKING ASSY (Simplex model)	1	1	1	1

- Parts with "*" are component parts or sub-assemblies of the assembly appearing immediately above them.
- Parts with "⊙" indicate regular maintenance parts.

- Parts with "••" are component parts or sub-assembly with "*" appearing immediately above them.

INDEX

2H5/2HS-1

	Part.No.	Alternative.	Description	Fig.No.
⊙	2BL06380	2BL06380	GEAR Z25 JOINT	5
⊙	2BY20070	5MVX221XN004	BUSH PRESS /49523A0152 A4	8
	2DC27410	2DC27410	AC CORD 120 ASSY	11
	2FM02140	5MVM786XB001	BUSH DU /B-11 FRAME A3	10
	2FM02180	5MVX221DN020	BUSH REGIST C /B-11 FRAME A3	4
	2FM02190	5MVX532DN004	GUIDE CHANGE /B-11 FRAME A3	8
⊙	2FM02210	5MVM274DN002	PULLEY MID /B-11 FRAME A4	10
⊙	2FM02350	5MVG133DN022	GEAR Z22 /B-11 FRAME A4	5
	2FM02500	5MMW176SD002	SPRING DU R /B-11 FRAME A4	10
	2FM02510	5MMW166SD002	SPRING HOLDER L /B-11 FRAME A4	10
	2FM02520	5MMW166SD003	SPRING HOLDER R /B-11 FRAME A4	10
	2FM02690	5MVX221DG002	LEVER DU /B-11 DU A3	10
	2FM06010	5MVX765SH004	GUIDE SIDE L /B-11 CASSETTE A2	3
	2FM06020	5MVX765SH005	GUIDE SIDE R /B-11 CASSETTE A2	3
	2FM20050	5MVX651DN001	LEVER SOLENOID /B-11 FD A3	5
	2FM21010	5MVX861XB001	HOLDER DU /B-11 DU A1	10
	2FM21020	5MML821SD009	STAY DU /B-11 DU A3	10
	2FM21030	5MVM276DN017	STOPPER BUSH /B-11 DU A4	10
	2FM21050	5MVX173DN001	COLLER DU /B-11 DU A3	10
⊙	302A816031	2A816031	BUSH TC R /A-49 FEED A4	4
	302F325010	2F325010	STUD SCREW M3	5
	302F902420	2F902420	LOCK COVER TOP R	2
	302F904120	2F904120	EMBLEM KYOCERA	1
	302F904130	2F904130	TAPE EMBLEM	1
	302F906170	2F906170	JOINT PICKUP A	4
	302F906180	2F906180	JOINT PICKUP B	4
	302F906230	2F906230	PULLEY FEED ASSY	4
	302F906240	2F906240	PULLEY PICKUP ASSY	4
	302F906270	2F906270	SHAFT FEED L	4
	302F906280	2F906280	GEAR FEED Z30H	4
	302F908200	2F908200	LOCK COVER	2,5
	302F908270	2F908270	SP BOTTOM MPF L	2
	302F908310	2F908310	PAD FRICTION MPF	2
	302F909031	2F909031	LEVER BASE CAS REAR	3
	302F909040	2F909040	SPRING BASE CAS REAR	3
	302F909210	2F909210	PAD BOTTOM	3
⊙	302F925080	2F925080	GEAR IDLE A Z29	8
⊙	302F925140	2F925140	GEAR EXIT Z21	8
	302F925340	2F925340	SPRING EXIT	8
	302F925901	2F925901	CAP SPRING EXIT	8
	302F929140	2F929140	BUSH DU	5,9
	302F931350	2F931350	JOINT SHAFT CASSETTE	9
	302F931450	2F931450	SPRING FEED	9
	302F931490	2F931490	BUSH FEED DRIVE	9
	302F939081	2F939081	SCREW BOX	11
	302FM02421	2FM02421	SHAFT PULLEY /B-11 FRAME A4	10
⊙	302FM94020	2FM94020	GEAR CLUTCH ASSY A SP	5
⊙	302FM94030	2FM94030	GEAR CLUTCH ASSY B SP	5
	302FV45020	2FV45020	AC CORD ASSY	11
	302FV45040	2FV45040	AC CORD ASSY	11

	Part.No.	Alternative.	Description	Fig.No.
⊙	302G634070	2G634070	LABEL ENERGY STAR	2
⊙	302G694070	2G694070	SOLENOID ASSY SP	5
	302GJ09111	2GJ09111	GUIDE RETARD	3
	302GJ09120	2GJ09120	HOLDER RETARD	3
⊙	302GR25290	2GR25290	THERMOSTAT M FUSER	8
⊙	302H500010	2H500010	COVER RIGHT ASSY	1
	302H504010	2H504010	COVER RIGHT	1
	302H508011	2H508011	BASE BYPASS	2
	302H508020	2H508020	GUIDE BYPASS L	2
	302H508030	2H508030	GUIDE BYPASS R	2
	302H508040	2H508040	COVER BYPASS UP	2
⊙	302H508051	2H508051	COVER BYPASS LOW	2
	302H528010	2H528010	LEVER STOPPER	5
	302H534070	2H534070	LABEL JAM OPERATION	1
	302H534100	2H534100	LABEL MANUAL FEED	2
	302H580010	2H580010	PACKING ASSY	12
⊙	302H593010	2H593010	DV-140(E)	7
⊙	302H593020	2H593020	DV-142(U)	7
⊙	302H593030	2H593030	DV-144(AO)	7
⊙	302H593040	2H593040	DR-140	9
⊙	302H594010	2H594010	P.W.BOARD ASSY CONTROL WITH SOFTWARE(SP)	11
⊙	302H594020	2H594020	COVER FRONT ASSY (2H5) SP	1
⊙	302H594031	2H594031	FD ASSY (2H5) SP	5
	302HN09190	2HN09190	SPRING FIX	3
	302HN09240	2HN09240	SIZE FIX	3
	302HN25450	2HN25450	BUSH EXIT	8
	302HN29050	2HN29050	BUSH DU	5
⊙	302HN44110	2HN44110	CLUTCH FEED	9
⊙	302HS00010	2HS00010	TRAY MPF ASSY	2
⊙	302HS00030	2HS00030	COVER RIGHT ASSY	1
⊙	302HS01030	2HS01030	P.W.B BOARD ASSY PANEL	1
⊙	302HS01050	2HS01050	P.W.BOARD ASSY /ERASER	2
	302HS01130	2HS01130	P.W.B RFID WITH SOFTWARE	4
⊙	302HS02070	2HS02070	LEVER LOCK CASSETTE	11
⊙	302HS02090	2HS02090	LEVER STOPPER DLP	2
⊙	302HS02100	2HS02100	SPRING STOPPER DLP	2
⊙	302HS02110	2HS02110	LEVER INTERLOCK SW	11
	302HS02120	2HS02120	SPRING INTERLOCK SW	11
	302HS02130	2HS02130	HOLDER MC	2
	302HS02140	2HS02140	PLATE CONTACT MC	2
	302HS02160	2HS02160	SPRING MC	2
⊙	302HS02180	2HS02180	PIN CASSETTE	11
	302HS02190	2HS02190	SPRING PIN CASSETTE	11
	302HS02200	2HS02200	PLATE MAIN SW	11
⊙	302HS02210	2HS02210	PLATE POWER SUPPLY	11
	302HS02240	2HS02240	FILM POWER SUPPLY	11
	302HS02250	2HS02250	SPRING EARTH REG UP	4
	302HS02260	2HS02260	SPRING EARTH REG LOW	4
	302HS02280	2HS02280	COVER BASE LOW	11
	302HS02291	2HS02291	PLATE EARTH DRUM	2

• Parts with "⊙" indicate regular maintenance parts.

Part.No.	Alternative.	Description	Fig.No.
302HS02310	2HS02310	SPRING EARTH DU FEED	2
302HS02330	2HS02330	SPRING EARTH DU PLATE	2
302HS02340	2HS02340	SPRING EARTH RIGHT	4
302HS02350	2HS02350	COVER CABLE B	2
302HS02360	2HS02360	SPRING LOCK CASSETTE	11
302HS02370	2HS02370	SPRING EARTH CASSETTE	9
302HS02380	2HS02380	PLATE PF CONNECTOR	9
⊙ 302HS02390	2HS02390	LEVER LOCK CASSETTE L	11
302HS02410	2HS02410	SPRING EARTH DU MID	4
302HS02420	2HS02420	BKT FAN R	11
302HS02440	2HS02440	SPRING EARTH DLP PLATE	4
302HS02450	2HS02450	BKT FAN L	11
302HS02460	2HS02460	PIN CONTACT BIAS	2
302HS02470	2HS02470	SPRING PIN BIAS	2
302HS02490	2HS02490	COVER CABLE C	11
302HS02500	2HS02500	HOLDER ERASER	2
302HS02510	2HS02510	COVER CABLE D	11
302HS02520	2HS02520	COVER CABLE E	9
302HS02530	2HS02530	COVER CABLE F	9
302HS02540	2HS02540	PIN DRAWER	9
302HS02560	2HS02560	HOLDER PIN CASSETTE	11
302HS02580	2HS02580	SHEET DUCT LSU	2
302HS02590	2HS02590	SHEET DUCT FD	2
302HS02610	2HS02610	SHEET DUCT BKT FAN	11
302HS02620	2HS02620	SPRING EARTH FAN	11
302HS02630	2HS02630	TAPE ERASER	2
⊙ 302HS02650	2HS02650	HOOK PF	2
302HS02660	2HS02660	SHEET FAN L	1
302HS02670	2HS02670	SHEET FAN R	2
302HS02680	2HS02680	SHEET MC CABLE	2
302HS04040	2HS04040	COVER RIGHT	1
302HS04060	2HS04060	COVER DIMM	1
⊙ 302HS04070	2HS04070	COVER RACK	1
302HS04080	2HS04080	COVER PANEL	1
302HS04100	2HS04100	BUTTON ENTER	1
302HS04110	2HS04110	BUTTON CANCEL	1
⊙ 302HS04160	2HS04160	COVER RACK B	1
302HS04170	2HS04170	SHEET TOP COVER	1
302HS06010	2HS06010	FRAME FEED	4
302HS06020	2HS06020	HOLDER FEED	4
302HS06040	2HS06040	GUIDE FEED R	4
302HS06050	2HS06050	PULLEY FEED	4
⊙ 302HS06060	2HS06060	ACTUATOR EMPTY A	4
⊙ 302HS06070	2HS06070	ACTUATOR EMPTY B	4
⊙ 302HS06090	2HS06090	GEAR Z22S FEED	4
302HS06110	2HS06110	SHAFT FEED	9
302HS06120	2HS06120	SPRING ACTUATOR	4
302HS06130	2HS06130	SPRING PULLEY	4
302HS06140	2HS06140	SEAL FRAME FEED	4
302HS06150	2HS06150	SEAL FEED PULLEY	4

Part.No.	Alternative.	Description	Fig.No.
302HS08010	2HS08010	FRAME MPF	4
302HS08020	2HS08020	COVER MPF KM	2
302HS08040	2HS08040	GUIDE TURN MPF	2
302HS08050	2HS08050	BASE MPF	2
302HS08060	2HS08060	TRAY MPF MID	2
302HS08080	2HS08080	SHAFT FEED MPF	4
302HS08100	2HS08100	BRACKET BOTTOM	2
⊙ 302HS08110	2HS08110	ACTUATOR MPF	4
302HS08140	2HS08140	BASE IC PWB	4
⊙ 302HS08160	2HS08160	GEAR Z20S MPF	4
302HS08170	2HS08170	SPRING SEPARATOR	2
302HS08190	2HS08190	SPRING ACTUATOR	4
302HS08210	2HS08210	SPRING EARTH MPF	2
302HS08220	2HS08220	TRAY MPF TOP	2
302HS08230	2HS08230	PLATE EARTH BOTTOM	2
302HS08241	2HS08241	GUIDE MPF R	2
302HS08251	2HS08251	GUIDE MPF L	2
⊙ 302HS08260	2HS08260	ROLLER M/P ASSY	4
302HS08270	2HS08270	SPRING BRACKET	2
302HS08290	2HS08290	FILM SENSOR	4
302HS08300	2HS08300	HOLDER FEED M/P	4
302HS08320	2HS08320	SPRING COVER MPF	2,5
302HS09011	2HS09011	BASE CASSETTE	3
⊙ 302HS09020	2HS09020	COVER CASSETTE KM	3
302HS09040	2HS09040	BASE CASSETTE REAR	3
302HS09070	2HS09070	PAPER INDICATOR	3
302HS09081	2HS09081	CURSOR END	3
302HS09100	2HS09100	LOCK BOTTOM	3
302HS09120	2HS09120	SPRING BOTTOM L	3
302HS09130	2HS09130	SPRING BOTTOM R	3
302HS09140	2HS09140	SPRING LOCK BOTTOM	3
302HS09160	2HS09160	GEAR CASSETTE	3
302HS09170	2HS09170	CAP BOTTOM	3
302HS09180	2HS09180	SPRING RETARD	3
302HS09210	2HS09210	SEAL RETARD WASHER	3
302HS09220	2HS09220	CUT POLYSLIDER 11_8	3
302HS09231	2HS09231	SPONGE CASSETTE	3
302HS19220	2HS19220	TAPE FFC	4
302HS24010	2HS24010	GUIDE PAPER CHUTE	4
302HS24020	2HS24020	GUIDE EARTH	4
⊙ 302HS24040	2HS24040	ROLLER REGIST UP	4
302HS24060	2HS24060	ACTUATOR REGIST	2
302HS24070	2HS24070	SPRING ACTUATOR REG	2
302HS24080	2HS24080	PLATE EARTH HV	2
302HS24110	2HS24110	PLATE ERATH PAPER CHUTE	2
302HS24120	2HS24120	BUSH REGIST	4
302HS24130	2HS24130	BUSH 4 DU ROLL	2
302HS24140	2HS24140	BUSH 6 EW	4
⊙ 302HS24160	2HS24160	ROLLER DU	2
⊙ 302HS24170	2HS24170	ROLLER TRANSFER E	4

• Parts with "⊙" indicate regular maintenance parts.

Part.No.	Alternative.	Description	Fig.No.
302HS24180	2HS24180	SHEET REGIST	4
⊙ 302HS24190	2HS24190	GEAR Z14R REG UP	4
⊙ 302HS24200	2HS24200	GEAR Z21L-Z23L REG LOW	4
⊙ 302HS24210	2HS24210	GEAR Z16L TC	4
⊙ 302HS24220	2HS24220	GEAR Z25R DU FEED	9
⊙ 302HS24230	2HS24230	GEAR Z26L DU MID	9
⊙ 302HS24240	2HS24240	SPRING REGIST R	4
⊙ 302HS24250	2HS24250	BUSH TC R	4
302HS24260	2HS24260	LEVER RELEASE TC L	4
302HS24280	2HS24280	SPRING RELEASE TC L	4
302HS24300	2HS24300	SPRING CONTACT TC	2
302HS24310	2HS24310	SPRING EARTH BRUSH	4
⊙ 302HS24340	2HS24340	ROLLER TRANSFER U	4
⊙ 302HS24350	2HS24350	SPRING REGIST L	4
302HS24360	2HS24360	SPRING REGIST C	4
302HS24390	2HS24390	SPRING TC L	4
302HS24400	2HS24400	SPRING TC R	4
302HS24410	2HS24410	ROLLER REGIST LOW	4
302HS24420	2HS24420	FILM REGIST GUIDE	4
302HS24460	2HS24460	BUSH REGIST R	4
302HS25010	2HS25010	FRAME FUSER LOW	8
302HS25021	2HS25021	FRAME FUSER UP	8
302HS25030	2HS25030	GUIDE EXIT LOW	8
302HS25040	2HS25040	SPRING PRESSURE	8
⊙ 302HS25050	2HS25050	PULLEY EXIT FUSER	8
⊙ 302HS25060	2HS25060	ROLLER EXIT	8
⊙ 302HS25070	2HS25070	GEAR Z18S IDLE	8
302HS25080	2HS25080	PLATE CODE	8
302HS25100	2HS25100	HOLDER SPRING PRESS	8
302HS25110	2HS25110	ACTUATOR FUSER	8
302HS25120	2HS25120	SPRING ACTUATOR	8
302HS25130	2HS25130	SPRING EXIT L	8
302HS25140	2HS25140	PLATE EARTH EXIT	8
302HS25150	2HS25150	SHAFT EXIT	8
302HS25160	2HS25160	PLATE EARTH L	8
302HS25170	2HS25170	PLATE EARTH ROLLER	8
⊙ 302HS25190	2HS25190	THERMISTOR FUSER	8
302HS25200	2HS25200	LEVER FUSER R	8
302HS25210	2HS25210	LEVER FUSER L	8
302HS25220	2HS25220	BUSH FUSER	8
⊙ 302HS25230	2HS25230	ROLLER HEAT	8
⊙ 302HS25240	2HS25240	HEATER LAMP E	8
⊙ 302HS25260	2HS25260	GEAR Z36S HEAT	8
⊙ 302HS25280	2HS25280	BUSH HEAT R	8
⊙ 302HS25300	2HS25300	HEATER LAMP U	8
⊙ 302HS25360	2HS25360	ROLLER PRESS	8
⊙ 302HS25390	2HS25390	HEATER LAMP 110	8
302HS25400	2HS25400	SHEET FUSER	8
302HS25410	2HS25410	TUBE PLATE CODE	8
302HS25440	2HS25440	FILM FUSER LOW	8

Part.No.	Alternative.	Description	Fig.No.
302HS25450	2HS25450	FILM GATE COVER	8
302HS28012	2HS28012	FRAME FD	5
302HS28021	2HS28021	COVER FRAME FD	5
⊙ 302HS28030	2HS28030	ROLLER FD UP	5
⊙ 302HS28040	2HS28040	COVER FD	5
⊙ 302HS28060	2HS28060	GEAR Z21S	5
302HS28070	2HS28070	PULLEY EXIT	5
302HS28110	2HS28110	SPRING EARTH	5
302HS28120	2HS28120	SPRING EXIT	5
⊙ 302HS28131	2HS28131	DISCHARGER FD	5
302HS28140	2HS28140	SPRING PULLEY	5
302HS28150	2HS28150	GUIDE FD SIDE	5
302HS28160	2HS28160	GUIDE FD CENTER	5
⊙ 302HS28170	2HS28170	GEAR FD Z29S	5
302HS29010	2HS29010	PLATE COVER DU	10
302HS29020	2HS29020	PLATE COVER DU B	10
⊙ 302HS31020	2HS31020	PLATE DRIVE	9
302HS31030	2HS31030	DRIVE HOLDER	9
302HS31040	2HS31040	PLATE GEAR DRIVE	9
302HS31050	2HS31050	LEVER LIFT BOTTOM	9
302HS31060	2HS31060	PIN GEAR DRIVE	9
⊙ 302HS31070	2HS31070	GEAR Z42R FREE 2	9
⊙ 302HS31080	2HS31080	GEAR Z42R	9
⊙ 302HS31090	2HS31090	GEAR Z37L FREE	9
⊙ 302HS31100	2HS31100	GEAR Z20L CLUTCH	9
⊙ 302HS31110	2HS31110	GEAR Z58L	9
⊙ 302HS31120	2HS31120	GEAR Z27L CLUTCH	9
⊙ 302HS31130	2HS31130	GEAR Z45R CLUTCH	9
⊙ 302HS31140	2HS31140	GEAR Z35R IDLE	9
⊙ 302HS31150	2HS31150	GEAR Z31L-Z14S	9
⊙ 302HS31170	2HS31170	GEAR Z64R-Z21L	9
⊙ 302HS31180	2HS31180	GEAR Z44R	9
⊙ 302HS31190	2HS31190	GEAR Z17R FREE	9
⊙ 302HS31200	2HS31200	GEAR Z26L FREE	9
⊙ 302HS31210	2HS31210	GEAR Z35S FREE	9
⊙ 302HS31220	2HS31220	GEAR Z42R FREE	9
⊙ 302HS31230	2HS31230	GEAR Z38S MPF	9
⊙ 302HS31240	2HS31240	GEAR Z32L DRUM	9
⊙ 302HS31250	2HS31250	GEAR Z54R-Z24R	9
⊙ 302HS31260	2HS31260	GEAR Z32R	9
⊙ 302HS31270	2HS31270	GEAR Z34L-Z24L	9
⊙ 302HS31281	2HS31281	LIFT BOTTOM	9
302HS31290	2HS31290	DRIVE HOLDER COVER	9
302HS31310	2HS31310	SPRING FREE FUSER	9
302HS31320	2HS31320	SPRING FREE MAG	9
302HS31330	2HS31330	PIN CLUTCH	9
302HS31340	2HS31340	SHAFT CASSETTE	9
302HS31360	2HS31360	PIN HOLDER A	9
302HS31370	2HS31370	PIN HOLDER B	9
302HS31380	2HS31380	SPRING LIFT BOTTOM	9

• Parts with "⊙" indicate regular maintenance parts.

	Part.No.	Alternative.	Description	Fig.No.
⊙	302HS31390	2HS31390	GEAR Z27R FREE 2	9
	302HS31400	2HS31400	SPRING FREE DRUM	9
	302HS31410	2HS31410	SPRING FREE Z37L	9
	302HS31420	2HS31420	EARTH PLATE DRIVE	9
	302HS31430	2HS31430	POLYSLIDER 9.5	9
	302HS34010	2HS34010	LABEL FUSER CAUTION	5
	302HS34020	2HS34020	LABEL FUSER JAM	5
	302HS34030	2HS34030	LABEL OPERATION	3
	302HS34080	2HS34080	LABEL JAM TK OPERATION	1
	302HS34120	2HS34120	LABEL FUSER OPERATION	8
	302HS39011	2HS39011	BOX CONTROLLER	11
	302HS39021	2HS39021	COVER BOX	11
	302HS39030	2HS39030	GUIDE OPTION SLOT	11
	302HS39040	2HS39040	PLATE OPTION	11
	302HS39050	2HS39050	FILM COVER CABLE	11
⊙	302HS44010	2HS44010	MOTOR MAIN	9
⊙	302HS44020	2HS44020	SOLENOID MPF	9
⊙	302HS44050	2HS44050	MOTOR FAN 80	11
⊙	302HS45010	2HS45010	SWITCHING REGULATOR 230V	11
⊙	302HS45020	2HS45020	SWITCHING REGULATOR 120V	11
⊙	302HS45030	2HS45030	HIGH VOLTAGE UNIT	11
	302HS46030	2HS46030	CONN.CORD ASSY CONTROL-PF S03247	9
	302HS46040	2HS46040	CONN.CORD ASSY CONTROL-MAIN MOTOR S03245	9
	302HS46050	2HS46050	CONN.CORD ASSY CONTROL-RFID S03244	4
	302HS46060	2HS46060	CONN.CORD ASSY CONTROL-H.V.UNIT S03240	11
	302HS46070	2HS46070	CONN.CORD ASSY CONTROL-H.V.UNIT S03303	11
	302HS46090	2HS46090	CONN.CORD ASSY CONTROL-RELAY S03243	11
	302HS46100	2HS46100	CONN.CORD ASSY PWS-HEATER(E) S03305	8
	302HS46110	2HS46110	CONN.CORD ASSY PWS-HEATER(U) S03306	8
	302HS46120	2HS46120	CONN.CORD ASSY PWS-INLET S03238	11
	302HS46130	2HS46130	CONN.CORD ASSY CONTROL-ERASER S03252	11
	302HS46140	2HS46140	CONN.CORD ASSY CONTROL-EXITSENSOR S03248	8
	302HS46150	2HS46150	CONN.CORD ASSY CONTROL-MPFSENSOR S03251	4
	302HS46160	2HS46160	CONN.CORD ASSY CONTROL-P.SENSOR S03304	4
	302HS46210	2HS46210	CONN.CORD ASSY CONTROL-F/RCLUTCH S03308	9
	302HS46230	2HS46230	CONN.CORD ASSY PANEL-RELAY S03353	1
	302HS80020	2HS80020	PACKING ASSY	12
⊙	302HS93010	2HS93010	DK-130	6
⊙	302HS93020	2HS93020	DV-130(E)	7
⊙	302HS93040	2HS93040	FK-130(E)	8
⊙	302HS93050	2HS93050	FK-130(U)	8
⊙	302HS93060	2HS93060	DR-130	9
⊙	302HS93070	2HS93070	MC-130	6
⊙	302HS93082	2HS93082	CT-130	3
⊙	302HS93090	2HS93090	LK-130	2
⊙	302HS93100	2HS93100	DV-132(U)	7
⊙	302HS93140	2HS93140	DV-134(AO)	7
⊙	302HS93150	2HS93150	FK-130(TW)	8
⊙	302HS93170	2HS93170	DK-130(ASIA)	6
⊙	302HS94000	2HS94000	PLATE BOTTOM ASSY	3

	Part.No.	Alternative.	Description	Fig.No.
⊙	302HS94010	2HS94010	COVER TOP ASSY	1
⊙	302HS94020	2HS94020	LID TOP ASSY	1
⊙	302HS94030	2HS94030	HOLDER FEED ASSY	4
⊙	302HS94040	2HS94040	SEPARATOR MPF ASSY	2
⊙	302HS94050	2HS94050	PLATE BOTTOM MPF ASSY	2
⊙	302HS94060	2HS94060	HOLDER DC BRUSH ASSY	4
⊙	302HS94080	2HS94080	REGIST LOW KIT	4
⊙	302HS94090	2HS94090	P.W.BOARD ASSY CONTROL WITH SOFTWARE(SP)	11
	302HS94110	2HS94110	ERASER KIT	2
⊙	302HS94120	2HS94120	COVER FRONT ASSY (2HS) SP	1
⊙	302HS94140	2HS94140	COVER TOP B KIT SP	1
⊙	302HS94150	2HS94150	EMPTY SENSOR KIT SP	4
⊙	302HS94160	2HS94160	COVER REAR ASSY SP	5
⊙	302HS94171	2HS94171	FD ASSY (2HS) SP	5
⊙	302HS94241	2HS94241	COVER LEFT ASSY SP	1
⊙	302HS94250	2HS94250	COVER TOP ASSY SP (KMTW)	1
	3065027601	65027601	POWER CORD 110	11
⊙	5AAVR0LL+052	2BR06520	RETARD ROLL ASSY /43487V0005 A4	3
⊙	5AAVSEPR015	2A820360	SEPARATOR ASSY /FS-1000 A4	8
	5MBCK9560XSC	D4103700	C STOP RING /X9.5 X 0.6T S-CR	10
	5MMP141LD002	2A807510	PLATE SIDE GUIDE /A4 CASSETTE A4	3
	5MMS111SL002	2BY20050	NUT FUSER A /FS-1800/3800 A4	8
	5MMW171LD006	2A807530	SPRING STOPPER /A49 CASSETTE A4	3
	5MMW261LD036	2A814570	SPRING TE SENSOR /A-49 DLP A4	4
	5MMW261LD055	2A820350	SPRING SEPARATOR /FS-1000 A4	8
	5MMW261LD067	2FV02270	SPRING LEVER LOCK L	4
	5MMW261LD068	2FV02280	SPRING LEVER LOCK R	4
	5MVG137DN032	2A806720	GEAR MPF /A-49 MPF A4	2
	5MVM273DB005	2A820100	PULLEY EXIT /A-49 FUSER A3	4,5
	5MVS217SN002	2A806280	PAD SOLENOID /FS-1000 A4	5
⊙	5MVX111DN003	2A806250	RING STOPPER /A-49 FEED A4	4,9,10
	5MVX111DN007	2BT11070	STOPPER 3 /2BT1107 A4	5
⊙	5MVX221RB014	2BS03110	FOOT /43307C0007 A4	2
⊙	5MVX431DN005	2FV02100	LEVER LOCK DLP	4
⊙	5MVX441XN001	2BR20180	BUSH HEAT L /43307P0003 A4	8
	5MVX541DG002	2A807191	LEVER REAR /A-49 CASSETTE A3	3
	5MVX541DG003	2A807161	LEVER SIDE /A-49 CASSETTE A3	3
	7BC04060A050H01	BC057930	FLAT A WASHER M6X10X0.5T SUS	8
	7BC06062C020H01	BC045240	POLY SLIDER WASHER M6.2X12X0.2T	9
	7BC460529080H01	BC059590	CUT WASHER 5.2X9.0X0.8T(BLACK)	4
	7NXSG2481+++H01	NX052600	SENSOR OPT.	4,8
	7RHA2H10701+H01	RH043740	M.GLAZE R. 100MJ 1/2W	2
	7YCC08B1112+H01	YC058670	CONNECTOR	9
	7YZM610007++H01	YZ023340	ACCESS.SADDLE	9
	7YZM610008++H01	YZ037940	ACCESS.SADDLE	11
	M2107250	M2107250	BAND,RSG-100(KITAGAWA)	9
				8

• Parts with "⊙" indicate regular maintenance parts.



PF-100

PARTS LIST

Published in February 2008
Rev.1

NOTES

1. Indicate parts number and parts description together with the machine model name when placing an order.

e.g.	Parts Number	Parts Name	Machine Model	Quantity
	303LF02010	BASE	PF-100	1

2. Symbols in the "Parts Number" column.

- Parts with "•" are component parts or sub-assemblies of the assembly appearing immediately above them.

e.g.	Parts Number	Parts Name	Parts Number	Parts Name
	303LF94010	BRACKET FEED ASSY SP	•303J806010	BRACKET FEED
			•303J806020	COVER FEED

- Parts with "⊙" indicate regular maintenance parts.

———— CONTENTS ————

FIG. 1 Paper Feed Section 12
FIG. 2 Paper Feed Section 24
FIG. 3 Parts Package6

• INDEX7

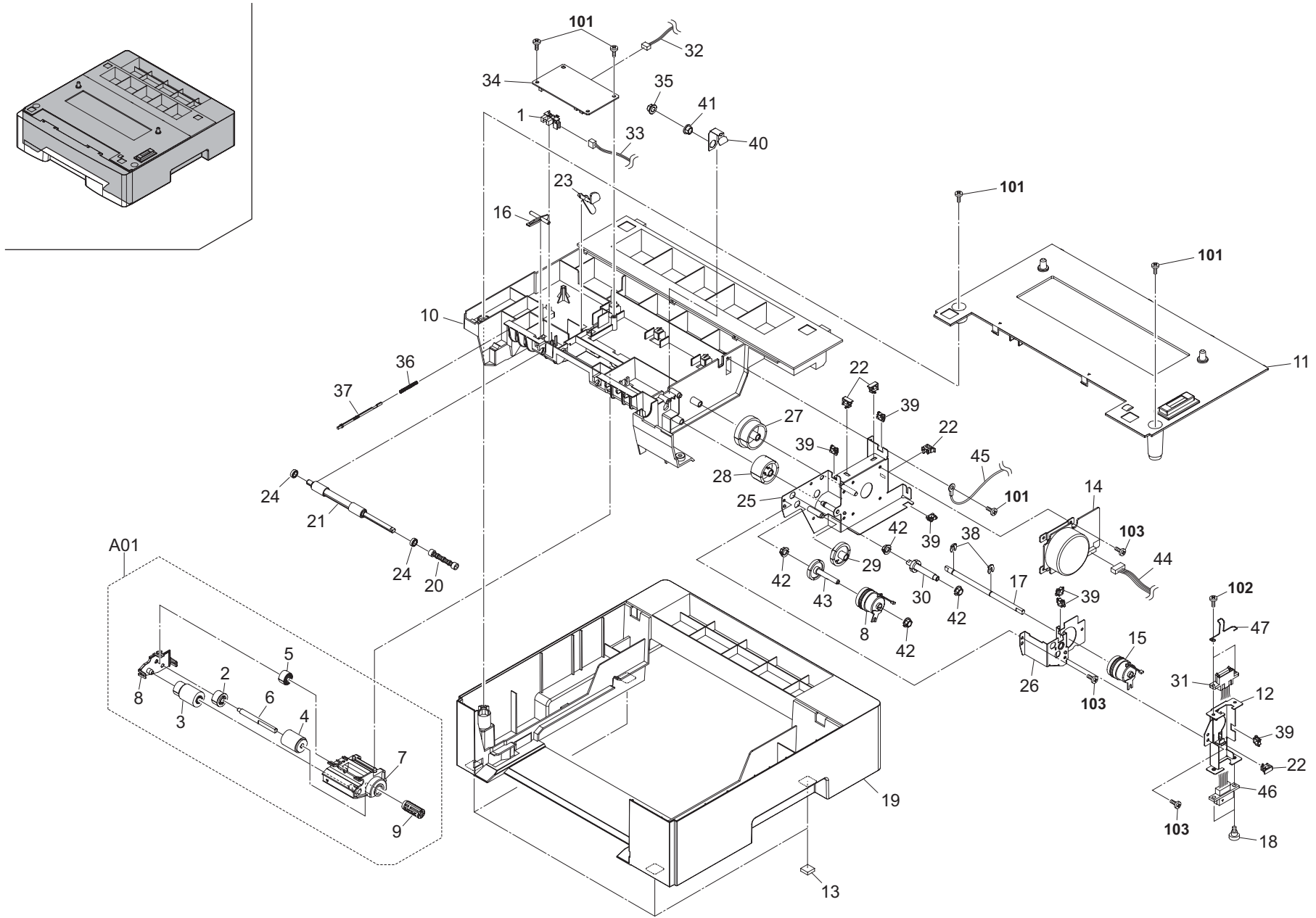


FIG. 1 Paper Feed Section 1

3LF-1

	Ref. No.	Part.No.	Alternative.	Description	Quantity
⊙	1	7NXSG2481+++H01	NX052600	SENSOR OPT.	1
⊙	A01	303LF94010	3LF94010	BRACKET FEED ASSY SP	1
⊙	2	*302GJ06490	2GJ06490	GEAR PICKUP ASSY	1
⊙	3	*302GJ06500	2GJ06500	ROLLER FEED ASSY	1
⊙	4	*302GJ06510	2GJ06510	ROLLER PICKUP ASSY	1
⊙	5	*302GJ06560	2GJ06560	GEAR FEED IDLE Z29S	1
⊙	6	*302GJ06600	2GJ06600	SHAFT PICKUP	1
⊙	7	*303J806010	3J806010	BRACKET FEED	1
⊙	8	*303J806020	3J806020	COVER FEED	1
⊙	9	*303J806080	3J806080	HOLDER RELEASE	1
⊙	10	303LF02020	3LF02020	FRAME TOP	1
⊙	11	303LF02030	3LF02030	COVER TOP	1
⊙	12	303LF02040	3LF02040	MOUNT DRAWER	1
⊙	13	5MVX221RB014	2BS03110	FOOT /43307C0007 A4	4
⊙	14	302GJ44090	2GJ44090	MOTOR FEED	1
⊙	15	302GJ44110	2GJ44110	CLUTCH REG	2
⊙	16	303J806030	3J806030	ACTUATOR	1
⊙	17	303LF06010	3LF06010	SHAFT FEED	1
⊙	18	302HS02540	2HS02540	PIN DRAWER	2
⊙	19	303LF02010	3LF02010	BASE	1
⊙	20	303J806090	3J806090	SHAFT MIDDLE C	1
⊙	21	303J806100	3J806100	ROLLER MIDDLE ASSY	1
⊙	22	7YZM610009+++H01	YZ042980	ACCESS.SADDLE	4
⊙	23	5MVX432DB011	3BW06010	ACTUATOR FEEDER PE /A-49 FEEDER A3	1
⊙	24	303J806140	3J806140	BEARING 106	2
⊙	25	303LF31010	3LF31010	MOUNT MOTOR A	1
⊙	26	303LF31020	3LF31020	MOUNT MOTOR B	1
⊙	27	303LF31030	3LF31030	GEAR Z64L-Z47S	1
⊙	28	303LF31040	3LF31040	GEAR Z36S	1
⊙	29	303LF31050	3LF31050	GEAR Z35S	1
⊙	30	303LF31060	3LF31060	GEAR Z17S MIDDLE	1
⊙	31	303LF46010	3LF46010	CONN.CORD ASSY S03310	1
⊙	32	303LF46040	3LF46040	CONN.CORD ASSY S03313	1
⊙	33	303LF46020	3LF46020	CONN.CORD ASSY S03311	1
⊙	34	303LF01010	3LF01010	P.W.B BOARD ASSY PF CONT WITH SOFTWARE	1
⊙	35	2BG22960	2BG22960	BUSH 6	1
⊙	36	5MMW341LD005	2A802070	SPRING PIN CASSETTE/A-49 FRAME A4	1
⊙	37	5MVT611DW001	3BW02040	PIN FEEDER /A-49 FEEDER A3	1
⊙	38	5MVX111DN003	2A806250	RING STOPPER /A-49 FEED A4	2
⊙	39	7YZM210006+++H01	YZ038000	ACCESS.EDGING	6
⊙	40	303LF06020	3LF06020	PLATE EARTH FEED	1
⊙	41	2BG22970	2BG22970	BUSH 6 EW	1
⊙	42	302F931490	2F931490	BUSH FEED DRIVE	4
⊙	43	303LF31110	3LF31110	GEAR Z30S CLUTCH	1
⊙	44	303LF46030	3LF46030	CONN.CORD ASSY S03312	1
⊙	45	303LF46060	3LF46060	CONN.CORD ASSY S03390	1
⊙	46	303LF46050	3LF46050	CONN.CORD ASSY S03314	1
⊙	47	303LF02111	3LF02111	SPRING EARTH PF	1

	Ref. No.	Part.No.	Alternative.	Description	Quantity
	101	5MBTPB3008PW++R	B1A63080	BIND T.T SCREW(+)/ M3 X 8 CRFREE P-T	
	102	5MBTPB3008TW++R	B1A53080	BIND T.T SCREW(+)/ M3 X 8 CRFREE S-T	
	103	5MBTPB3006TW++R	B1A53060	BIND T.T SCREW(+)/ M3 X 6 CRFREE S-T	

- Parts with "*" are component parts or sub-assemblies of the assembly appearing immediately above them.
- Parts with "⊙" indicate regular maintenance parts.

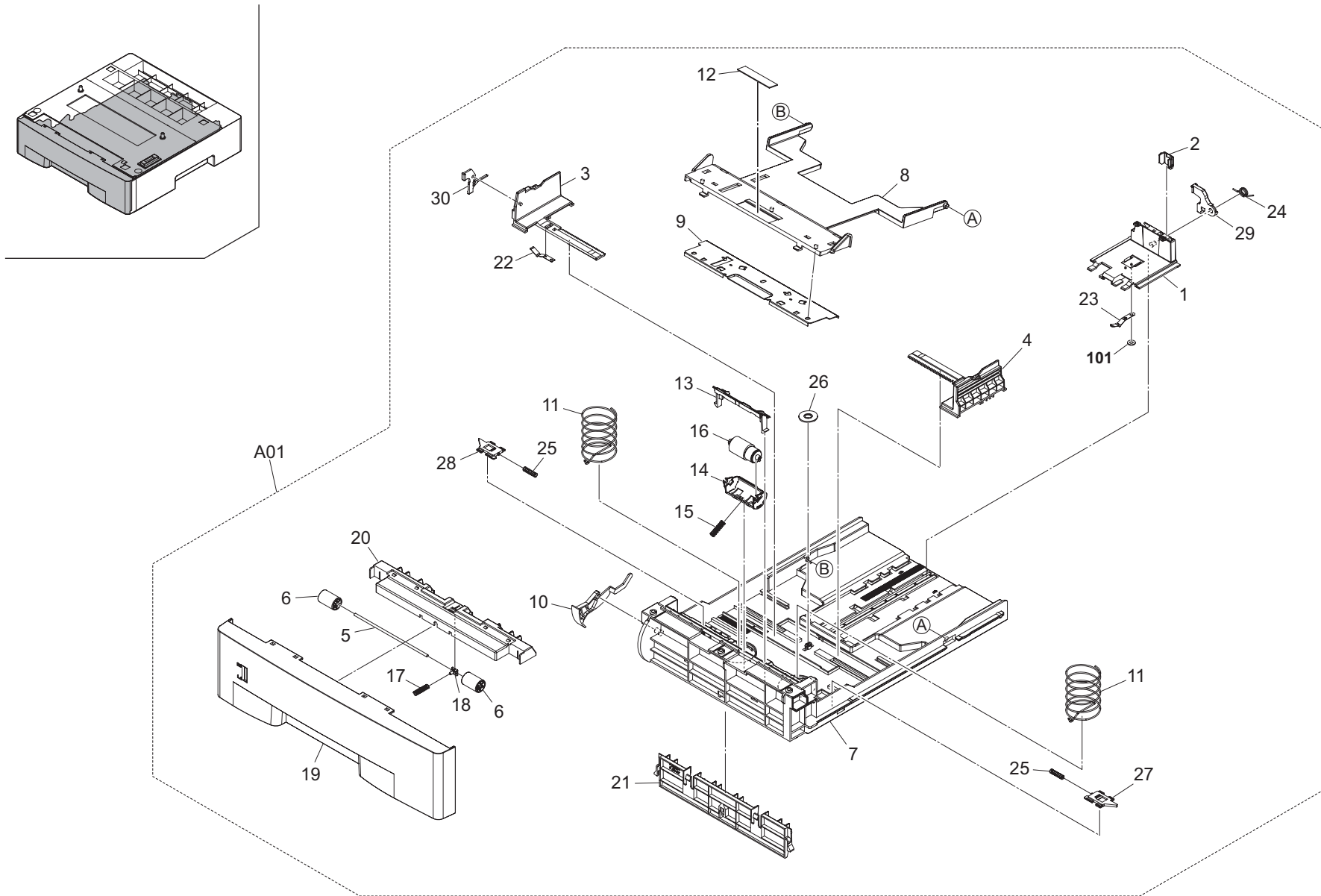


FIG. 2 Paper Feed Section 2

3LF-1

	Ref. No.	Part.No.	Alternative.	Description	Quantity		Ref. No.	Part.No.	Alternative.	Description	Quantity
⊙	A01	303LF93010	3LF93010	CT-131	1		101	5MBNPXX20NSB	D4110200	PUSH NUT / 2 S-BZN	
	1	*2DC07010	2DC07010	STOPPER PAPER	1						
	2	*2DC07020	2DC07020	POSITIONING FOLIO PAPER	1						
	3	*2FM06010	5MVX765SH004	GUIDE SIDE L /B-11 CASSETTE A2	1						
	4	*2FM06020	5MVX765SH005	GUIDE SIDE R /B-11 CASSETTE A2	1						
⊙	5	*302GJ06470	2GJ06470	SHAFT MID MP	1						
	6	*302GJ06480	2GJ06480	PULLEY MID MP	2						
	7	*302GJ09010	2GJ09010	BASE CASSETTE	1						
	8	*302GJ09020	2GJ09020	BOTTOM CASSETTE	1						
	9	*302GJ09030	2GJ09030	PLATE BOTTOM	1						
⊙	10	*302GJ09040	2GJ09040	INDICATOR CASSETTE	1						
⊙	11	*302GJ09050	2GJ09050	SPRING CASSETTE	2						
⊙	12	*302GJ09090	2GJ09090	PAD BOTTOM	1						
	13	*302GJ09111	2GJ09111	GUIDE RETARD	1						
	14	*302GJ09120	2GJ09120	HOLDER RETARD	1						
	15	*302GJ09130	2GJ09130	SPRING RETARD	1						
⊙	16	*302GJ09140	2GJ09140	RETARD ROLLER ASSY	1						
	17	*303J806120	3J806120	SPRING FEED	1						
	18	*303J809040	3J809040	STOPPER SPRING FEED	1						
⊙	19	*303LF09010	3LF09010	COVER CASSETTE	1						
	20	*303LF09020	3LF09020	HOLDER CASSETTE	1						
	21	*303LF09030	3LF09030	GUIDE CASSETTE	1						
	22	*5MMP141LD002	2A807510	PLATE SIDE GUIDE /A49 CASSETTE A4	1						
	23	*5MMP141LD003	2A807520	PLATE STOPPER /A49 CASSETTE A4	1						
	24	*5MMW171LD006	2A807530	SPRING STOPPER /A49 CASSETTE A4	1						
	25	*5MMW251LD045	2A807140	SPRING LOCK /A-49 CASSETTE A4	2						
	26	*5MVG127DN071	2A807050	GEAR CASSETTE /A-49 CASSETTE A4	1						
	27	*5MVX431DW001	2A807121	LOCK CASSETTE R /A-49 CASSETTE A4	1						
	28	*5MVX431DW002	2A807131	LOCK CASSETTE L /A-49 CASSETTE A4	1						
	29	*5MVX541DG002	2A807191	LEVER REAR /A-49 CASSETTE A3	1						
	30	*5MVX541DG003	2A807161	LEVER SIDE /A-49 CASSETTE A3	1						

- Parts with "*" are component parts or sub-assemblies of the assembly appearing immediately above them.
- Parts with "⊙" indicate regular maintenance parts.

FIG. 3 Parts Package

	Ref. No.	Part.No.	Alternative.	Description	Quantity
	1	303LF50010	3LF50010	OUTER CASE	1

- Parts with "*" are component parts or sub-assemblies of the assembly appearing immediately above them.
- Parts with "⊙" indicate regular maintenance parts.

	Part.No.	Alternative.	Description	Fig.No.
⊙	2BG22960	2BG22960	BUSH 6	1
⊙	2BG22970	2BG22970	BUSH 6 EW	1
	2DC07010	2DC07010	STOPPER PAPER	2
	2DC07020	2DC07020	POSITIONING FOLIO PAPER	2
	2FM06010	5MVX765SH004	GUIDE SIDE L /B-11 CASSETTE A2	2
	2FM06020	5MVX765SH005	GUIDE SIDE R /B-11 CASSETTE A2	2
⊙	302F931490	2F931490	BUSH FEED DRIVE	1
⊙	302GJ06470	2GJ06470	SHAFT MID MP	2
	302GJ06480	2GJ06480	PULLEY MID MP	2
⊙	302GJ06490	2GJ06490	GEAR PICKUP ASSY	1
⊙	302GJ06500	2GJ06500	ROLLER FEED ASSY	1
⊙	302GJ06510	2GJ06510	ROLLER PICKUP ASSY	1
⊙	302GJ06560	2GJ06560	GEAR FEED IDLE Z29S	1
	302GJ06600	2GJ06600	SHAFT PICKUP	1
	302GJ09010	2GJ09010	BASE CASSETTE	2
	302GJ09020	2GJ09020	BOTTOM CASSETTE	2
	302GJ09030	2GJ09030	PLATE BOTTOM	2
⊙	302GJ09040	2GJ09040	INDICATOR CASSETTE	2
⊙	302GJ09050	2GJ09050	SPRING CASSETTE	2
⊙	302GJ09090	2GJ09090	PAD BOTTOM	2
	302GJ09111	2GJ09111	GUIDE RETARD	2
	302GJ09120	2GJ09120	HOLDER RETARD	2
	302GJ09130	2GJ09130	SPRING RETARD	2
⊙	302GJ09140	2GJ09140	RETARD ROLLER ASSY	2
⊙	302GJ44090	2GJ44090	MOTOR FEED	1
⊙	302GJ44110	2GJ44110	CLUTCH REG	1
	302HS02540	2HS02540	PIN DRAWER	1
	303J806010	3J806010	BRACKET FEED	1
	303J806020	3J806020	COVER FEED	1
⊙	303J806030	3J806030	ACTUATOR	1
	303J806080	3J806080	HOLDER RELEASE	1
	303J806090	3J806090	SHAFT MIDDLE C	1
⊙	303J806100	3J806100	ROLLER MIDDLE ASSY	1
	303J806120	3J806120	SPRING FEED	2
⊙	303J806140	3J806140	BEARING 106	1
	303J809040	3J809040	STOPPER SPRING FEED	2
⊙	303LF01010	3LF01010	P.W.B BOARD ASSY PF CONT WITH SOFTWARE	1
⊙	303LF02010	3LF02010	BASE	1
	303LF02020	3LF02020	FRAME TOP	1
⊙	303LF02030	3LF02030	COVER TOP	1
	303LF02040	3LF02040	MOUNT DRAWER	1
	303LF02111	3LF02111	SPRING EARTH PF	1
	303LF06010	3LF06010	SHAFT FEED	1
	303LF06020	3LF06020	PLATE EARTH FEED	1
⊙	303LF09010	3LF09010	COVER CASSETTE	2
	303LF09020	3LF09020	HOLDER CASSETTE	2
	303LF09030	3LF09030	GUIDE CASSETTE	2
	303LF31010	3LF31010	MOUNT MOTOR A	1
	303LF31020	3LF31020	MOUNT MOTOR B	1
⊙	303LF31030	3LF31030	GEAR Z64L-Z47S	1

	Part.No.	Alternative.	Description	Fig.No.
⊙	303LF31040	3LF31040	GEAR Z36S	1
⊙	303LF31050	3LF31050	GEAR Z35S	1
⊙	303LF31060	3LF31060	GEAR Z17S MIDDLE	1
⊙	303LF31110	3LF31110	GEAR Z30S CLUTCH	1
⊙	303LF46010	3LF46010	CONN.CORD ASSY S03310	1
	303LF46020	3LF46020	CONN.CORD ASSY S03311	1
	303LF46030	3LF46030	CONN.CORD ASSY S03312	1
	303LF46040	3LF46040	CONN.CORD ASSY S03313	1
⊙	303LF46050	3LF46050	CONN.CORD ASSY S03314	1
	303LF46060	3LF46060	CONN.CORD ASSY S03390	1
	303LF50010	3LF50010	OUTER CASE	3
⊙	303LF93010	3LF93010	CT-131	2
⊙	303LF94010	3LF94010	BRACKET FEED ASSY SP	1
	5MMP141LD002	2A807510	PLATE SIDE GUIDE /A49 CASSETTE A4	2
	5MMP141LD003	2A807520	PLATE STOPPER /A49 CASSETTE A4	2
	5MMW171LD006	2A807530	SPRING STOPPER /A49 CASSETTE A4	2
	5MMW251LD045	2A807140	SPRING LOCK /A-49 CASSETTE A4	2
	5MMW341LD005	2A802070	SPRING PIN CASSETTE/A-49 FRAME A4	1
	5MVG127DN071	2A807050	GEAR CASSETTE /A-49 CASSETTE A4	2
	5MVT611DW001	3BW02040	PIN FEEDER /A-49 FEEDER A3	1
⊙	5MVX111DN003	2A806250	RING STOPPER /A-49 FEED A4	1
	5MVX221RB014	2BS03110	FOOT /43307C0007 A4	1
	5MVX431DW001	2A807121	LOCK CASSETTE R /A-49 CASSETTE A4	2
	5MVX431DW002	2A807131	LOCK CASSETTE L /A-49 CASSETTE A4	2
⊙	5MVX432DB011	3BW06010	ACTUATOR FEEDER PE /A-49 FEEDER A3	1
	5MVX541DG002	2A807191	LEVER REAR /A-49 CASSETTE A3	2
	5MVX541DG003	2A807161	LEVER SIDE /A-49 CASSETTE A3	2
⊙	7NXSG2481+++H01	NX052600	SENSOR OPT.	1
	7YZM210006++H01	YZ038000	ACCESS.EDGING	1
	7YZM610009++H01	YZ042980	ACCESS.SADDLE	1

• Parts with "⊙" indicate regular maintenance parts.

KYOCERA MITA EUROPE B.V.

Hoeksteen 40, 2132 MS Hoofddorp,
The Netherlands
Phone: +31.20.654.0000
Home page: <http://www.kyoceramita-europe.com>
Email: info@kyoceramita-europe.com

KYOCERA MITA NEDERLAND B.V.
Beechavenue 25, 1119RA Schiphol-Rijk
The Netherlands
Phone: +31.20.58.77.200

KYOCERA MITA (UK) LTD
8 Beacontree Plaza
Gillette Way Reading Berks RG2 0BS,
U.K.
Phone: +44.1189.311.500

KYOCERA MITA ITALIA S.p.A.
Via G. Verdi, 89 / 91, 20063 Cernusco s/N
Milano, Italy
Phone: +39.02.92179.1

S.A. KYOCERA MITA BELGIUM N.V.
Hermesstraat 8A, 1930 Zaventem,
Belgium
Phone: +32.2.720.9270

KYOCERA MITA FRANCE S.A.
Parc Les Algorithmes Saint Aubin
91194 GIF-SUR-YVETTE,
France
Phone: +33.1.6985.2600

KYOCERA MITA ESPAÑA S.A.
Edificio Kyocera, Avda de Manacor No. 2,
28290 Las Matas (Madrid),
Spain
Phone: +34.91.631.8392

KYOCERA MITA FINLAND OY
Kirvesmiehenkatu 4, 00880 Helsinki,
Finland
Phone: +358.9.4780.5200

KYOCERA MITA (SCHWEIZ)
Hohlstrasse 614, 8048 Zürich
Switzerland
Phone: +41.1.908.4949

KYOCERA MITA DEUTSCHLAND GMBH
Otto-Hahn-Str. 12 D-40670 Meerbusch,
Germany
Phone: +49.2159.918.0

KYOCERA MITA GMBH AUSTRIA
Eduard-Kittenberger-Gasse 95,
1230 Wien,
Austria
Phone: +43.1.86338.210

KYOCERA MITA SVENSKA AB
Esbogatan 16B 164 75 Kista,
Sweden
Phone: +46.8.546.55000

KYOCERA MITA NORGE
Postboks 150 Oppsal, NO 0619 Oslo
Olaf Helssetsvei 6, NO 0694 Oslo,
Norway
Phone: +47.22.62.73.00

KYOCERA MITA DANMARK A/S
Ejby Industrivej 1, DK-2600 Glostrup,
Denmark
Phone: +45.5687.1100

KYOCERA MITA PORTUGAL LDA.
Rua do Centro Cultural, 41 (Alvalade) 1700-106 Lisbon,
Portugal
Phone: +351.21.842.9100

KYOCERA MITA SOUTH AFRICA (PTY) LTD.
527 Kyalami Boulevard,
Kyalami Business Park Midrand,
South Africa
Phone: +27.(0)11.540.2600

KYOCERA MITA AMERICA, INC.

Headquarters:
225 Sand Road,
Fairfield, New Jersey 07004-0008,
U.S.A.
Phone: (973) 808-8444

KYOCERA MITA AUSTRALIA PTY. LTD.
Level 3, 6-10 Talavera Road, North Ryde,
N.S.W. 2113 Australia
Phone: (02) 9888-9999

KYOCERA MITA NEW ZEALAND LTD.
1-3 Parkhead Place, Albany
P.O. Box 302 125 NHPC, Auckland,
New Zealand
Phone: (09) 415-4517

KYOCERA MITA (THAILAND) CORP., LTD.
9/209 Ratchada-Prachachem Road,
Bang Sue, Bangkok 10800, Thailand
Phone: (02) 586-0320

KYOCERA MITA SINGAPORE PTE LTD.
121 Genting Lane, 3rd Level,
Singapore 349572
Phone: 67418733

KYOCERA MITA HONG KONG LIMITED
11/F., Mita Centre,
552-566, Castle Peak Road,
Tsuen Wan, New Territories,
Hong Kong
Phone: 24297422

KYOCERA MITA TAIWAN Corporation.
7F-1~2, No.41, Lane 221, Gangchi Rd.
Neihu District, Taipei, Taiwan, 114. R.O.C.
Phone: (02) 87511560

KYOCERA MITA Corporation

2-28, 1-chome, Tamatsukuri, Chuo-ku
Osaka 540-8585, Japan
Phone: (06) 6764-3555
<http://www.kyoceramita.com>

KYOCERA MITA AMERICA, INC.

Headquarters:

225 Sand Road,
Fairfield, New Jersey 07004-0008
TEL : (973) 808-8444
FAX : (973) 882-6000

New York Branch:

1410 Broadway 23rd floor
New York, NY 10018
TEL : (917) 286-5400
FAX : (917) 286-5402

Northeastern Region:

225 Sand Road,
Fairfield, New Jersey 07004-0008
TEL : (973) 808-8444
FAX : (973) 882-4401

Midwestern Region:

201 Hansen Court Suite 119
Wood Dale, Illinois 60191
TEL : (630) 238-9982
FAX : (630) 238-9487

Western Region:

14101 Alton Parkway,
Irvine, California 92618-7006
TEL : (949) 457-9000
FAX : (949) 457-9119

Southeastern Region:

1500 Oakbrook Drive,
Norcross, Georgia 30093
TEL : (770) 729-9786
FAX : (770) 729-9873

Southwestern Region:

2825 West Story Road,
Irving, Texas 75038-5299
TEL : (972) 550-8987
FAX : (972) 252-9786

National Operation Center & National Training Center:

2825 West Story Road,
Irving, Texas 75038-5299
TEL : (972) 659-0055
FAX : (972) 570-5816

Latin America Division:

8240 N.W. 52nd. Terrace Dawson Building,
Suite 108 Miami, Florida 33166
TEL : (305) 421-6640
FAX : (305) 421-6666

KYOCERA MITA CANADA, LTD.

6120 Kestrel Road, Mississauga,
Ontario L5T 1S8, Canada
TEL : (905) 670-4425
FAX : (905) 670-8116

KYOCERA MITA MEXICO, S.A. DE C.V.

Av. 16 de Septiembre #407
Col. Santa Inés,
Azcapotzalco México,
D.F. 02130, México
TEL : (55) 5383-2741
FAX : (55) 5383-7804

©2008 KYOCERA MITA Corporation

<http://www.kyoceramita.com>

 **KYOCERA** is a trademark of Kyocera Corporation

Printed in U.S.A.