



ACTi
Connecting Vision

Quick Installation Guide

MNR-320P
MNR-330P

16-Channel Transportation Standalone NVR

BEFORE YOU START

Thank you for purchasing ACTi Transportation Standalone Network Video Recorder (MNR). This guide contains all the information you need to quickly set up the MNR system via local display interface.

For detailed instructions on installation and operation, please search for the product manuals on the <http://www.acti.com/downloadcenter>.

The items below are required for installation:

- Monitor (with HDMI or VGA input and the cable)
- USB mouse
- USB keyboard
- Network cameras
- Network cables
- POE switch
- One ACTi-certified 2.5-inch SATA hard disk

Find the certified disk models at <http://www.acti.com/hddselector>

1 UNPACK

This package includes the following items:

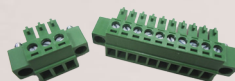
MNR Unit x 1



GPS Antenna x 1



Terminal Block x 2



Disk Screws



Warranty Card x 1

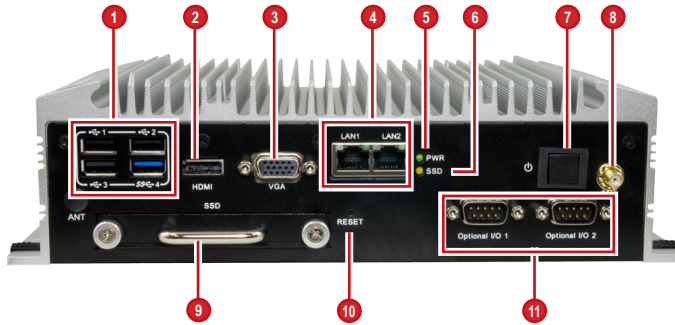


Quick Installation Guide x 1



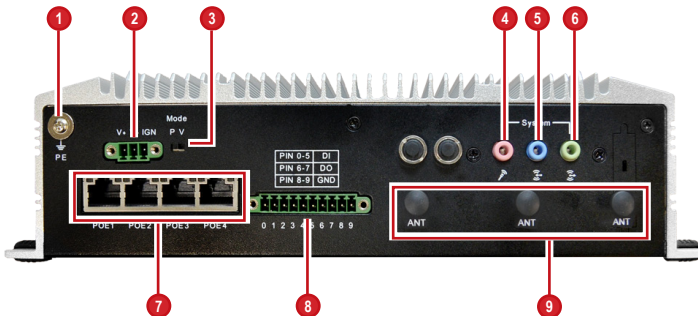
2 AT A GLANCE

FRONT PANEL



- 1 USB Ports *
MNR-320P: USB 2.0 x 3, USB 3.0 x 1
MNR-330P: USB 2.0 x 2, USB 3.0 x 2
- 2 HDMI Port
- 3 VGA Port
- 4 LAN Ports
- 5 Power LED
- 6 Hard Disk Activity LED
- 7 Power Button
- 8 GPS Antenna Connector
- 9 Hard Disk Bay
- 10 Reset Button
- 11 I/O Ports

REAR PANEL



- 1 Ground Screw
- 2 Power Connector
- 3 Power Source Switch
P: Standard power outlet source
V: Vehicle power source
- 4 Audio Mic In
- 5 Audio Line In
- 6 Audio Out
- 7 Power Over Ethernet Ports
- 8 Terminal Block Connector
- 9 Antenna Connectors
(optional)

3 INSTALL THE HARD DISK

MAKE SURE THE UNIT IS NOT CONNECTED TO POWER before installing the hard disk.

Step 1

Loosen the two (2) thumbscrews.



Step 2

Pull out the tray.



Step 3

Mount the disk on the tray.



Step 4

Secure the disk using the four (4) supplied screws.



Step 5

Slide the tray back into the slot.



Step 6

Tighten the two (2) thumbscrews to secure the tray.



4 INSTALL THE GPS MODULE

The GPS antenna is bundled with the MNR package.

Step 1

Attach the GPS module connector to the antenna connector on the MNR.



Step 2

Tighten the connectors to secure the GPS antenna.



Step 3

Place the GPS antenna on a flat surface.



4 INSTALL OPTIONAL MODULES

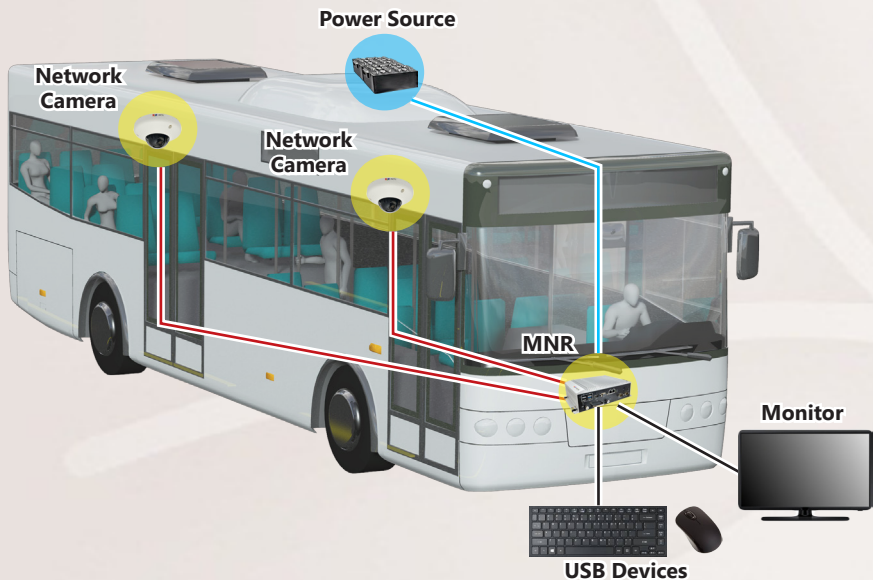
To fulfill certain project requirements, contact ACTi sales representatives to purchase the following optional modules:

- Wireless Module - provides Wi-Fi connectivity
- 3G / 4G Module - provides 3G / 4G connectivity

Refer to the instructions in the Installation Guide to install the optional modules and use the software utilities provided to complete the initial setup.

5 CONNECT THE DEVICES

The example below displays a local network consisting of an MNR, network cameras and required peripherals.



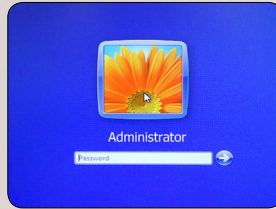
1. Use at least four (4) screws appropriate for the surface where you will install the MNR in the vehicle.
2. Install the network camera(s).
3. Connect the camera(s) to the PoE port of the MNR using network cables.

NOTE: The total power budget of the MNR is 30.8 watts. Note that if there are four (4) cameras connected, each PoE port provides 7 watts power to the camera. Check the camera specifications to ensure the camera power input matches the MNR.

4. Connect the USB devices and other optional input/output devices to the MNR.
5. Connect the MNR to the power source.

6 START UP

1. On the front panel, press the **POWER SWITCH** to turn on the MNR.
2. On the **Windows** log on screen, type "123456" to enter the Windows system.



NOTE: To assign a static IP address to the MNR, after entering Windows operating system, configure the network settings in **Windows Network and Sharing Center**.

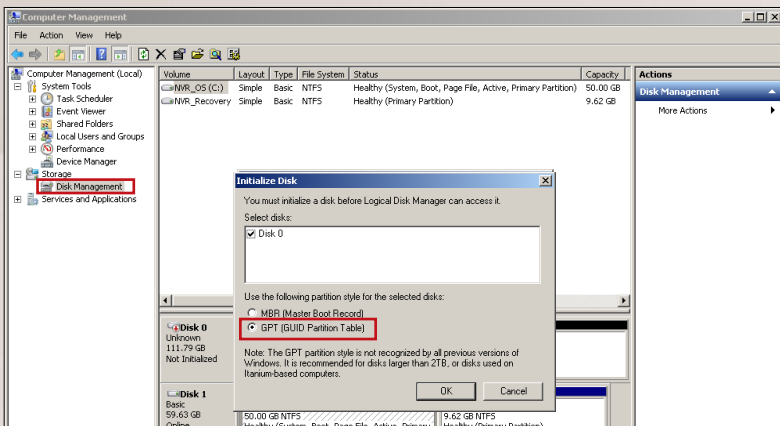
7 INITIALIZE THE HARD DISK

After installing the hard disk, use the **Windows Disk Management** to initialize the disk to enable MNR to save the video recordings.

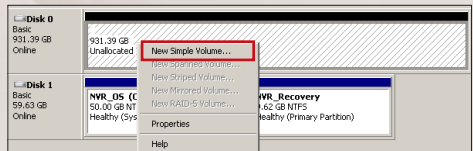
1. In **Windows Search Box**, search and enter "**Computer Management**".



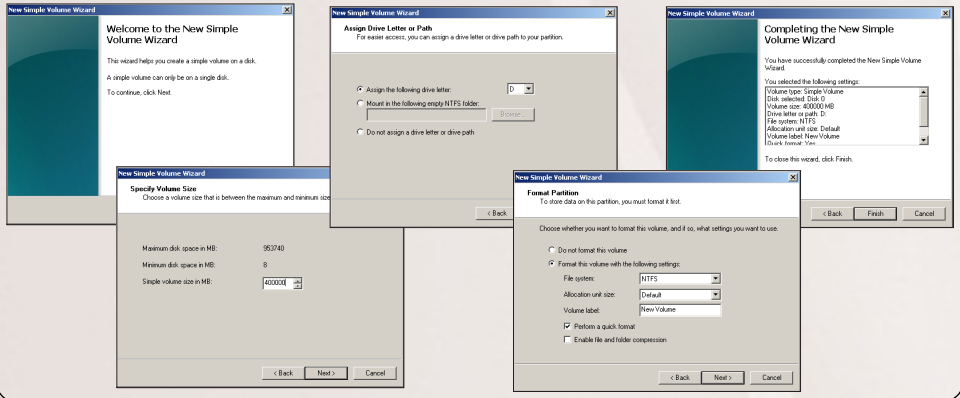
2. Select **Disk Management**. The **Initialize Disk** pop-up window will appear.
3. Select **GPT** as the partition style, and then click **OK**.




4. Right-click on the initialized disk and select **New Simple Volume**.

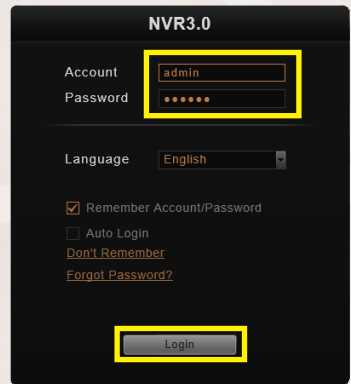


5. Follow the wizard to create the disk volume, assign the drive letter and volume label. Repeat steps 4 and 5 to create other volumes, as needed.



8 LOGIN

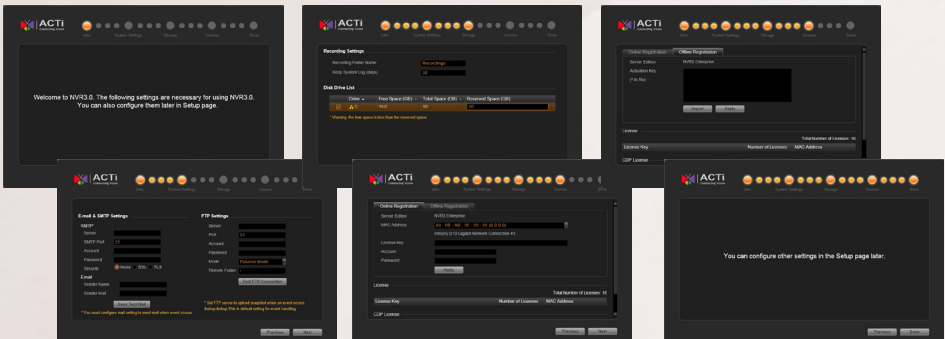
1. On **Windows** Desktop, double-click  to enter the NVR interface.
2. Input the default account and password to log in.




Account: admin
Password: 123456

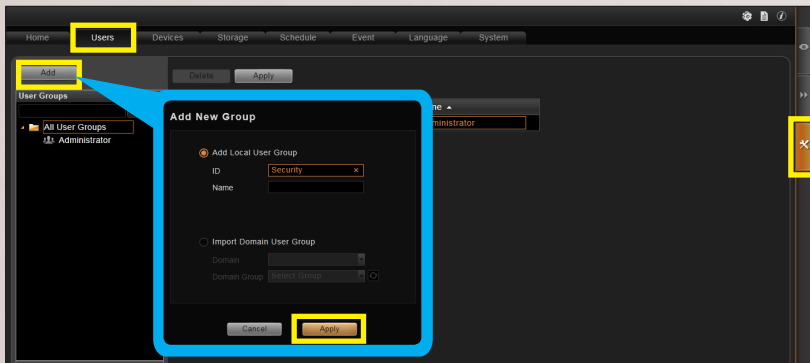
"123456" is the default password of the NVR administrator's user account. For security reasons, please remember to change it.

For first-time use, follow the Installation Wizard to start configuring the settings or skip this process and manually configure the settings in the **Setup** page.

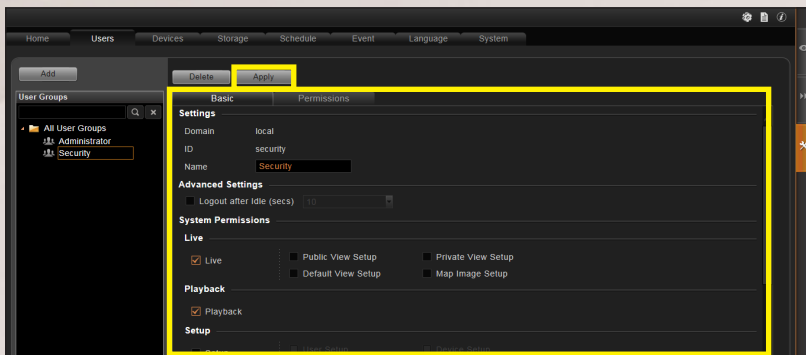


On the NVR screen, click the **Setup**  button to go to the **Setup** page. Then click the **Users** tab. By default, there is an Administrator group wherein all permission levels are enabled. To limit NVR access for a certain group of users, create user groups.

1. Select **User Groups**, click **Add** to start adding a new user group.
2. Input group **ID** and click **Apply**.



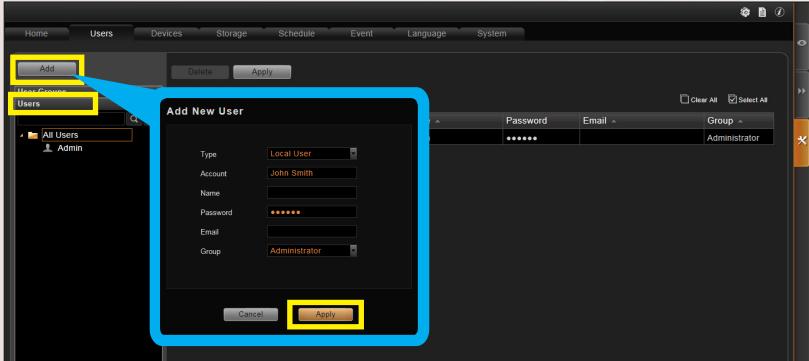
3. Configure the user group **Permissions** and click **Apply**.



10 ADD USERS

After creating user groups, create individual users.

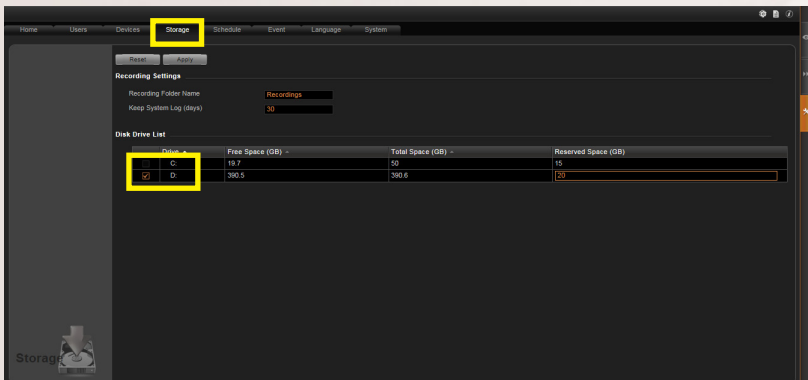
1. On the left panel, click the **Users** title bar, click **Add** to start adding a new user.
2. Input the user's **Account**, **Password**, **Email** address and select its **User Group**, and then click **Apply**.



11 SELECT STORAGE DRIVES

Select the disk where the MNR will save the recordings.

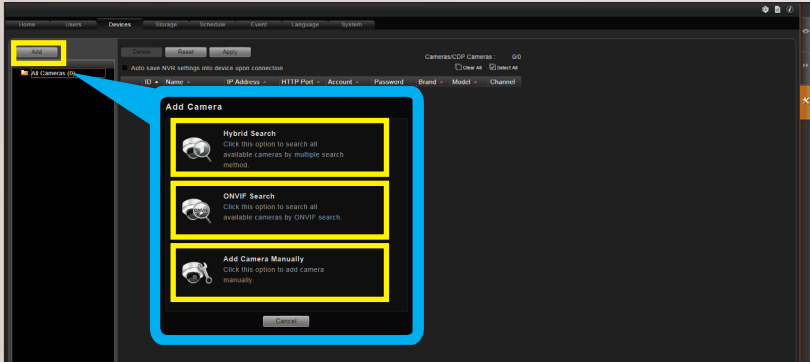
1. On the **Setup** page, click the **Storage** tab.
2. On **Disk Drive List**, select a storage drive.



3. Click **Apply**.

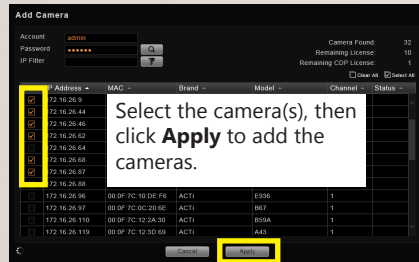
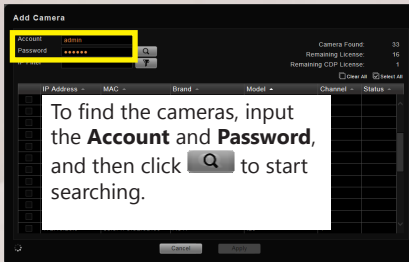
12 ADD CAMERAS

1. On the **Setup** page, click the **Devices** tab.
2. Click **Add**.
3. Choose a search method based on your network environment and camera brand.



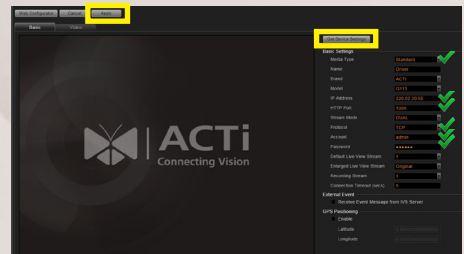
To Search Cameras in the Local Area Network (LAN)

- Click **Hybrid Search** to auto-search the network for ACTi cameras.
- Click **Search ONVIF Cameras** to search for ONVIF-compliant cameras of any brand.



To Add Cameras Manually

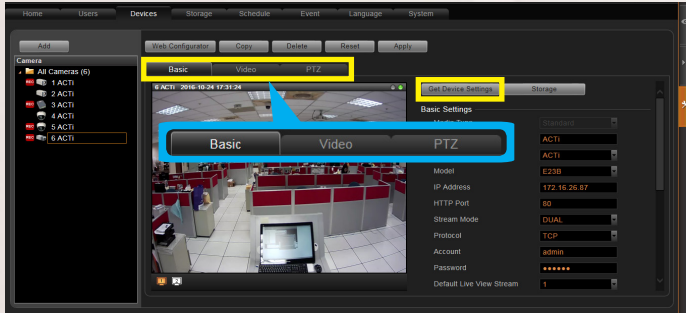
1. Click **Add Camera Manually**.
2. Fill in **Media Type, Protocol, IP Address, HTTP Port, Account** and **Password**.
3. Click **"Get Device Settings"** and then **"Apply"**.



13 CONFIGURE CAMERA SETTINGS

1. On the **Setup** page, click the **Devices** tab.
2. Choose the camera from the **Camera** list on the left panel.
3. Select **Basic**, **Video**, **PTZ**, or **Preset Tour** tab to configure related settings.

NOTE: The available tabs vary depending on the camera model.



14 SET RECORDING SCHEDULE

The recording service automatically starts full-time recording for a newly added camera. You can modify the recording schedule to suit your needs.

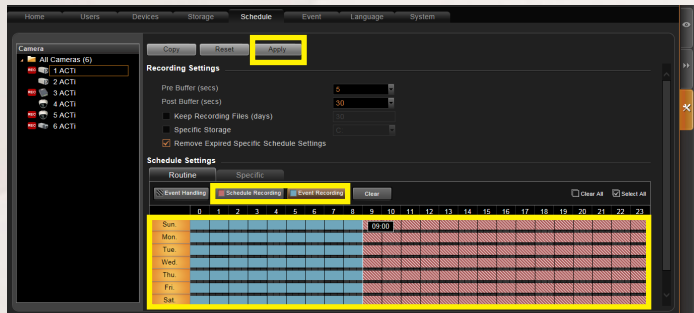
1. On the **Setup** page, click the **Schedule** tab.
2. Select the camera from the **Camera** list on the left panel.
3. Choose a recording mode: **Schedule Recording** or **Event Recording**

- **Schedule Recording:** Records video continuously during the scheduled session.
- **Event Recording:** Records video based on specific triggers such as when motion is detected by the camera.




4. Drag on the time table to define the time session.
5. Click **Apply**.

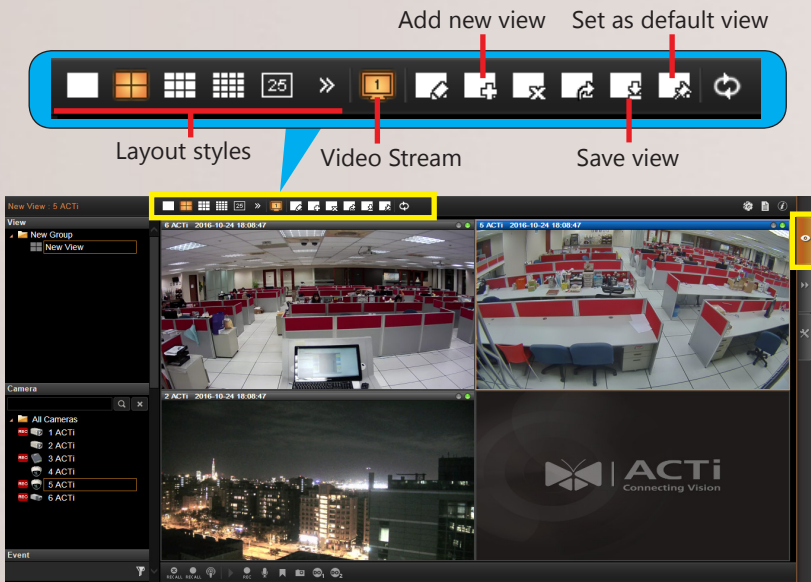
Note

If you have any question during the system installation, please feel free to contact our engineers via **ACTi Customer Help Desk** platform at <http://www.acti.com/CHD>.



15 CUSTOMIZE LIVE VIEW

1. Click the **View**  button to go the **Live View** page.
2. From the **Camera** list, drag a channel to a layout window. Repeat this process to add other channels.
3. On the **View Toolbar**, click  to save the layout style and channel view.
4. Type a view group.
5. To set the current view as the default, click .



16 VIEW AND RECORD



To check live streaming of all channels, go to Live View page, double-click on **All Cameras** on the **Camera** list.



To check the recording, go to the **Playback** page, and then select (double-click) a view from the **View List** or a camera from the **Camera** list. Drag on the time bar to see the recorded video.

Due to continuous product improvements, some contents may have changed from the time this documentation was printed. You can download the latest user documentation, which shall prevail over the printed version provided in the package, from <http://www.acti.com/downloadcenter>.