

Quick Installation Guide

ENR-220P

4-Channel 2-Bay Desktop Standalone NVR with 4-port PoE connectors

ENR-221

9-Channel 2-Bay Desktop Standalone NVR

ENR-221P

9-Channel 2-Bay Desktop Standalone NVR with 8-port PoE connectors

ENR-222

16-Channel 2-Bay Desktop Standalone NVR

BEFORE YOU START

Thank you for purchasing ACTi ENR Standalone Network Video Recorder. This guide contains all the information you need to quickly set up the device via local display interface.

For detailed instructions on installation and operation, please search for the product manuals on <http://www.acti.com/downloadcenter>.

The items below are required for installation:

- Network cameras
- Monitor (with HDMI input and the cable)
- Network cables
- Network switch
- At least one ACTI-certified 3.5 inch SATA hard disk

Check the list of certified models in <http://www.acti.com/hddselector>

If you have any problems during installation, please contact us via <https://www.acti.com/CHD> or US/Canada toll-free number: 1-866-410-2284 (ACTI)

1 UNPACK

This package includes the following items:

- ENR Unit
- Power adapter
- Power cord
- Socket converter
- Hard disk screw pack
- USB mouse
- Terminal blocks x 2
- Quick Installation Guide
- Warranty Card

2 AT A GLANCE

FRONT PANEL

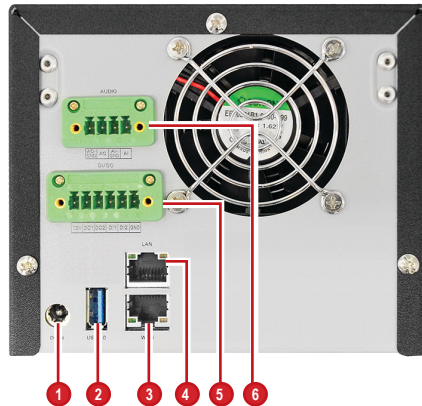
- 1 HDMI Output
- 2 USB 2.0 Ports x 2
- 3 LED Indicators
 - Power LED (blue)
 - System LED (orange)
 - Hard Disk LED (green)
- 4 Reset Button
- 5 Power Button



REAR PANEL

ENR-221 & ENR-222

- 1 Power Connector
- 2 USB 3.0 Port
- 3 WAN Port
- 4 LAN Port
- 5 Digital Input / Output
- 6 Audio Input / Output

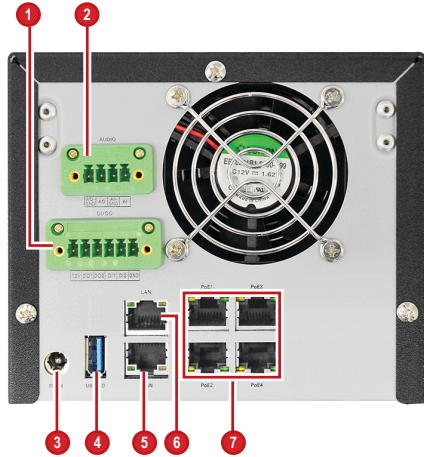


2 AT A GLANCE

REAR PANEL

ENR-220P

- 1 Digital Input / Output
- 2 Audio Input / Output
- 3 Power Connector
- 4 USB 3.0 Port
- 5 WAN Port
- 6 LAN Port
- 7 Power Over Ethernet (PoE)
(PoE) x 4 ports

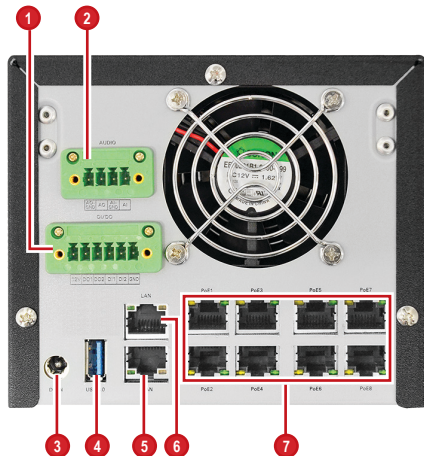


2 AT A GLANCE

REAR PANEL

ENR-221P

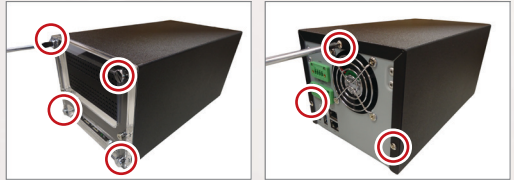
- 1 Digital Input / Output
- 2 Audio Input / Output
- 3 Power Connector
- 4 USB 3.0 Port
- 5 WAN Port
- 6 LAN Port
- 7 Power Over Ethernet (PoE)
(PoE) x 8 ports



3 INSTALL HARD DISK DRIVE

Step 1

Remove the front panel screws, and then remove the back panel screws.



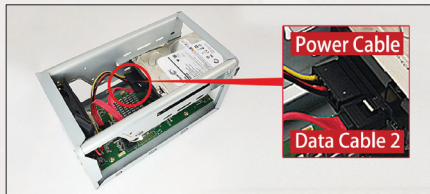
Step 2

Slide the case backwards until it stops, and then lift it up to remove.



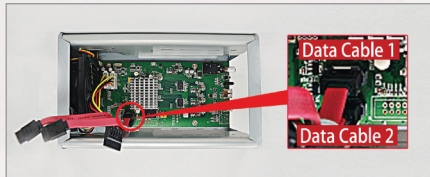
Step 3

Insert **Disk 2** in the lower bay, connect a SATA **Power Cable** and SATA **Data Cable 2** to the hard disk.



Step 4

Make sure you connect the correct data cable to the corresponding disk.



Step 5

Lock **Disk 2** using one disk screw on each side of the hard disk bay.

Repeat Step 3~ Step 5 to install **Disk 1** into the upper bay.

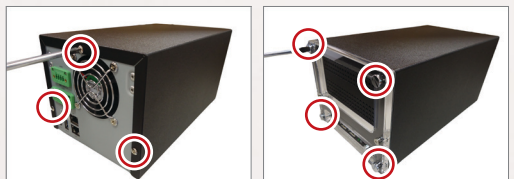


Step 6

Install the case back in reverse order of removal step (Step 2); slide the case cover back until it clicks into place.



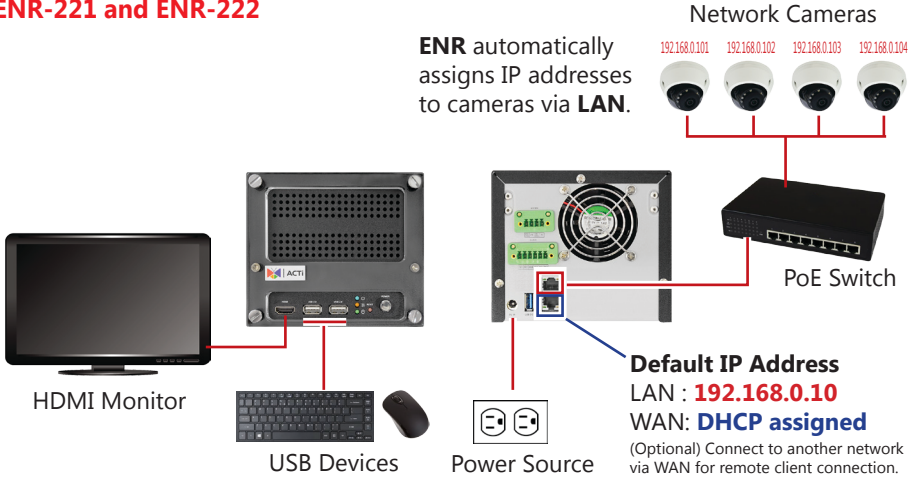
Lock the back panel with the screws. Do the same with the front panel.



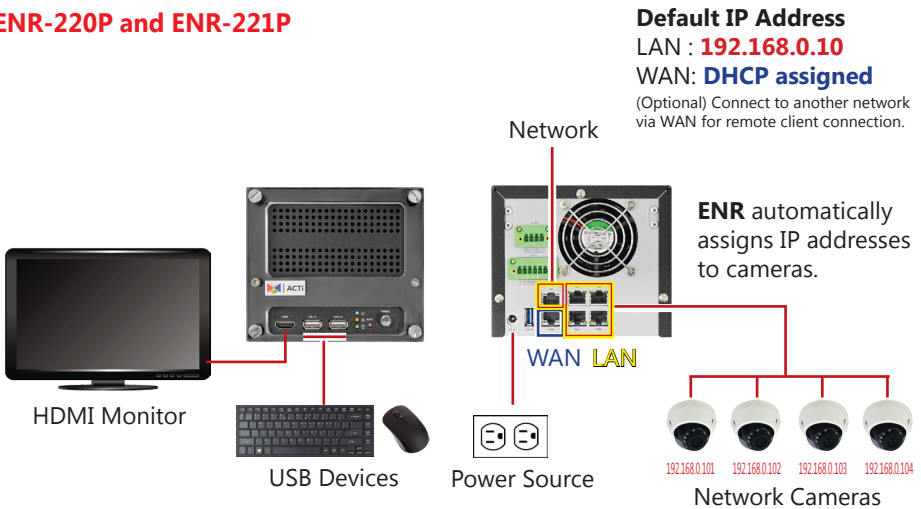
4 CONNECTIONS

The example below displays a network with ENR and basic required peripherals to start using the device.

ENR-221 and ENR-222



ENR-220P and ENR-221P



5 LOGIN

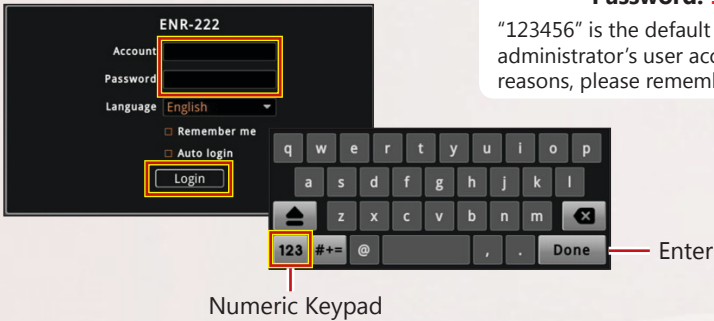
1. On the front panel, press the **POWER BUTTON** to turn on the **ENR**.



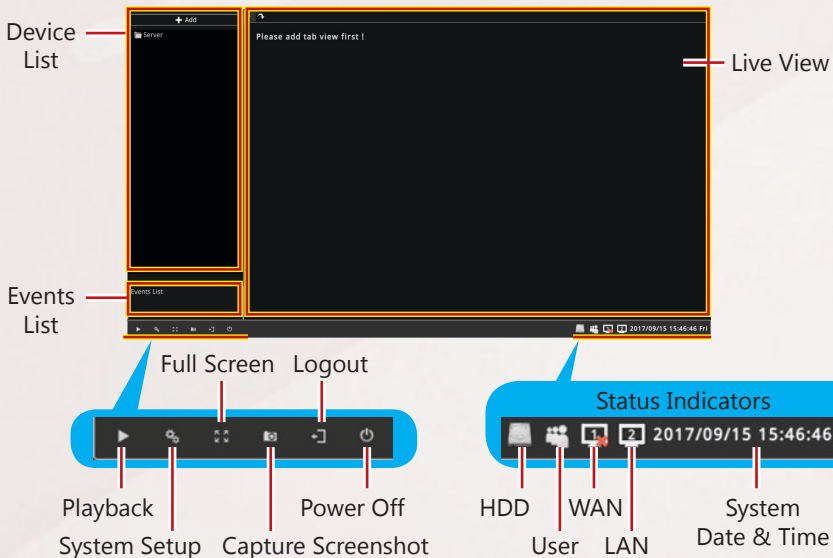
2. On the **Login** screen, using the on-screen keyboard, type the **Account** and **Password**.

Account: admin
Password: 123456

"123456" is the default password of the administrator's user account. For security reasons, please remember to change it.

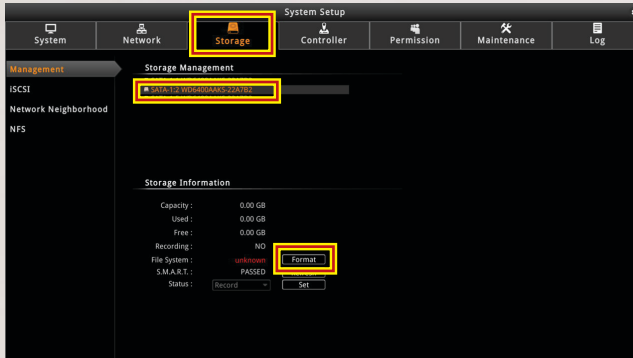


The User Interface



6 FORMAT THE HDD

1. Click the **System Setup** icon on the **Live View** screen.
2. Click the **Storage > Management** page.
3. Select the hard disk to format, then click **Format**.
4. Repeat the above steps to format the other disk, and then click **OK**.

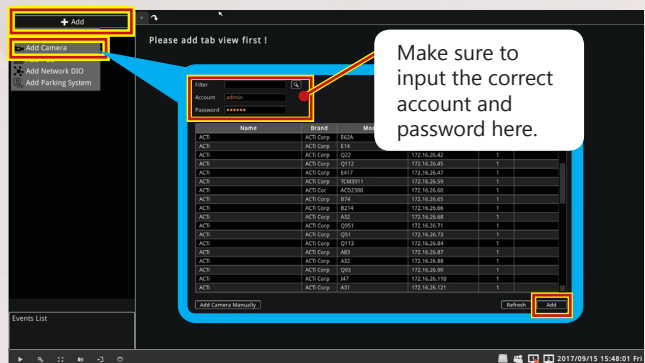


7 ADD DEVICES

1. On the **Live View** screen, click **Add**.
2. Click **Add Camera** from the pop-up menu.

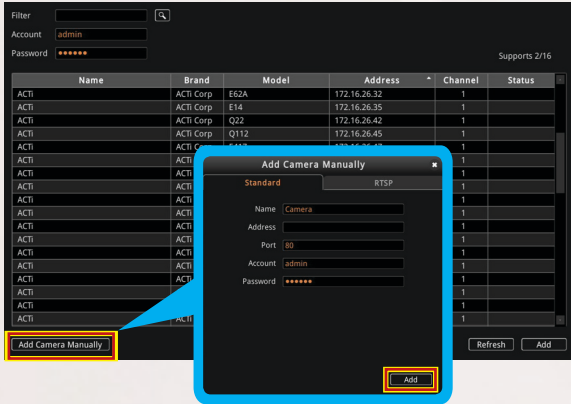
Or, click other network devices to add them in the ENR. You may also group devices by creating a group. However, for this quick installation guide, we will only cover adding cameras in general.

3. Click a model to select the camera. The text of the selected camera will turn orange.
4. Repeat the above step to add more cameras.
5. Click **Add** to complete.




Add Camera Manually

If you are adding cameras located in another network, click **Add Camera Manually**. Fill in the **IP address**, **HTTP Port**, **Account** and **Password**. Then click **Add**. Or, use the **RTSP** page for RTP protocol.

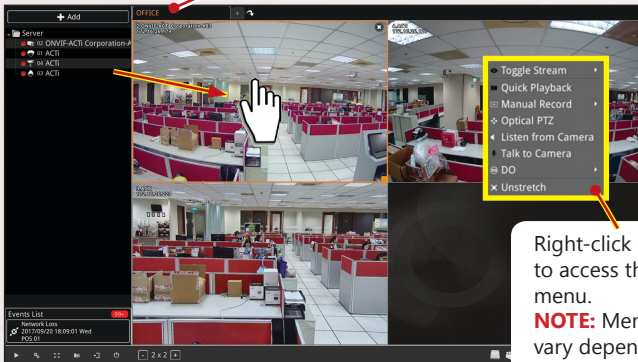


8 CHECK LIVE VIEW

After adding the cameras, the models are listed on the left panel of the **Live View** screen.

1. Create a tab view on the right panel, click .
2. Drag a model to the Live View screen.

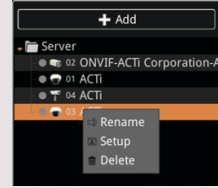
Double-click the page tab to rename it.



9 MANAGE DEVICES

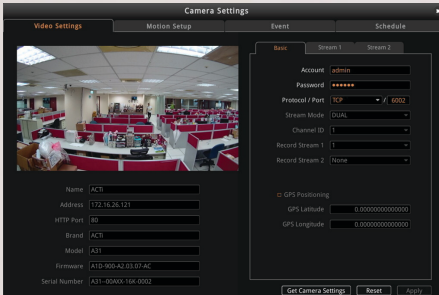
Managing the devices can be done from the **Live View** screen. Right-click on the device model from the left panel, then click to:

- **Rename** the device name on the list
- **Delete** the device from the list
- **Setup** the camera settings (see below)



Camera Settings

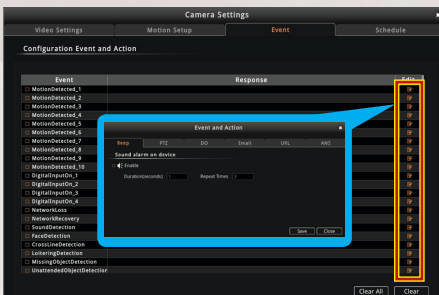
From the **Camera Settings** screen, click the corresponding page tab to configure video settings, set up motion detection, event and schedule recordings.



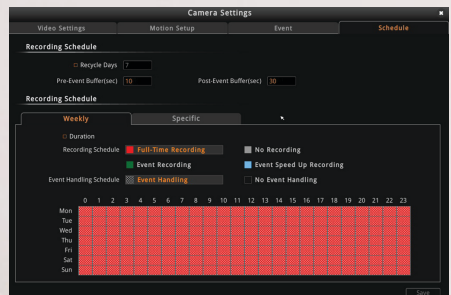
To modify the camera settings, click **Get Camera Settings**. Modify as needed, then click **Apply**.



- To configure motion setup, click **Setup**.
- To resize the detection area, drag the box on the lower right corner of the area.




To set the event trigger, double-click the **Edit** icon.



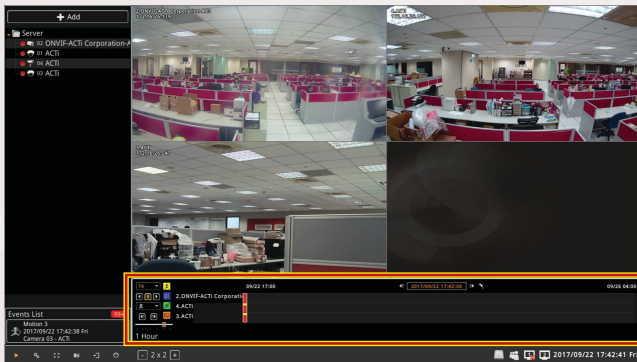
To configure the recording schedule, select a recording or no event handling schedule, then mark the calendar and then click **Apply**.

10 CHECK RECORDINGS

On the Live View screen, click the **Playback**  icon on the bottom right corner to enter the **Playback** screen.



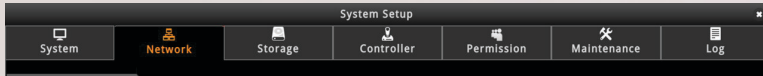
On the time bar, drag the current-time indicator to your desired position, and then click the **Playback** icon.



10 SYSTEM SETUP

Administrators can configure the ENR system setup.

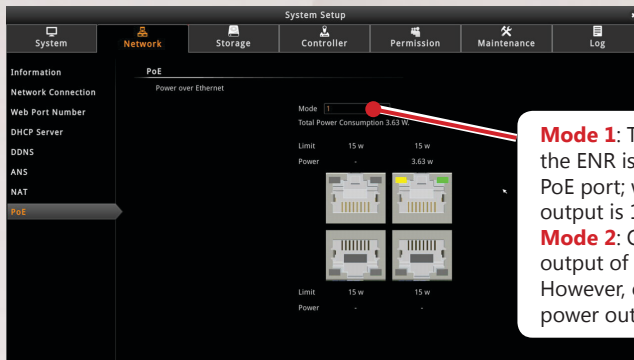
1. On the **Live View** screen, click the **Setup** icon on the bottom left corner.
2. On the Setup screen, click a menu page tab to access the settings:



- **System:** Includes system information, date and time, email settings, etc.
- **Network:** Includes network related configurations.
- **Storage:** Manages the storage settings of the ENR.
- **Maintenance:** Includes firmware upgrade and station management system.
- **Permission:** Includes users permission setup.
- **Log:** Lists the system log of the ENR.
- **Joystick:** Includes joystick configuration.

For PoE models

Configure the PoE ports individually in **Network > PoE**.



Mode 1: The total power budget of the ENR is equally divided into each PoE port; where the maximum power output is 15.4W per port.

Mode 2: One port can have high power output of 30W and other ports, 15.4W. However, one port will not have any power output.

WARRANTY CARD

This product is under warranty from the date of the original purchase ("Warranty Period").

For more information, please visit our website
<http://www.acti.com/warranty>



Due to continuous product improvements, some contents may have changed from the time this documentation was printed. Download the latest documentation, which shall prevail over the printed version provided in the package, from <http://www.acti.com/downloadcenter>.

V20180130