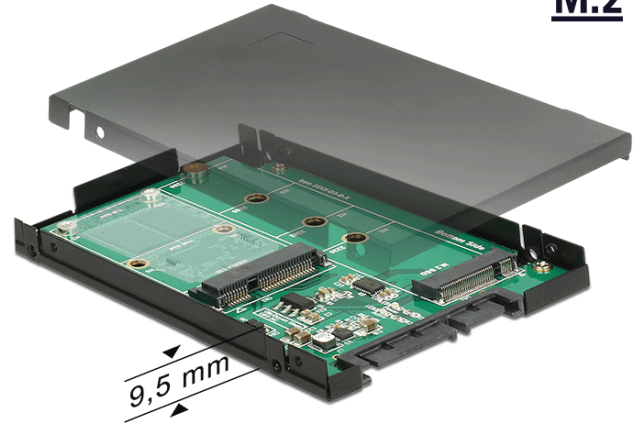


Delock 2.5" Converter SATA 22 pin > 1 x M.2 key B + 1 x mSATA - 9.5 mm

Description

This converter by Delock enables the connection of an M.2 SATA SSD in 2280, 2260, 2242 and 2230 format or an mSATA module in half size or full size format. If both slots are occupied, only the M.2 SSD can be used. The converter can be installed into the system through the SATA 22 pin interface.



Specification

- Connectors:
 - 1 x SATA 6 Gb/s 22 pin plug >
 - 1 x 67 pin M.2 key B slot
 - 1 x mSATA slot (half size / full size)
- Interface: SATA
- Form factor: 2.5"
- Supports M.2 modules in format 2280, 2260, 2242 and 2230 with key B or key B+M based on SATA
- Maximum height of the components on the module: 1.35 mm, application of double-sided assembled modules supported
- LED indicator
- Maximum power for modules: 3 A
- Short circuit protection, over heating protection
- ESD protection up to 2 kV
- Dimensions (LxWxH): ca. 100 x 70 x 9.5 mm

System requirements

- Windows 7/7-64/8.1/8.1-64/10/10-64, Linux Kernel 3.20
- A free SATA 22 pin interface

Package content

- Converter with 2.5" enclosure
- Mounting material
- User manual

Item No. 62866

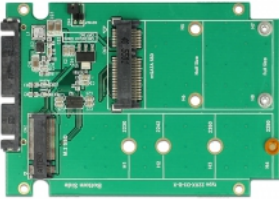
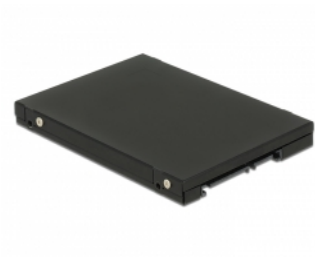
EAN: 4043619628667

Country of origin: Taiwan, Republic of China

Package: Retail Box



Images



General

Form factor:	2.5"
Supported operating system:	Linux ex Kernel 3.2 Windows 7 32-bit Windows 7 64-bit Windows 8.1 32-bit Windows 8.1 64-bit Windows 10 32-bit Windows 10 64-bit
Slot:	SATA
Supported module:	M.2 modules in format 2280, 2260, 2242 and 2230 with key B or key B+M based on SATA
Maximum height of the components on the module:	1.35 mm application of double-sided assembled modules supported
Protection:	ESD (Electrostatic Discharge) Short circuit protection Overheating protection

Interface

connector 1:	1 x SATA 6 Gb/s 22 pin plug
connector 2:	1 x 67 pin M.2 key B slot
connector 3:	1 x mSATA slot (half size / full size)

Physical characteristics

Length:	100 mm
Width:	70 mm
Height:	9.5 mm