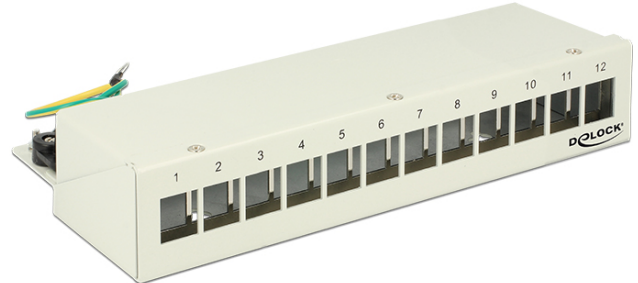


Delock Keystone Desktop Patch Panel 12 Port grey

Description

This patch panel by Delock can be used as a junction box on the wall or in enclosures. Additionally, clips for DIN rail mounting are included. With its standardized dimensions, it is suitable for easy snap-in mounting of twelve Keystone modules.



Note

Due to the narrow design only keystone modules up to max. 17.2 mm width can be used.

Specification

- 12 Keystone ports 19.2 x 14.9 mm
- Cable routing 180°
- Shielded
- Metal housing
- Colour: light grey RAL 7035
- Dimensions (WxHxD): ca. 221 x 44.5 x 112.5 mm

Package content

- Keystone Patch Panel
- 2 DIN-rail clips
- 2 screws
- 12 cable ties

Item No. 43335

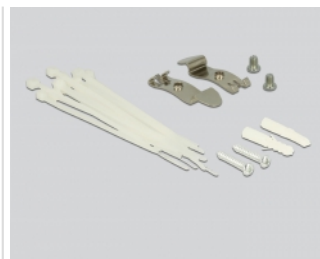
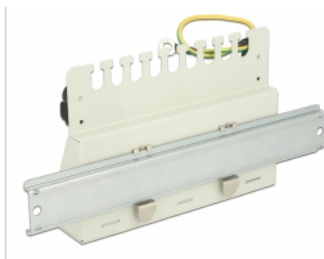
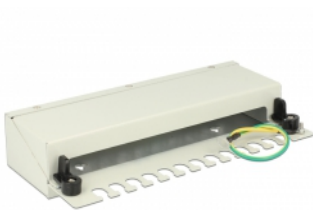
EAN: 4043619433353

Country of origin: China

Package: White Box



Images



General	
Mounting type:	wallmount DIN rail
Technical characteristics	
Shielding:	shielded
Physical characteristics	
Housing colour:	light grey
Housing:	metal
Depth:	112.5 mm
Width:	221 mm
Height:	44.5 mm