



# APC MGE Galaxy 3500 15kVA 400V uninterruptible power supply (UPS) 12000 W

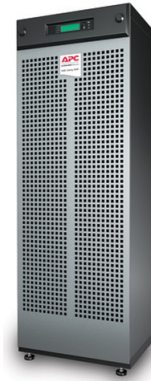
Brand : APC

Product code: G35T15KH4B4S

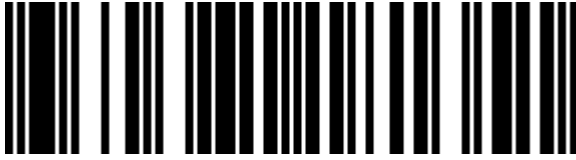
Product name : MGE Galaxy 3500 15kVA 400V

MGE Galaxy 3500 15kVA 400V with 4 Battery Modules, Start-up 5X8

APC MGE Galaxy 3500 15kVA 400V. Output power capacity: 15 kVA, Output power: 12000 W, Input frequency: 40/70 Hz. Battery technology: Sealed Lead Acid (VRLA), Battery recharge time: 5 h. Product colour: Black, Certification: CE,EN 50091-2,EN/IEC 62040-3,EN/IEC 62040-1-1,IEC 61000-3-2,IEC 61000-3-3,ISO 14001,ISO.... Weight: 627 kg, Package weight: 658 kg. Battery type: VRLA, Output connections: 1 x 4-wire (3PH + G) 1 x 5-wire (3PH + N + G) 1 x Screw Terminals, Input connection type: 5-wire (3PH + N + G)



Features		Operational conditions	
Output power capacity *	15 kVA	Operating relative humidity (H-H)	0 - 95%
Output power *	12000 W	Storage relative humidity (H-H)	0 - 95%
Input frequency *	40/70 Hz	Operating altitude	0 - 999.9 m
Maximum current	20 A	Non-operating altitude	0 - 15000 m
Emergency Power Off (EPO)	✓	Weight & dimensions	
Noise level	51.3 dB	Weight	627 kg
Battery		Package weight	658 kg
Battery technology	Sealed Lead Acid (VRLA)	Logistics data	
Battery recharge time	5 h	Harmonized System (HS) code	85078000
Replacement battery cartridge	4	Other features	
Design		Battery type	VRLA
Product colour *	Black	Output connections	1 x 4-wire (3PH + G) 1 x 5-wire (3PH + N + G) 1 x Screw Terminals
Certification	CE,EN 50091-2,EN/IEC 62040-3,EN/IEC 62040-1-1,IEC 61000-3-2,IEC 61000-3-3,ISO 14001,ISO 9001,VFI-SS-111	Input connection type	5-wire (3PH + N + G)
Operational conditions		Dimensions (WxDxH)	523 x 838 x 1491 mm
Operating temperature (T-T)	0 - 40 °C	Output voltage note	+/- 5%
Storage temperature (T-T)	-15 - 45 °C	Package dimensions (WxDxH)	650 x 1062 x 1643 mm



7330381181351

Disclaimer. The information published here (the "Information") is based on sources that can be considered reliable, typically the manufacturer, but this Information is provided "AS IS" and without guarantee of correctness or completeness. The Information is only indicative and can be changed at any time without notification. No rights can be based on the Information. Suppliers or aggregators of this Information do not accept any liability with regard to the content of (web)pages and other documents, including its Information. The publisher of the Information can not be held liable for the content of 3rd party websites that are linking this Information or are linked to from this Information. You as the User of the Information are solely responsible for the choice and usage of this Information. You are not entitled to transfer, copy or otherwise multiply or distribute the Information. You are obliged to follow the directions of the copyright owner(s) with regard to the use of the Information. Exclusively Dutch law is applicable. With regard to price and stock data on the site, the publisher followed a number of starting points, which are not necessarily relevant for your private or business circumstances. Therefore, the price and stock data are only indicative and are subject to changes. You are personally responsible for the way you use and apply this information. As a user of the Information or sites or documents in which this Information is included, you will adhere to standard fair use including avoidance of spamming, ripping, intellectual-property violations, privacy violations, and any other illegal activity.

Publication date: 23-DEC-2024. Prints or copies of Information are only valid on the printed Publication date