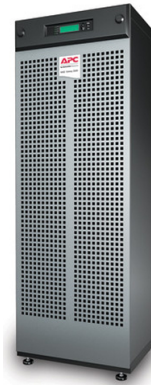




APC MGE Galaxy 3500 40kVA 400V uninterruptible power supply (UPS) 32000 W



Brand : APC

Product code: G35T40KH4B4S

Product name : MGE Galaxy 3500 40kVA 400V

MGE Galaxy 3500 40kVA 400V with 4 Battery Modules, Start-up 5X8

APC MGE Galaxy 3500 40kVA 400V. Output power capacity: 40 kVA, Output power: 32000 W, Input frequency: 40/70 Hz. Battery technology: Sealed Lead Acid (VRLA), Battery recharge time: 5 h. Product colour: Black, Certification: CE,EN 50091-2,EN/IEC 62040-3,EN/IEC 62040-1-1,IEC 61000-3-2,IEC 61000-3-3,ISO 14001,ISO.... Weight: 662 kg, Package weight: 692 kg. Battery type: VRLA, Output connections: 1 x 4-wire (3PH + G) 1 x 5-wire (3PH + N + G) 1 x Screw Terminals, Input connection type: 5-wire (3PH + N + G)

Features		Operational conditions	
Output power capacity *	40 kVA	Storage temperature (T-T)	-15 - 45 °C
Output power *	32000 W	Operating relative humidity (H-H)	0 - 95%
Input frequency *	40/70 Hz	Storage relative humidity (H-H)	0 - 95%
Maximum current	54 A	Operating altitude	0 - 999.9 m
Emergency Power Off (EPO)	✓	Non-operating altitude	0 - 15000 m
Noise level	55 dB	Weight & dimensions	
Battery		Weight	662 kg
Battery technology	Sealed Lead Acid (VRLA)	Package weight	692 kg
Battery recharge time	5 h	Other features	
Replacement battery cartridge	4	Battery type	VRLA
Design		Output connections	1 x 4-wire (3PH + G) 1 x 5-wire (3PH + N + G) 1 x Screw Terminals
Product colour *	Black	Input connection type	5-wire (3PH + N + G)
Certification	CE,EN 50091-2,EN/IEC 62040-3,EN/IEC 62040-1-1,IEC 61000-3-2,IEC 61000-3-3,ISO 14001,ISO 9001,VFI-SS-111	Dimensions (WxDxH)	523 x 838 x 1491 mm
		Output voltage note	+/-1%, +/- 5%
		Package dimensions (WxDxH)	650 x 1062 x 1643 mm
Operational conditions			
Operating temperature (T-T)	0 - 40 °C		



7330381479694



0731304275008



731304275008

Disclaimer. The information published here (the "Information") is based on sources that can be considered reliable, typically the manufacturer, but this Information is provided "AS IS" and without guarantee of correctness or completeness. The Information is only indicative and can be changed at any time without notification. No rights can be based on the Information. Suppliers or aggregators of this Information do not accept any liability with regard to the content of (web)pages and other documents, including its Information. The publisher of the Information can not be held liable for the content of 3rd party websites that are linking this Information or are linked to from this Information. You as the User of the Information are solely responsible for the choice and usage of this Information. You are not entitled to transfer, copy or otherwise multiply or distribute the Information. You are obliged to follow the directions of the copyright owner(s) with regard to the use of the Information. Exclusively Dutch law is applicable. With regard to price and stock data on the site, the publisher followed a number of starting points, which are not necessarily relevant for your private or business circumstances. Therefore, the price and stock data are only indicative and are subject to changes. You are personally responsible for the way you use and apply this information. As a user of the Information or sites or documents in which this Information is included, you will adhere to standard fair use including avoidance of spamming, ripping, intellectual-property violations, privacy violations, and any other illegal activity.